

Rittal – The System.

Faster – better – everywhere.

KL Terminal Boxes **Stainless steel – KL** **1523.010**

Date : May 24, 2018

ENCLOSURES

POWER DISTRIBUTION

CLIMATE CONTROL

IT INFRASTRUCTURE

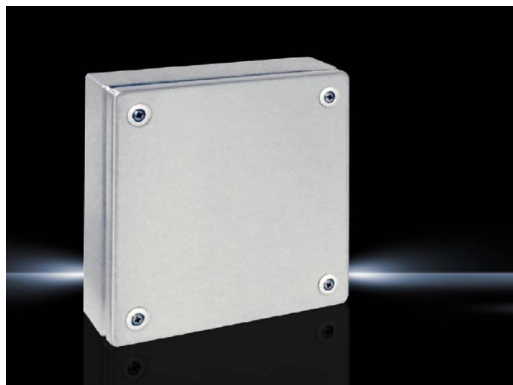
SOFTWARE & SERVICES

FRIEDHELM LOH GROUP



KL Terminal Boxes Stainless steel – KL 1523.010

created: 24.05.2018 build on www.rittal.com/us-en



Product description

Material: Housing: Stainless steel 1.4301 (AISI 304)
Cover: Stainless steel 1.4301 (AISI 304), all-round foamed-in PU seal

Surface finish: Housing and cover: Brushed, grain 180

**Protection category
IP to IEC 60 529:** IP 66

**Protection category
NEMA:** NEMA 4X

IK code: IK08

Supply includes: Housing with cover
Quick-release fasteners including plastic bushings

Base material: Stainless steel

Product features

Dimensions: Height: 200 mm (7.9 ")
Width: 200 mm (7.9 ")
Depth: 80 mm (3.1 ")

Material thickness:: Housing: 1.25 mm (0.05 ")
Cover: 1.25 mm (0.05 ")

No. of locks: 4

Packaging unit: 1 pc(s).

Weight/packaging unit:	1.8 kg (4 lb.)
EAN:	4028177008489
Customs tariff number:	85389099
ETIM 6.0:	EC002713
ETIM 5.0:	EC002713
eCl@ss 8.0/8.1:	27180101
eCl@ss 7.0/7.1:	27180101
eCl@ss 6.0/6.1:	27180101
eCl@ss 5.1/5.1.4:	27180102
Product description (long):	KL Terminal box, WHD: 200x200x80 mm, Stainless steel 1.4301, without mounting plate, with cover, without gland plate

Approvals

Approvals:	Bureau Veritas CSA DNV-GL Lloyds Register of Shipping Russian Maritime Register of Shipping TÜV UL + C-UL
Certificates:	EAC IK-Code Protection category
Declarations:	Declaration of conformity