

# Rittal – The System.

Faster – better – everywhere.

► **Cross member for TS,  
SE, CM, TP, PC, IW,  
Blue e+ chiller – TS  
8601.680**

Date : May 29, 2018

ENCLOSURES

POWER DISTRIBUTION

CLIMATE CONTROL

IT INFRASTRUCTURE

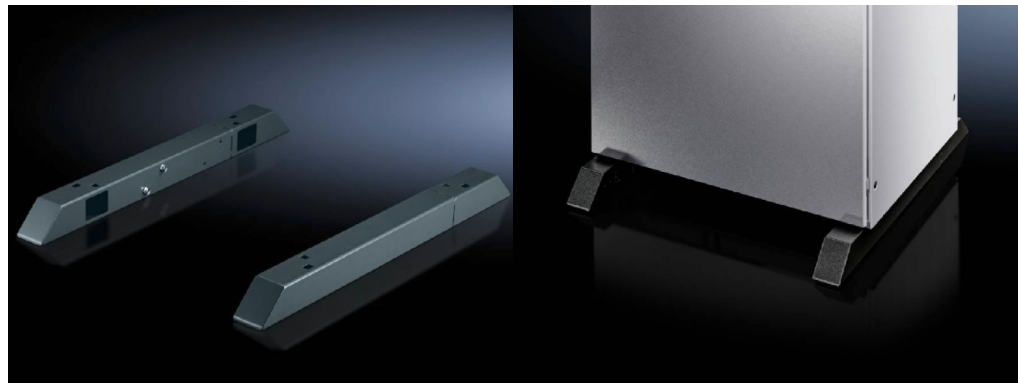
SOFTWARE & SERVICES

FRIEDHELM LOH GROUP



# Cross member for TS, SE, CM, TP, PC, IW, Blue e+ chiller – TS 8601.680

created: 29.05.2018 build on [www.rittal.com/us-en](http://www.rittal.com/us-en)



## Product description

**Description:** To increase stability, the cross members project 138 mm beyond the enclosure base frame at the front and rear. The rear part can be extended and re-screwed for deeper enclosures.

**Benefits:** To increase stability  
Adjustable to the housing depth

**Material:** Carbon steel

**Surface finish:** Spray-finished

**Color:** RAL 7015

**Supply includes:** 1 cross beam, left  
1 cross beam, right

**Note:** Ensure sufficient stability to prevent the enclosure from tipping over!

## Product features

**Suitable for:** Enclosure type: TS 8  
Enclosure type: SE  
Enclosure type: CM  
Enclosure type: TP  
Enclosure type: PC  
Enclosure type: IW  
Depth: 600 mm (24 ")  
Depth: 800 mm (31 ")

<b>Dimensions:</b>	Height: 70 mm (2.8 ")
<b>Installation options:</b>	For screw-fastening to base and enclosure with side, front and rear mounting holes The castors and leveling feet may be secured to the M12 welded nuts For Blue e+ chillers, the cross-beam can be used as a base/plinth component
<b>Packaging unit:</b>	2 pc(s).
<b>Weight/packaging unit:</b>	10.4 kg (22.9 lb.)
<b>EAN:</b>	4028177382640
<b>Customs tariff number:</b>	94039010
<b>ETIM 6.0:</b>	EC000721
<b>ETIM 5.0:</b>	EC000721
<b>eCl@ss 8.0/8.1:</b>	27182003
<b>eCl@ss 7.0/7.1:</b>	27182003
<b>eCl@ss 6.0/6.1:</b>	27182003
<b>eCl@ss 5.1/5.1.4:</b>	27182092
<b>Product description (long):</b>	TS Cross member, for TS, SE, CM, TP, PC, IW, for D: 600/800 mm
<b>Approvals</b>	
<b>Certificates:</b>	EAC