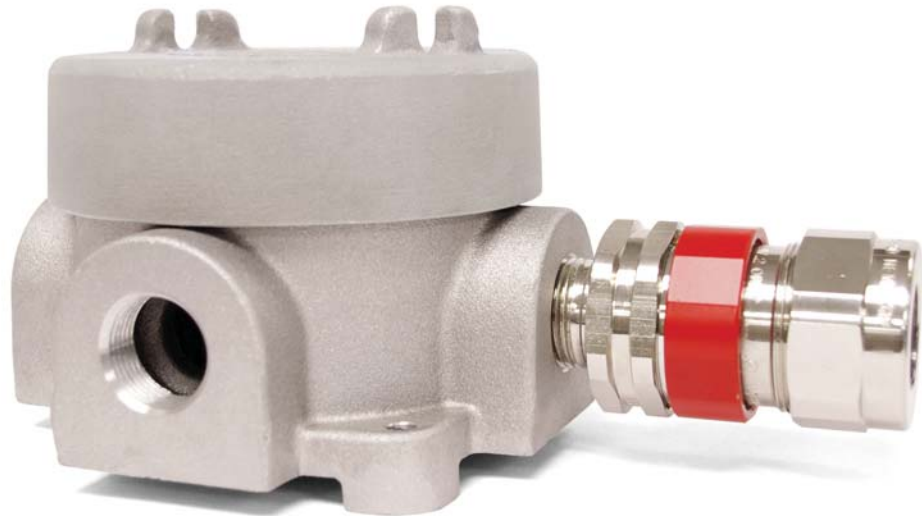


NEW PRODUCT
Eaton's Crouse-Hinds Business



GRUE Series Condulet® Cable Outlet Box

Eaton's Crouse-Hinds GRUE Series Outlet Box provides safe and reliable cable termination in hazardous areas. In surface applications, the elevated mounting feet enable hubs to accept cable connector termination and removal.



Applications:

The GRUE hazardous outlet box is intended for use within hazardous areas to:

- Terminate cable connectors
- Interconnect lengths of conduit
- Protect conductors in threaded rigid conduit
- Act as pull and splice boxes
- Change conduit direction
- Provide access to conductors for maintenance and future system changes

Certifications and Compliances:

NEC/CEC:

- Class I, Divisions 1 & 2, Groups B, C, D
- Class II, Division 1, Groups E, F, G
- Class II, Division 2, Groups F, G
- Class III
- UL Standard: 1203
- ANSI Standard: C33.27
- CSA Standard: C22.2 No. 30
- NEMA 3, 4

Crouse-Hinds
by **EAT•N**

GRUE Series Condulet® Cable Outlet Box

Design Features and Benefits:

- Five threaded hub locations; includes three close-up plugs
- Tapered threaded hubs to provide ground continuity
- Green ground screw
- Smooth, rounded integral bushing in each hub protects conductor installation
- External threaded body and jar style cover provides additional wiring room
- Cover threads are 16 pitch
- Cast ears on cover to permit easy removal and tightening
- Elevated mounting feet enable hubs to accept cable connector termination and removal when surface mounted
- No stand-offs required for mounting feet when installing larger potted barrier glands
- Neoprene o-ring standard to meet NEMA 4 requirements
- Copper-free aluminum body and cover provide resistance to corrosive atmospheres
- Surface cover furnished with box
- Sealing cover available with 3/4" hub

Standard Material:

- Body and cover - copper-free aluminum

Standard Finish:

- Aluminum - natural

Size Ranges:

- Hub - 1/2" to 1"
- Cover opening - 5" diameter

Options:

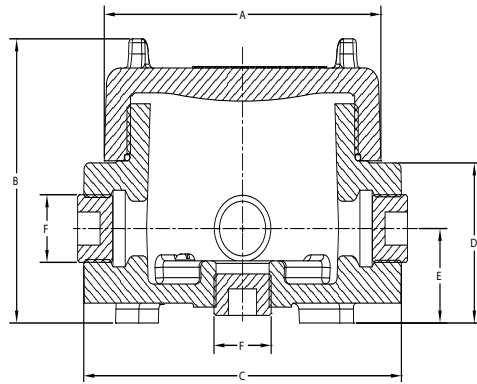
- | | |
|---|----------------------------|
| • To order assembled with sealing cover | Suffix
SC |
| • 1 row, 4 terminal blocks | TB14* |
| • 1 row, 6 terminal blocks | TB16* |
| • 1 row, 8 terminal blocks | TB18* |
| • 1 row, 4 terminal blocks | DIN14† |
| • 1 row, 6 terminal blocks | DIN16† |
| • 1 row, 8 terminal blocks | DIN18† |

Replacement Parts:

- 5" diameter sealing cover **GRUE092**
- 5" diameter blank replacement cover **GRUE09**

*Products provide a 30 amp, 300V Phoenix G5/4 or G5/6 terminal block for wire size #10 AWG, directly mounted to a mounting strap.

†Products provide a 24 amp, 250V Phoenix MBK5 type terminal block for wire size #24 to #12 AWG mounted on a DIN rail.



Ordering Information and Dimensions:

Catalog Number	Dimension A	Dimension B	Dimension C	Dimension D	Dimension E	Dimension F
GRUE19	4 15/16	4 9/32	5 21/32	2 13/32	1 7/16	1/2" NPT
GRUE29	4 15/16	4 9/32	5 21/32	2 13/32	1 7/16	3/4" NPT
GRUE39	4 15/16	4 9/32	5 21/32	2 13/32	1 1/4	1" NPT