

RIGID • IMC

Malleable Iron Insulated Conduit Bushings 150° for Threaded Rigid Conduit • IMC



Features

- The plastic liner won't chip, crack, swell or shrink. It resists corrosion, chemicals and temperature extremes
- RoHS compliant

Standard Materials

Body - Malleable iron
Insuliner - ULTEM1000 rated at 150° C

Standard Finish

Body - Zinc plated

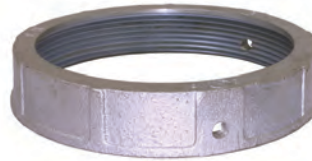
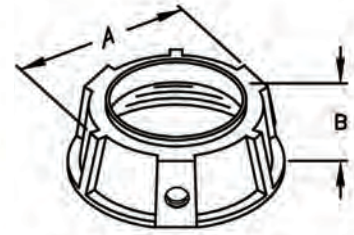
Applicable Third Party Standards

- UL Standard: 514B
- Fed. Spec. W-F-408E
- NEMA: FB-1
- UL Listed File # E207875

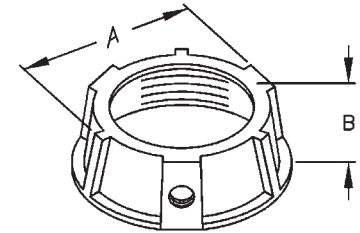
U.S. Patent No. 6.808.181



Insulated



Non-Insulated



CATALOG NUMBER	TRADE SIZE	DIM A	DIM B	INNER PACK	MASTER PACK	WEIGHT PER C
Malleable Iron Insulated Conduit Bushings 150° for Threaded Rigid Conduit and IMC						
BRC-50KON	1/2"	1.063	0.688	100	500	5.5
BRC-75KON	3/4"	1.250	0.688	50	250	8.8
BRC-100KON	1"	1.625	0.750	50	250	13.2
BRC-125KON	1-1/4"	2.000	0.813	25	125	16.5
BRC-150KON	1-1/2"	2.313	0.813	25	125	20.9
BRC-200KON	2"	2.750	0.875	10	50	25.4
BRC-250KON	2-1/2"	3.313	1.000	–	10	50.7
BRC-300KON	3"	4.000	1.000	–	10	66.1
BRC-350KON	3-1/2"	4.375	1.063	–	10	71.7
BRC-400KON	4"	5.063	1.125	–	10	102.5
BRC-500KON	5"	6.188	1.188	–	5	146.6
BRC-600KON	6"	7.188	1.188	–	5	184.1
Malleable Iron Non-Insulated Conduit Bushings for Threaded Rigid Conduit and IMC						
BRCN-50KON	1/2"	1.063	0.625	100	500	5.5
BRCN-75KON	3/4"	1.250	0.625	50	250	8.7
BRCN-100KON	1"	1.625	0.688	50	250	13.1
BRCN-125KON	1-1/4"	2.000	0.750	25	125	16.4
BRCN-150KON	1-1/2"	2.313	0.813	25	125	20.7
BRCN-200KON	2"	2.750	0.875	10	50	25.2
BRCN-250KON	2-1/2"	3.313	1.000	–	10	50.3
BRCN-300KON	3"	4.000	1.000	–	10	65.6
BRCN-350KON	3-1/2"	4.375	1.063	–	10	71.2
BRCN-400KON	4"	5.063	1.125	–	10	101.7
BRCN-500KON	5"	6.125	1.188	–	5	145.5
BRCN-600KON	6"	7.188	1.188	–	5	182.7

RIGID • IMC

Malleable Iron Conduit Bushings 150° with Aluminum Lugs for Threaded Rigid Conduit • IMC



Features

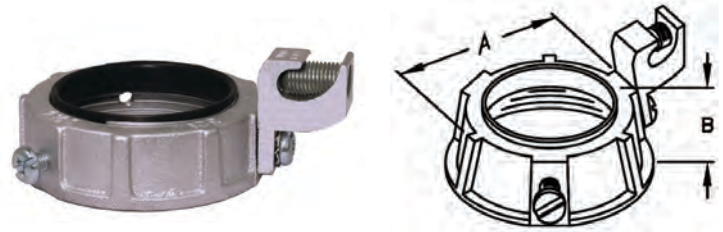
- The plastic liner won't chip, crack, swell or shrink. It resists corrosion, chemicals and temperature extremes
- One set screw provided with each fitting locks bushing in any desired position
- UL Listed for use with copper or aluminum grounding conductors
- RoHS compliant

Standard Materials

Body - Malleable iron
 Lug - Aluminum
 Insuliner - ULTEM1000 rated at 150° C
 Clamping screw - Steel
 Set screw - Steel

Standard Finish

Body - Zinc plated
 Lug - Aluminum
 Clamping Screw - Zinc plated
 Set Screw - Zinc plated



Applicable Third Party Standards

- UL Standard: 467
- UL Standard: 514B
- Fed. Spec. W-F-408E
- NEMA: FB-1
- UL Listed File # E212551

U.S. Patent No. 6.808.181

CATALOG NUMBER	TRADE SIZE	LUG SIZE	DIM A	DIM B	INNER PACK	MASTER PACK	WEIGHT PER C
BRC-50-1AKON	1/2"	4-14	1.063	0.688	100	500	7.4
BRC-75-1AKON	3/4"	4-14	1.25	0.688	50	250	10.7
BRC-100-1AKON	1"	4-14	1.625	0.75	50	250	15.1
BRC-125-1AKON	1-1/4"	4-14	2	0.813	25	125	18.4
BRC-125-2AKON	1-1/4"	1/0-8	2	0.813	25	125	23.1
BRC-150-1AKON	1-1/2"	4-14	2.313	0.813	25	125	22.8
BRC-150-2AKON	1-1/2"	1/0-8	2.313	0.813	25	125	27.5
BRC-200-1AKON	2"	4-14	2.75	0.875	10	50	27.3
BRC-200-2AKON	2"	1/0-8	2.75	0.875	10	50	32.0
BRC-250-2AKON	2-1/2"	1/0-8	3.313	1	—	10	57.3
BRC-250-3AKON	2-1/2"	3/0-6	3.313	1	—	10	67.1
BRC-250-4AKON	2-1/2"	250MCM-6	3.313	1	—	10	69.5
BRC-300-2AKON	3"	1/0-8	4	1	—	10	72.7
BRC-300-3AKON	3"	3/0-6	4	1	—	10	82.5
BRC-300-4AKON	3"	250MCM-6	4	1	—	10	84.9
BRC-350-3AKON	3-1/2"	3/0-6	4.375	1.063	—	10	88.1
BRC-350-4AKON	3-1/2"	250MCM-6	4.375	1.063	—	10	89.9
BRC-400-3AKON	4"	3/0-6	5.063	1.125	—	10	118.9
BRC-400-4AKON	4"	250MCM-6	5.063	1.125	—	10	121.3
BRC-500-3AKON	5"	3/0-6	6.125	1.188	—	5	163.0
BRC-500-4AKON	5"	250MCM-6	6.125	1.188	—	5	165.4
BRC-600-3AKON	6"	3/0-6	7.188	1.188	—	5	200.5
BRC-600-4AKON	6"	250MCM-6	7.188	1.188	—	5	202.9

RIGID • IMC

Malleable Iron Conduit Bushings 150° with Copper Lug for Threaded Rigid Conduit • IMC



Features

- The plastic liner won't chip, crack, swell or shrink. It resists corrosion, chemicals and temperature extremes
- One set screw provided with each fitting locks bushing in any desired position
- UL Listed for use with copper or aluminum grounding conductors
- RoHS compliant

Standard Materials

Body - Malleable iron

Lug - Copper

Insuliner - ULTEM1000 rated at 150° C

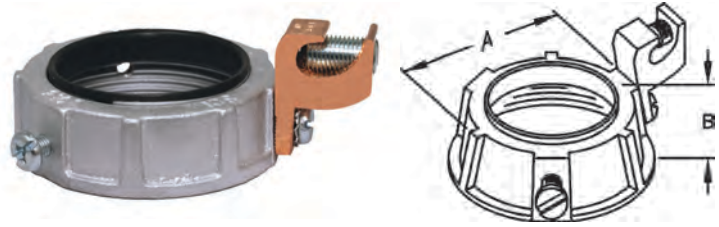
Clamping screw - Steel

Set screw - Steel

Standard Finish

Body - Zinc plated

Set Screw - Zinc plated



Applicable Third Party Standards

- UL Standard: 467
- UL Standard: 514B
- Fed. Spec. W-F-408E
- NEMA: FB-1
- UL Listed File # E212551

U.S. Patent No. 6.808.181

CATALOG NUMBER	TRADE SIZE	LUG SIZE	DIM A	DIM B	INNER PACK	MASTER PACK	WEIGHT PER C
BRC-50-1CKON	1/2"	4-14	1.063	0.688	100	500	9.9
BRC-75-1CKON	3/4"	4-14	1.250	0.688	50	250	13.2
BRC-100-1CKON	1"	4-14	1.625	0.750	50	250	17.6
BRC-125-1CKON	1-1/4"	4-14	2.000	0.813	25	125	20.9
BRC-125-2CKON	1-1/4"	1/0-8	2.000	0.813	25	125	32.4
BRC-150-1CKON	1-1/2"	4-14	2.313	0.813	25	125	25.3
BRC-150-2CKON	1-1/2"	1/0-8	2.313	0.813	25	125	36.8
BRC-200-1CKON	2"	4-14	2.750	0.875	10	50	29.8
BRC-200-2CKON	2"	1/0-8	2.750	0.875	10	50	41.3
BRC-250-2CKON	2-1/2"	1/0-8	3.313	1.000	–	10	66.5
BRC-250-3CKON	2-1/2"	3/0-6	3.313	1.000	–	10	90.7
BRC-250-4CKON	2-1/2"	250MCM-6	3.313	1.000	–	10	101.0
BRC-300-2CKON	3"	1/0-8	4.000	1.000	–	10	82.0
BRC-300-3CKON	3"	3/0-6	4.000	1.000	–	10	106.1
BRC-300-4CKON	3"	250MCM-6	4.000	1.000	–	10	116.4
BRC-350-3CKON	3-1/2"	3/0-6	4.375	1.063	–	10	111.7
BRC-350-4CKON	3-1/2"	250MCM-6	4.375	1.063	–	10	121.0
BRC-400-3CKON	4"	3/0-6	5.063	1.125	–	10	142.5
BRC-400-4CKON	4"	250MCM-6	5.063	1.125	–	10	152.8
BRC-500-3CKON	5"	3/0-6	6.125	1.188	–	5	186.6
BRC-500-4CKON	5"	250MCM-6	6.125	1.188	–	5	196.9
BRC-600-3CKON	6"	3/0-6	7.188	1.188	–	5	224.1
BRC-600-4CKON	6"	250MCM-6	7.188	1.188	–	5	234.4