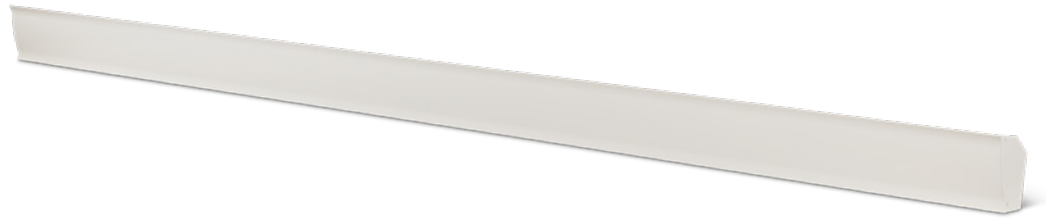


# SCR | RADIANCE™

## COVE HEATER



## INNOVATION AT THE HEIGHT OF YOUR EXPECTATIONS

The Radiance cove heater is one of the most efficient heating systems available today. Mounted near the ceiling, the Radiance directs heat downward across the room, without being blocked by furniture and other objects. Radiant heat warms people in the room directly, creating comfortable conditions similar to the sun. The Radiance also warms all inanimate objects in its path; these objects absorb the heat and in turn act as a “heat reserve,” initiating a convection-type flow of heated air that further helps maintain the desired room temperature.

**15% GREATER ENERGY PERFORMANCE COMPARED TO OTHER RADIANT HEATERS**

**WALL MOUNTED 2.5 IN. FROM THE CEILING – OUT OF REACH OF CHILDREN AND FREES UP SPACE**

**IDEAL FOR PEOPLE WITH ALLERGIES  
NO FORCED-AIR MOVEMENT**

**COMPACT AND LIGHTWEIGHT  
IDEAL FOR NEW CONSTRUCTIONS AND RETROFITS**

### IDEAL FOR:

main heat source for any room, above a window or patio door, living space, daycare center, school, playroom, locker room, spa, rooms with limited space

### COLOURS

- **standard:** soft white
- **Orora (optional):** anodized aluminum paint and black only

### FINISH

- front panel: high temperature, high emissivity paint coating for maximum thermal efficiency
- other parts: hybrid epoxy-polyester powder paint

### MANUFACTURING

- aluminum front panel
- 18-gauge steel cabinet and back box
- aluminum end covers
- 24-gauge stainless steel reflector
- full-length wireway
- designed and assembled for reduced noise from the expansion and contraction of metal during heating cycles

### ELEMENT

- tubular; stainless steel

### CONTROL

- wall thermostat (not included) – the use of an electronic thermostat is strongly recommended
- built-in single pole bimetal thermostat installed in the left or right junction box (optional)

### INSTALLATION

- wall mounted at a distance of 2.5 in. or more from the ceiling
- all flammable material must be 6 in. or more from the front of the unit

### WARRANTY

- five years

## ACCESSORIES

PRODUCT	DESCRIPTION
SCRSPSW	splice plate kit (for installing two units side by side)
SCRBTRSW*	single pole bimetal thermostat with right side end cover
SCRBTLSW*	single pole bimetal thermostat with left side end cover

\* Factory installed

# TECHNICAL SPECIFICATIONS

PRODUCT	POWER	VOLTAGE	LENGTH		WEIGHT	
			MM	IN.	KG	LB
CODE	WATTS	VOLTS				
SCR0451	450	120	860	34	2.9	6.4
SCR0458	450	208	860	34	2.9	6.4
SCR0452	450/338	240/208	860	34	2.9	6.4
SCR0453	450	347	860	34	2.9	6.4
SCR0601	600	120	1190	47	4.0	8.9
SCR0608	600	208	1190	47	4.0	8.9
SCR0602	600/450	240/208	1190	47	4.0	8.9
SCR0603	600	347	1190	47	4.0	8.9
SCR0751	750	120	1500	59	5.0	11.1
SCR0758	750	208	1500	59	5.0	11.1
SCR0752	750/563	240/208	1500	59	5.0	11.1
SCR0753	750	347	1500	59	5.0	11.1
SCR0756	750	600	1500	59	5.0	11.1
SCR0901	900	120	1800	71	5.9	13.0
SCR0908	900	208	1800	71	5.9	13.0
SCR0902	900/675	240/208	1800	71	5.9	13.0
SCR0903	900	347	1800	71	5.9	13.0
SCR0906	900	600	1800	71	5.9	13.0
SCR1051	1050	120	2110	83	7.1	15.7
SCR1058	1050	208	2110	83	7.1	15.7
SCR1052	1050/788	240/208	2110	83	7.1	15.7
SCR1053	1050	347	2110	83	7.1	15.7
SCR1056	1050	600	2110	83	7.1	15.7
SCR1201	1200	120	2390	94	8.1	17.8
SCR1208	1200	208	2390	94	8.1	17.8
SCR1202	1200/900	240/208	2390	94	8.1	17.8
SCR1203	1200	347	2390	94	8.1	17.8
SCR1206	1200	600	2390	94	8.1	17.8
SCR1508	1500	208	2690	106	9.1	20.1
SCR1502	1500/1125	240/208	2690	106	9.1	20.1
SCR1503	1500	347	2690	106	9.1	20.1
SCR1506	1500	600	2690	106	9.1	20.1

Add SW for soft white. Models also available in 277 V and 480 V.

## TECHNICAL DRAWINGS

