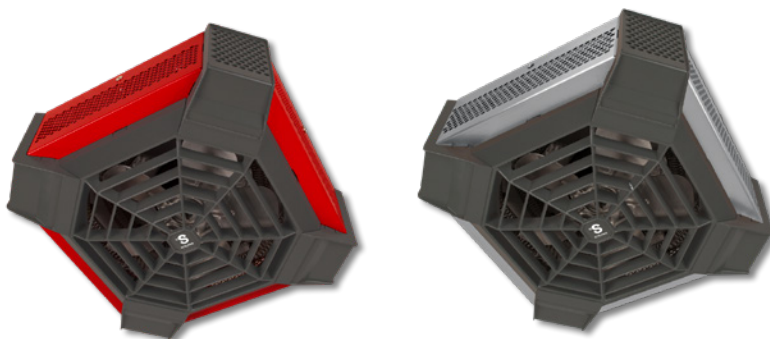


# SGH | SPIDER™

## CEILING FAN HEATER



SPIDER™



## GET CAUGHT UP IN ITS COMFORT!

This stylish ceiling fan heater will be the highlight of your garage! The SPIDER ceiling fan heater combines optimum performance, instant heat and a low noise level, all this in a distinctive design.

### INNOVATIVE AND UNIQUE DESIGN

### DESIGNED SPECIFICALLY FOR RESIDENTIAL GARAGES

### CEILING INSTALLATION FREES UP FLOOR AND WALL SPACE

### COLOURS

- **standard:** red
- **luxury finish:** stainless steel

### FINISH

- polyester powdercoat or stainless steel

### MANUFACTURING

- 22-gauge smooth steel housing
- quiet helicoidal fan
- thermal protection with automatic reset
- closed and permanently lubricated motor

### ELEMENT

- nichrome element producing instant heat

### CONTROL

- wall thermostat (not included) – the use of an electronic thermostat is strongly recommended

### INSTALLATION

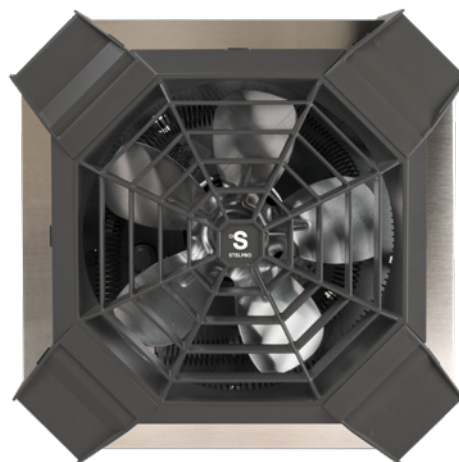
- ceiling surface mounted with bracket
- from adjacent walls at a minimum of 12 in. (305 mm)
- from floor at a minimum of 8 ft. (2.4 m) and a maximum of 10 ft. (3 m)

### WARRANTY

- five years

### IDEAL FOR:

garage, workshop



°STELPRO



FC\_SGH\_EN\_301018



## TECHNICAL SPECIFICATIONS

PRODUCT	POWER	VOLTAGE	COLOUR	HEAT RISE		WEIGHT	
CODE	WATTS	VOLTS		°C	°F	KG	LB
SGH4002R	4000/3000	240/208	RED	46	83	4.5	10
SGH4002SS	4000/3000	240/208	STAINLESS STEEL	46	83	4.5	10

## TECHNICAL DRAWINGS

