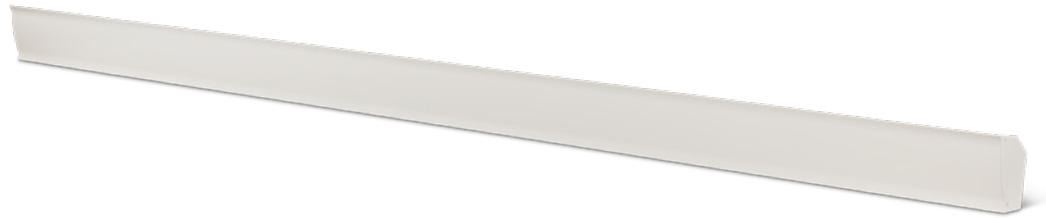


SCR | RADIANCE™

COVE HEATER



INNOVATION AT THE HEIGHT OF YOUR EXPECTATIONS

The Radiance cove heater is one of the most efficient heating systems available today. Mounted near the ceiling, the Radiance directs heat downward across the room, without being blocked by furniture and other objects. Radiant heat warms people in the room directly, creating comfortable conditions similar to the sun. The Radiance also warms all inanimate objects in its path; these objects absorb the heat and in turn act as a “heat reserve,” initiating a convection-type flow of heated air that further helps maintain the desired room temperature.

15% GREATER ENERGY PERFORMANCE COMPARED TO OTHER RADIANT HEATERS

WALL MOUNTED 2.5 IN. FROM THE CEILING – OUT OF REACH OF CHILDREN AND FREES UP SPACE

**IDEAL FOR PEOPLE WITH ALLERGIES
NO FORCED-AIR MOVEMENT**

**COMPACT AND LIGHTWEIGHT
IDEAL FOR NEW CONSTRUCTIONS AND RETROFITS**

IDEAL FOR:

main heat source for any room, above a window or patio door, living space, daycare center, school, playroom, locker room, spa, rooms with limited space

COLORS

- **standard:** soft white

FINISH

- front panel: high temperature, high emissivity paint coating for maximum thermal efficiency
- other parts: hybrid epoxy-polyester powder paint

MANUFACTURING

- aluminum front panel
- 18-gauge steel cabinet and back box
- aluminum end covers
- 24-gauge stainless steel reflector
- full-length wireway
- designed and assembled for reduced noise from the expansion and contraction of metal during heating cycles

ELEMENT

- tubular; stainless steel

CONTROL

- wall thermostat (not included) – the use of an electronic thermostat is strongly recommended
- built-in single pole bimetal thermostat installed in the left or right junction box (optional)

INSTALLATION

- wall mounted at a distance of 2.5 in. or more from the ceiling
- all flammable material must be 6 in. or more from the front of the unit

WARRANTY

- five years

ACCESSORIES

PRODUCT	DESCRIPTION
SCRSPSW	splice plate kit (for installing two units side by side)
SCRBTRSW*	single pole bimetal thermostat with right side end cover
SCRBTLSW*	single pole bimetal thermostat with left side end cover

* Factory installed

TECHNICAL SPECIFICATIONS

PRODUCT	POWER		VOLTAGE	LENGTH	WEIGHT
CODE	WATTS	BTU/H	VOLTS	IN.	LB
SCR0451	450	1536	120	34	6.4
SCR0458	450	1536	208	34	6.4
SCR0452	450/338	1536	240/208	34	6.4
SCR0457	450	1536	277	34	6.4
SCR0601	600	2048	120	47	8.9
SCR0608	600	2048	208	47	8.9
SCR0602	600/450	2048	240/208	47	8.9
SCR0607	600	2048	277	47	8.9
SCR0751	750	2560	120	59	11.1
SCR0758	750	2560	208	59	11.1
SCR0752	750/563	2560	240/208	59	11.1
SCR0757	750	2560	277	59	11.1
SCR0901	900	3071	120	71	13.0
SCR0908	900	3071	208	71	13.0
SCR0902	900/675	3071	240/208	71	13.0
SCR0907	900	3071	277	71	13.0
SCR1051	1050	3583	120	83	15.7
SCR1058	1050	3583	208	83	15.7
SCR1052	1050/788	3583	240/208	83	15.7
SCR1057	1050	3583	277	83	15.7
SCR1201	1200	4095	120	94	17.8
SCR1208	1200	4095	208	94	17.8
SCR1202	1200/900	4095	240/208	94	17.8
SCR1207	1200	4095	277	94	17.8
SCR1508	1500	5119	208	106	20.1
SCR1502	1500/1125	5119	240/208	106	20.1
SCR1507	1500	5119	277	106	20.1

Add SW for soft white

TECHNICAL DRAWINGS

