



Installed Under Carpet Tile



Installed on Top of Flooring Surface

## Express Solution for Power & Data

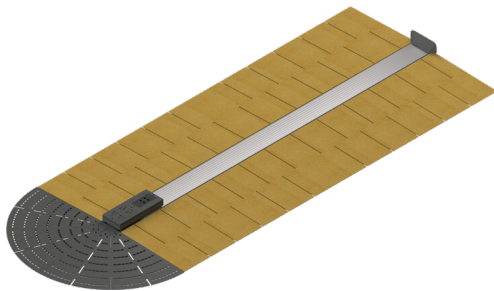
Our Express Kits seamlessly manage both power and data cables and come in two installation options - under carpet tile and on top of any flooring surface. Both options are ideal for applications that need a grab-and-go power/data solution. Express Kits also work easily in both retrofit and new construction applications.

## Features & Benefits

### ▪ Pre-Wired Power.

Quad outlet devices are connected to pre-wired power for simple and quick installation.

*Note: Quad device for installation under carpet tile is different than quad device for on top of flooring application.*



Express Kit for Installation Under Carpet Tile

### ▪ Versatile Data.

Kit installed under carpet tile holds up to 8 customizable keystone modules. Kit installed on top of flooring holds up to 4.

### ▪ Low-Profile Transition Ramps.

Ramps seamlessly transition the wireway to the floor and meet ADA compliance standards.

### ▪ Non-Disruptive Installation.

Easy to install and can be cut to size in the field, which allows more work during regular business hours.



Express Kit for Installation on Top of Any Flooring Surface

## Compliance

### Electrical Listing

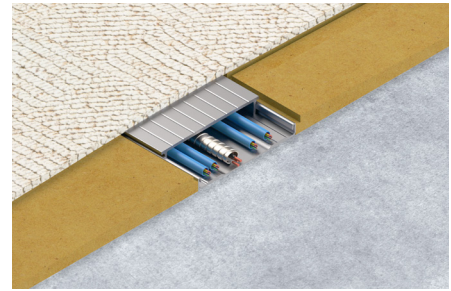
**US:** These devices have been tested to UL Subject 111 standards and listed by ETL / Intertek or UL. The device is identified with the ETL or UL Listed Mark.

**Canada:** These devices have been tested to CAN/CSA 22.2 Nos. 62-69 Standards for Surface Raceway Systems and is listed by ETL / Intertek or UL. The device is identified with the ETL or UL Listed Mark.



### Product Specifications

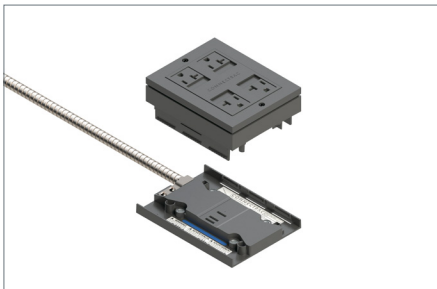
General	
Capacity	Holds 0-8 Data Cables
Load test	1000 lb
Conduit	Pre-wired length of 25' (3-wire), Galvanized Steel
Receptacle Device	4 NEMA 5-20R receptacles, PC Plastic
Components	
Wireway	Extruded Aluminum
Top cover	Extruded Aluminum
Wall base trim	PC Plastic
Data Device	PC Plastic, holds up to 8 keystone modules
Ramps	
End ramp assembly	PC Plastic
Transition ramps	MDF
Installation	
To Surface	Screw mount to any subfloor material that is ½" or thicker
System Specifications	
System width	34 inches
System length	6 feet, 9 feet, 12 feet
Warranty	
	Standard One Year



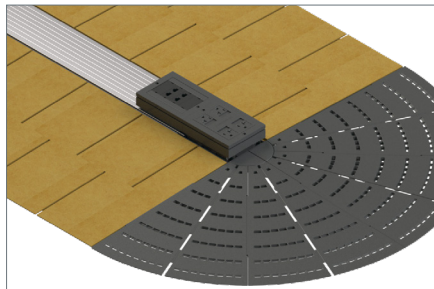
#### Included with each kit

25' pre-wired power infeed, power and data device, top cover, bottom track, and all required transition accessories

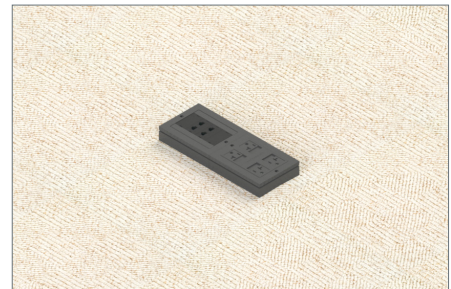
### Product Components



Receptacle Device snaps into the Express Power Hub. Power Hub is attached to a pre-wired, flexible conduit.



Data Device snaps next to the Receptacle Device in the wireway. Low-profile ramps transition system to the floor.



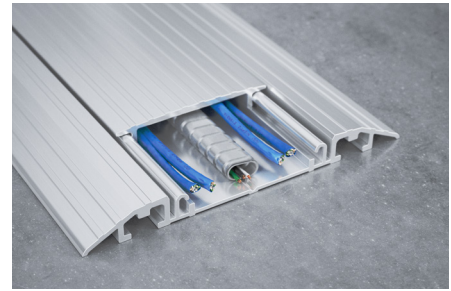
Carpet tiles create a hidden solution for power and data.

### Ordering Information

UPC	Description	Part Number
00810056050115	6' EXPRESS kit w/ 25' single circuit conduit, quad receptacle & data device	CT.XP-06-25.1c
00810056050122	9' EXPRESS kit w/ 25' single circuit conduit, quad receptacle & data device	CT.XP-09-25.1c
00810056050139	12' EXPRESS kit w/ 25' single circuit conduit, quad receptacle & data device	CT.XP-12-25.1c

### Product Specifications

General	
Capacity	Holds 0-4 Data Cables
Load test	1000 lb
Conduit	Pre-wired length of 25' (3-wire), Galvanized Steel
Quad Receptacle	4 NEMA 5-20R receptacles, Powder Coated Steel
Components	
Wireway	Extruded Aluminum, Clear Anodized
Top cover	Extruded Aluminum, Clear Anodized
Wall base trim	ABS Plastic
Data Device	ABS Plastic, 4 keystone modules built in
Ramps	
End ramp assembly	ABS Plastic
Transition ramps	Extruded Aluminum, Clear Anodized
Installation	
To Surface	Screw mount on top of any flooring material that is 1/2" or thicker
System Specifications	
System width	5.5 inches
System length	6 feet, 9 feet, 12 feet
Warranty	
	Standard One Year



#### Included with each kit

25' pre-wired power infeed, power and data device, top cover, bottom track, and all required transition accessories

### Product Components



Quad Receptacle is a single device that supports both power and data. This device is attached to a pre-wired, flexible conduit.



Durable anodized aluminum finish. Smallest footprint for on-floor system.

### Ordering Information

UPC	Description	Part Number
00810056050146	6' EXPRESS-ON kit w/ 25' single circuit conduit & quad receptacle. SILVER	CT.XPO.1-06-25.1c-SV
00810056050153	9' EXPRESS-ON kit w/ 25' single circuit conduit & quad receptacle. SILVER	CT.XPO.1-09-25.1c-SV
00810056050160	12' EXPRESS-ON kit w/ 25' single circuit conduit & quad receptacle. SILVER	CT.XPO.1-12-25.1c-SV