

SOCKETS & ACCESSORIES

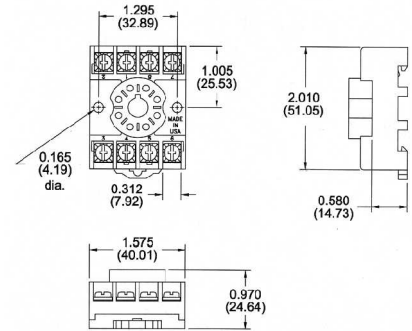
8 Pin Octal Socket-- Surface or DIN Rail-Mounted

10A @ 600V *
1 or 2 #12-22 AWG Wire
Recommended Tightening Torque
of 6-7 in-lbs. (12 in-lbs maximum)
Pressure Wire Clamp Terminations



File #E169693 File #LR701114

Catalog Number 70169-D



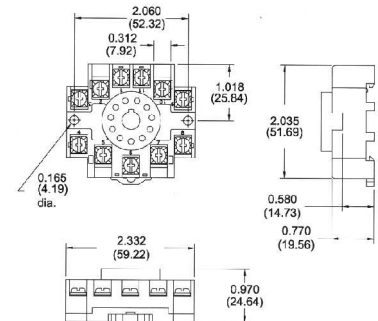
11 Pin Octal Socket-- Surface or DIN Rail-Mounted

10A @ 300V
1 or 2 #12-22 AWG Wire
Recommended Tightening Torque
of 6-7 in-lbs. (12 in-lbs maximum)
Pressure Wire Clamp Terminations



File #E169693 File #LR701114

Catalog Number 70170-D



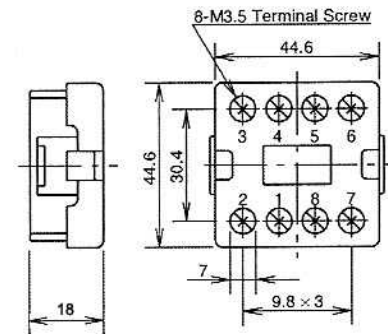
8 Pin Octal Socket-- Back-Mounted

10A @ 300V
Pressure Wire Clamp Terminations



File #E62437

Catalog Number SR6P-M08G



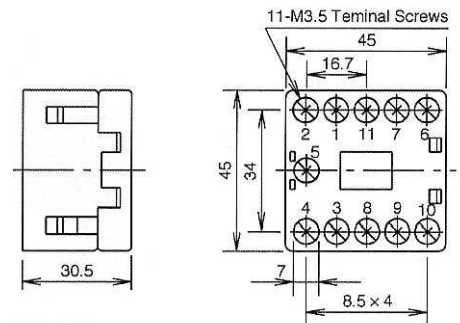
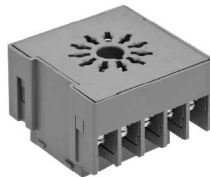
11 Pin Octal Socket-- Back-Mounted

10A @ 300V
Pressure Wire Clamp Terminations



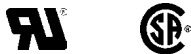
File #E62437

Catalog Number SR6P-M11G



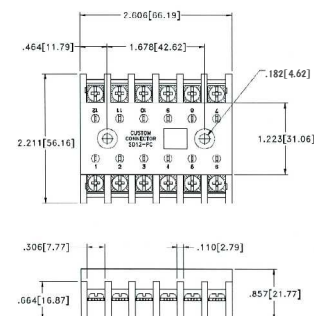
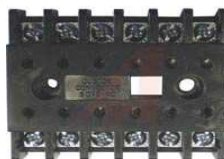
12 Pin Socket-- Surface-Mounted

10A @ 600V
#12-20 AWG Wire
Pressure Wire Clamp Terminations



File #E60008 File #LR29513

Catalog Number SD12-PC



NOTE: if a 12 Pin Socket is required for DIN-rail mounting, please contact Macromatic.

* Plug-in Three-Phase Monitor Relays require a 600V-rated socket when used on system voltages greater than 300V.