

NEMA 3R plug-in and bolt-on

Mini-power centers and other dry-type transformers are stocked by Eaton distributors. They are supported by regional distribution centers that maintain extensive inventories of virtually every dry-type transformer. For the distributor nearest you, call toll free 1-800-525-2000.



Plug-in mini-power center (aluminum-wound transformer and loadcenter chassis standard) catalog number information

| kVA | Style number | Full capacity taps FCBN | Dimensions in inches (mm) ① | | | Weight Lb (kg) | Main circuit breaker ② | | | Feeder breakers max. number ④⑤ | | |
|----------------------------|--------------------|-------------------------|-----------------------------|---------------|---------------|-------------------|------------------------|-----------|-----------|--------------------------------|----------|----------|
| | | | Height | Width | Depth | | Frame | Primary ③ | Secondary | Single-pole | Two-pole | Max. amp |
| Single-phase | | | | | | | | | | | | |
| 480 V to 120/240 V | | | | | | | | | | | | |
| 3 | P48G11S0312 | 2 at -5% | 29.50 (749.3) | 11.90 (302.3) | 8.90 (226.1) | 125 (56) | FR284 | EHD2015 | BR215 | 12 | 6 | 12 |
| 5 | P48G11S0512 | 2 at -5% | 29.50 (749.3) | 11.90 (302.3) | 8.90 (226.1) | 125 (56) | FR284 | EHD2020 | BR225 | 12 | 6 | 20 |
| 7.5 | P48G11S0712 | 2 at -5% | 29.50 (749.3) | 11.90 (302.3) | 8.90 (226.1) | 125 (56) | FR284 | EHD2030 | BR230 | 12 | 6 | 30 |
| 10 | P48G11S1020 | 2 at -5% | 37.50 (952.5) | 13.10 (332.7) | 11.60 (294.6) | 212 (96) | FR286 | EHD2040 | BR250 | 20 | 10 | 40 |
| 15 | P48G11S1526 | 2 at -5% | 43.40 (1102.4) | 15.90 (403.9) | 14.50 (368.3) | 373 (169) | FR287 | EHD2060 | BR270 | 26 | 13 | 60 |
| 25 | P48G11S2526 | 2 at -5% | 43.40 (1102.4) | 15.90 (403.9) | 14.50 (368.3) | 373 (169) | FR287 | EHD2100 | BR2125 | 26 | 13 | 100 |
| 600 V to 120/240 V | | | | | | | | | | | | |
| 5 | P60G11S0512 | 2 at -5% | 29.50 (749.3) | 11.90 (302.3) | 8.90 (226.1) | 125 (56) | FR284 | FDB2015 | BR225 | 12 | 6 | 20 |
| 7.5 | P60G11S0712 | 2 at -5% | 29.50 (749.3) | 11.90 (302.3) | 8.90 (226.1) | 125 (56) | FR284 | FDB2030 | BR230 | 12 | 6 | 30 |
| 10 | P60G11S1020 | 2 at -5% | 37.50 (952.5) | 13.10 (332.7) | 11.60 (294.6) | 212 (96) | FR286 | FDB2040 | BR250 | 20 | 10 | 40 |
| 15 | P60G11S1526 | 2 at -5% | 43.40 (1102.4) | 15.90 (403.9) | 14.50 (368.3) | 373 (169) | FR287 | FDB2060 | BR270 | 26 | 13 | 60 |
| 25 | P60G11S2526 | 2 at -5% | 43.40 (1102.4) | 15.90 (403.9) | 14.50 (368.3) | 373 (169) | FR287 | FDB2100 | BR2125 | 26 | 13 | 100 |
| Three-phase | | | | | | | | | | | | |
| 480 V to 208Y/120 V | | | | | | | | | | | | |
| 15 | P48G28T1518 | 2 at -5% | 36.10 (916.9) | 28.80 (731.5) | 9.40 (238.8) | 320 (145) | FR289B | EHD3040 | EHD3050 | 18 | 9 | 40 |
| 22.5 | P48G28T2124 | 2 at -5% | 40.01 (1016.3) | 32.63 (828.8) | 13.62 (345.9) | 635 (288) | FR291B | EHD3070 | EHD3070 | 24 | 12 | 60 |
| 30 | P48G28T3024 | 2 at -5% | 40.01 (1016.3) | 32.63 (828.8) | 13.62 (345.9) | 635 (288) | FR291B | EHD3090 | EHD3100 | 24 | 12 | 80 |
| 600 V to 208Y/120 V | | | | | | | | | | | | |
| 15 | P60G28T1518 | 2 at -5% | 36.10 (916.9) | 28.80 (731.5) | 9.40 (238.8) | 320 (145) | FR289B | FDB3030 | EHD3050 | 18 | 9 | 40 |
| 22.5 | P60G28T2124 | 2 at -5% | 40.01 (1016.3) | 32.63 (828.8) | 13.62 (345.9) | 635 (288) | FR291B | FDB3050 | EHD3070 | 24 | 12 | 60 |
| 30 | P60G28T3024 | 2 at -5% | 40.01 (1016.3) | 32.63 (828.8) | 13.62 (345.9) | 635 (288) | FR291B | FDB3070 | EHD3100 | 24 | 12 | 80 |

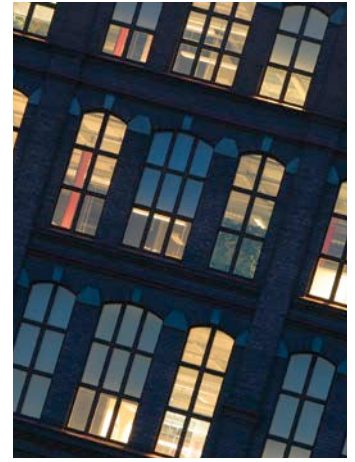
① Not for construction purposes.

② Secondary main breakers fixed only. No substitutes for ampere rating.

③ Optional AIC rated main breakers available. See table on page 3.

④ Combinations can be selected.

⑤ Feeder breakers not included. Use Eaton's Type BR family.



Bolt-on mini-power center (copper-wound transformer and loadcenter chassis standard) catalog number information

| kVA | Style number | Full capacity taps FCBN | Dimensions in inches (mm) ① | | | Weight Lb (kg) | Frame | Main circuit breaker ② | | Feeder breakers max. number ④ ⑤ | | | |
|----------------------------|-----------------------|-------------------------|-----------------------------|---------------|---------------|-------------------|--------|------------------------|-----------|---------------------------------|----------|------------|----------|
| | | | Height | Width | Depth | | | Primary ③ | Secondary | Single-pole | Two-pole | Three-pole | Max. amp |
| Single-phase | | | | | | | | | | | | | |
| 480 V to 120/240 V | | | | | | | | | | | | | |
| 3 | P48G11S0318CUB | 2 at -5% | 36.14 (918.0) | 12.56 (319.0) | 9.66 (245.4) | 110 (50) | FR307 | EHD2015 | BAB2015 | 18 | 9 | — | 12 |
| 5 | P48G11S0518CUB | 2 at -5% | 36.14 (918.0) | 12.56 (319.0) | 9.66 (245.4) | 110 (50) | FR307 | EHD2020 | BAB2025 | 18 | 9 | — | 20 |
| 7.5 | P48G11S0718CUB | 2 at -5% | 36.14 (918.0) | 12.56 (319.0) | 9.66 (245.4) | 110 (50) | FR307 | EHD2030 | BAB2030 | 18 | 9 | — | 30 |
| 10 | P48G11S1024CUB | 2 at -5% | 43.91 (1115.3) | 14.97 (380.2) | 11.82 (300.2) | 215 (98) | FR309 | EHD2040 | BAB2050 | 24 | 12 | — | 40 |
| 15 | P48G11S1530CUB | 2 at -5% | 43.37 (1101.6) | 20.41 (518.4) | 14.58 (370.3) | 385 (175) | FR310 | EHD2060 | BAB2070 | 30 | 15 | — | 60 |
| 25 | P48G11S2530CUB | 2 at -5% | 43.37 (1101.6) | 20.41 (518.4) | 14.58 (370.3) | 385 (175) | FR310 | EHD2100 | BAB2125 | 30 | 15 | — | 100 |
| 600 V to 120/240 V | | | | | | | | | | | | | |
| 3 | P60G11S0318CUB | 2 at -5% | 36.14 (918.0) | 12.56 (319.0) | 9.66 (245.4) | 110 (50) | FR307 | FDB2015 | BAB2015 | 18 | 9 | — | 12 |
| 5 | P60G11S0518CUB | 2 at -5% | 36.14 (918.0) | 12.56 (319.0) | 9.66 (245.4) | 110 (50) | FR307 | FDB2020 | BAB2025 | 18 | 9 | — | 20 |
| 7.5 | P60G11S0718CUB | 2 at -5% | 36.14 (918.0) | 12.56 (319.0) | 9.66 (245.4) | 110 (50) | FR307 | FDB2030 | BAB2030 | 18 | 9 | — | 30 |
| 10 | P60G11S1024CUB | 2 at -5% | 43.91 (1115.3) | 14.97 (380.2) | 11.82 (300.2) | 215 (98) | FR309 | FDB2040 | BAB2050 | 24 | 12 | — | 40 |
| 15 | P60G11S1530CUB | 2 at -5% | 43.37 (1101.6) | 20.41 (518.4) | 14.58 (370.3) | 385 (175) | FR310 | FDB2060 | BAB2070 | 30 | 15 | — | 60 |
| 25 | P60G11S2530CUB | 2 at -5% | 43.37 (1101.6) | 20.41 (518.4) | 14.58 (370.3) | 385 (175) | FR310 | FDB2100 | BAB2125 | 30 | 15 | — | 100 |
| Three-phase | | | | | | | | | | | | | |
| 480 V to 208Y/120 V | | | | | | | | | | | | | |
| 15 | P48G28T1518CUB | 2 at -5% | 34.27 (870.5) | 31.50 (800.1) | 9.35 (237.5) | 320 (145) | FR289B | EHD3040 | BAB3050H | 18 | 9 | 6 | 40 |
| 22.5 | P48G28T2124CUB | 2 at -5% | 40.01 (1016.3) | 32.63 (828.8) | 13.62 (345.9) | 635 (288) | FR291B | EHD3070 | BAB3070H | 24 | 12 | 6 | 60 |
| 30 | P48G28T3024CUB | 2 at -5% | 40.01 (1016.3) | 32.63 (828.8) | 13.62 (345.9) | 635 (288) | FR291B | EHD3090 | BAB3100H | 24 | 12 | 8 | 80 |
| 600 V to 208Y/120 V | | | | | | | | | | | | | |
| 15 | P60G28T1518CUB | 2 at -5% | 34.27 (870.5) | 31.50 (800.1) | 9.35 (237.5) | 320 (145) | FR289B | FDB3030 | BAB3050H | 18 | 9 | 6 | 40 |
| 22.5 | P60G28T2124CUB | 2 at -5% | 40.01 (1016.3) | 32.63 (828.8) | 13.62 (345.9) | 635 (288) | FR291B | FDB3050 | BAB3070H | 24 | 12 | 6 | 60 |
| 30 | P60G28T3024CUB | 2 at -5% | 40.01 (1016.3) | 32.63 (828.8) | 13.62 (345.9) | 635 (288) | FR291B | FDB3070 | BAB3100H | 24 | 12 | 8 | 80 |

- ① Not for construction purposes.
- ② Main breakers fixed only. No substitutes for ampere rating.
- ③ Optional AIC rated main breakers available. See table on page 3.
- ④ Combinations can be selected.
- ⑤ Feeder breakers not included. Use Eaton's Type BAB family.