

# T8

## 16.5T8/COR/48-840/MF21/G/347V 25/1

Our TLEDs are available in InstantFit (Type A / Type C) or MainsFit (Ballast bypass / Type B) versions. The InstantFit lamps work on a broad variety of ballasts and LED drivers. Only InstantFit has over 15,000 lamp & ballast combinations delivering even light output, energy savings and a long lifetime. Our MainsFit products feature a double-ended design, simplifying installation while a proprietary safety circuit minimizes a shock risk. Lamp sizes range from 2-foot to 8-foot and U-bend with a variety of lumen outputs.

### Product data

General information		Starting Time (Nom)	
Cap-Base	G13 [ Medium Bi-Pin Fluorescent]		0.5 s
EU RoHS compliant	Yes	Warm Up Time to 60% Light (Nom)	0.9 s
Nominal Lifetime (Nom)	50000 h	UL Type	Type B - bypass the ballast
Switching Cycle	50000X	Power Factor (Nom)	0.9
		Voltage (Nom)	347 V
Light technical		Temperature	
Color Code	841 [ CCT of 4100K (841)]	T-Ambient (Max)	45 °C
Beam Angle (Nom)	240 °	T-Ambient (Min)	-20 °C
Luminous Flux (Nom)	2100 lm	T-Storage (Max)	85 °C
Color Designation	Cool White (CW)	T-Storage (Min)	-40 °C
Correlated Color Temperature (Nom)	4000 K	T-Case Maximum (Nom)	55 °C
Luminous Efficacy (rated) (Nom)	127.00 lm/W		
Color Consistency	<6	Controls and dimming	
Color Rendering Index (Nom)	80	Dimmable	No
LLMF At End Of Nominal Lifetime (Nom)	70 %		
Operating and electrical		Mechanical and housing	
Input Frequency	50 to 60 Hz	Bulb Material	Glass
Power (Rated) (Nom)	16.5 W	Product Length	1200 mm

# T8

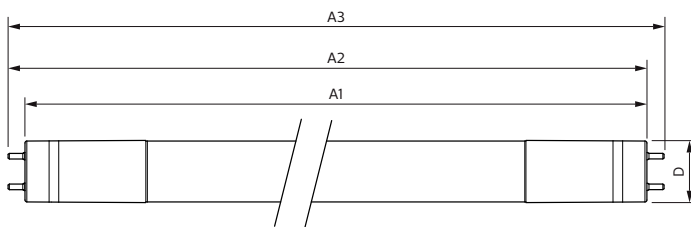
Bulb Shape	Tube, double-ended
<b>Approval and application</b>	
Energy Saving Product	Yes
Approval Marks	RoHS compliance UL certificate DLC compliance
Energy Consumption kWh/1000 h	- kWh

## Product data

Order product name	16.5T8/COR/48-840/MF21/G/347V 25/1
--------------------	------------------------------------

EAN/UPC - Product	046677554682
Order code	554683
Numerator - Quantity Per Pack	1
Numerator - Packs per outer box	25
Material Nr. (12NC)	929002264004
Net Weight (Piece)	0.096 kg

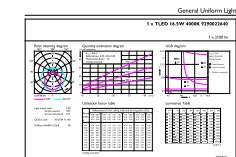
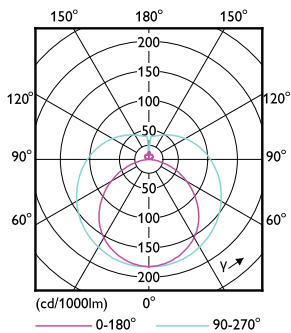
## Dimensional drawing



Product	D	A1	A2	A3
16.5T8/COR/48-840/MF21/G/347V 25/1	26 mm	1199.4 mm	1206.5 mm	1213.6 mm

## 16.5T8/COR/48-840/MF21/G/347V 25/1

## Photometric data



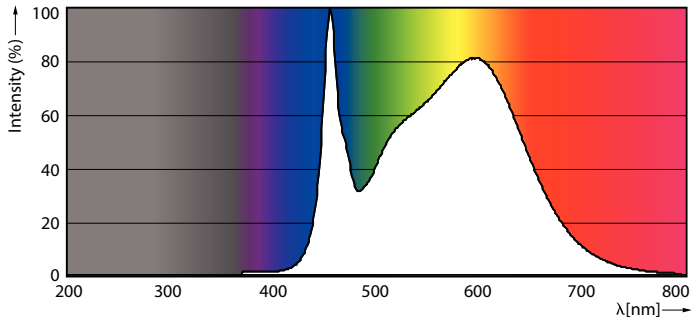
OSRAM Powerline G1 Philips Lighting G1 Page 1/1

## T8 COR MF20 G-LDD

## T8 COR MF21 G-GUL

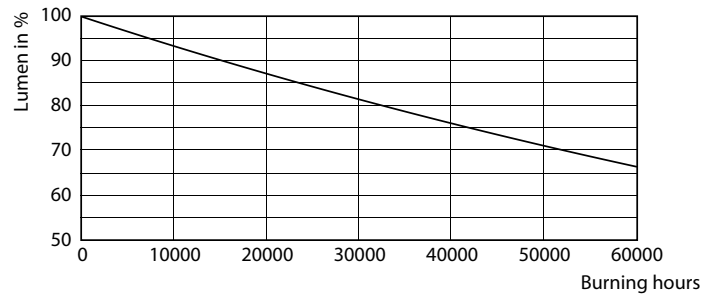
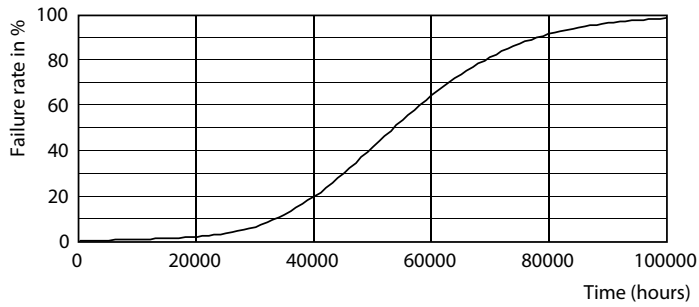
# T8

## Photometric data



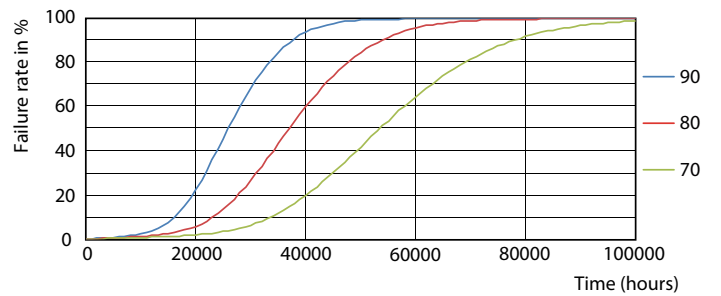
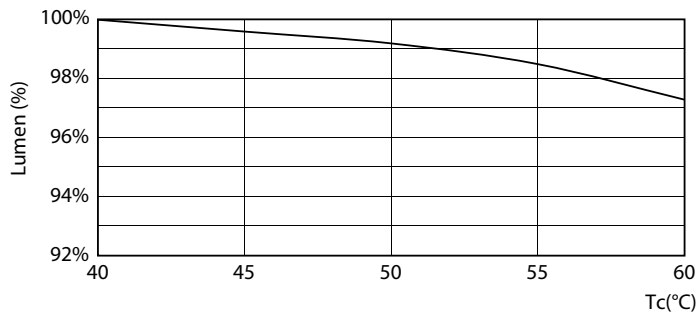
T8 COR MF21 G-POC

## Lifetime



T8 COR MF20 G-LED

T8 COR MF20 G-LMP



T8 COR G LumenVsTc-LMP

T8 COR G FailureRate-LED