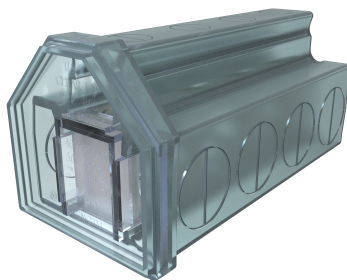


SKU: PCT-4-800

UPC: 0783669700749

Features & Benefits:

Description: Cleartap Insulated Aluminum Multi-Tap Connector, Dual Rated, Conductor Range 850-250, 4 Ports, Tin Plated, UL, CSA



Specs

Additional Class Attributes

Connection	Mechanical
Contains DE-OX®	Yes
Number of Conductors	4
Number of Poles	1
Number of Ports / Wireways	4
Number of Usable Ports	4

Dimensions

Drive Size Main	1/2
Drive Type Main	Internal Hex
Height (IN)	3.389
Height BX (IN)	7
Height (mm)	86.0806
Length (IN)	6.918
Length (mm)	175.7172
Max Insulation OD (IN)	1.335
Max Insulation OD (mm)	33.909
Weight (LB)	1.895
Weight BX (LB)	4.0818
Width (IN)	3.428
Width BX (IN)	8
Width (mm)	87.0712

Material and Finish

Conductor Material	Copper
Connector Finish	Tin
Insulation	Plastisol
Material	Aluminum
Wire Binding Hardware Finish	Tin
Wire Binding Hardware Material	Aluminum

Bolt and Screw Sizes

Number of Wire Binding Screws per Port	1
Wire Binding Screw Size	15/16
Wire Binding Torque	500

General

Bag Quantity	1
Carton Quantity Description	STD PACK QTY 2
Dual Rated	Yes
NEMA Code	S-588-4
UPC Code	78366970074

Testing Standards

CSA File Number	LR-29601
CSA Standard	C22.2 No. 65-03
Prop65 Compliance	WARNING: Cancer and Reproductive Harm - www.P65warnings.ca.gov
UL Control Number	453G
UL / CULUS Specification	UL 486A/B Listed
UL File Number	E6207

Color

Color	Clear
-------	-------

Conductor Ranges

Conductor Range AL Solid (Secondary, tap, load)	NA
Conductor Range AL Stranded (Primary, run, main, line)	800 kcmil - 250 kcmil
Conductor Range AL Stranded (Secondary, tap, load)	NA
Conductor Range CU Solid (Primary, run, main, line)	NA
Conductor Range CU Solid (Secondary, tap, load)	NA
Conductor Range CU Stranded (Primary, run, main, line)	800 kcmil - 250 kcmil
Conductor Range CU Stranded (Secondary, tap, load)	NA
Conductor Range AL Solid (Primary, run, main, line)	NA
Flex Conductor Range	NA

Additional Technical Specifications

Connector Amperage Rating CU (Derated where applicable)	555 Amps
Conductor Type	Stranded

Voltage

Voltage Rating	600 V
----------------	-------

Environment and Temperature

Environmental Conditions	Cold temperature rated to -45°C
Flammability Rating	Insulation rated per UL 94
Temperature Rating	90°C