



T8

33T8/COR/96-840/MF44/G/FA8 10/1

Our TLEDs are available in InstantFit (Type A / Type C) or MainsFit (Ballast bypass / Type B) versions. The InstantFit lamps work on a broad variety of ballasts and LED drivers. Only InstantFit has over 15,000 lamp & ballast combinations delivering even light output, energy savings and a long lifetime. Our MainsFit products feature a double-ended design, simplifying installation while a proprietary safety circuit minimizes a shock risk. Lamp sizes range from 2-foot to 8-foot and U-bend with a variety of lumen outputs.

Product data

General information	
Cap-Base	FA8 [FA8]
EU RoHS compliant	Yes
Nominal Lifetime (Nom)	50000 h
Switching Cycle	50000X
Light technical	
Color Code	841 [CCT of 4100K (841)]
Beam Angle (Nom)	240 °
Luminous Flux (Nom)	4400 lm
Color Designation	Cool White (CW)
Correlated Color Temperature (Nom)	4000 K
Luminous Efficacy (rated) (Nom)	133.00 lm/W
Color Consistency	<6
Color Rendering Index (Nom)	80
LLMF At End Of Nominal Lifetime (Nom)	70 %
Operating and electrical	
Input Frequency	50 to 60 Hz
Power (Rated) (Nom)	33 W

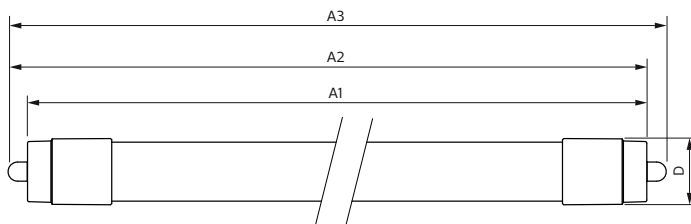
Lamp Current (Max)	340 mA
Lamp Current (Min)	150 mA
Starting Time (Nom)	0.5 s
Warm Up Time to 60% Light (Nom)	0.5 s
UL Type	Type B - bypass the ballast
Power Factor (Nom)	0.9
Voltage (Nom)	120-277 V
Temperature	
T-Ambient (Max)	45 °C
T-Ambient (Min)	-20 °C
T-Storage (Max)	65 °C
T-Storage (Min)	-40 °C
T-Case Maximum (Nom)	50 °C
Controls and dimming	
Dimmable	Limited
Mechanical and housing	
Bulb Finish	Frosted

T8

Bulb Material	Glass
Product Length	2400 mm
Bulb Shape	Tube, double-ended
Approval and application	
Energy Saving Product	Yes
Approval Marks	RoHS compliance UL certificate DLC compliance
Product data	
Order product name	33T8/COR/96-840/MF44/G/FA8 10/1

EAN/UPC - Product	046677575724
Order code	575720
Numerator - Quantity Per Pack	1
Numerator - Packs per outer box	10
Material Nr. (12NC)	929003112104
Net Weight (Piece)	0.400 kg
Model Number	9290031121

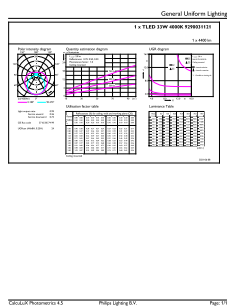
Dimensional drawing



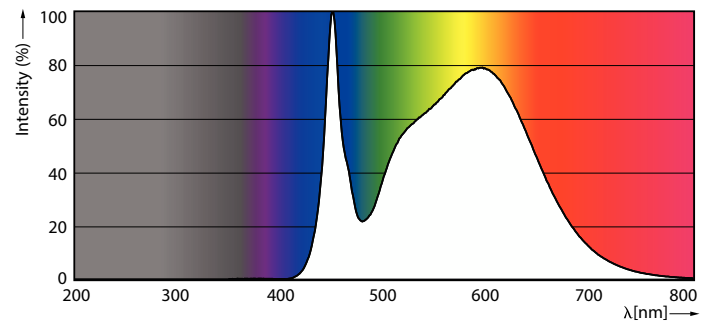
Product	33T8/COR/96-840/MF44/G/FA8 10/1
----------------	---------------------------------

33T8/COR/96-840/MF44/G/FA8 10/1

Photometric data

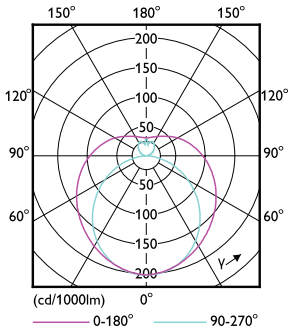


LEDtube COR 8ft 33W FA8 4400lm 840-GUL



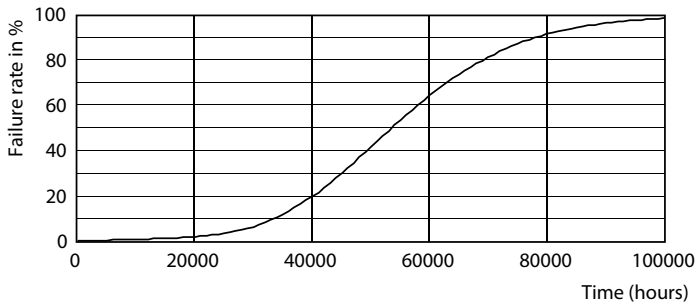
LEDtube COR 8ft 42W FA8 5400lm 840-POC

Photometric data

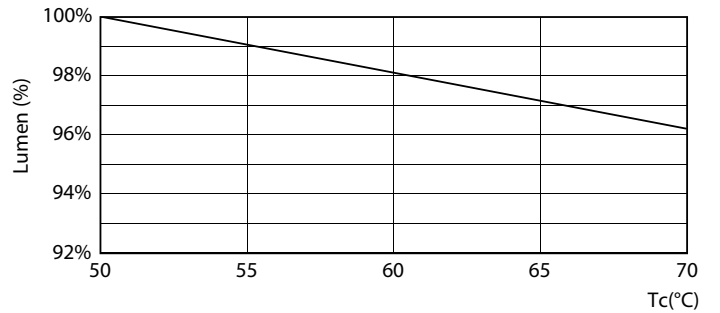


LEDtube COR 8ft 33W FA8 4400lm-LDD

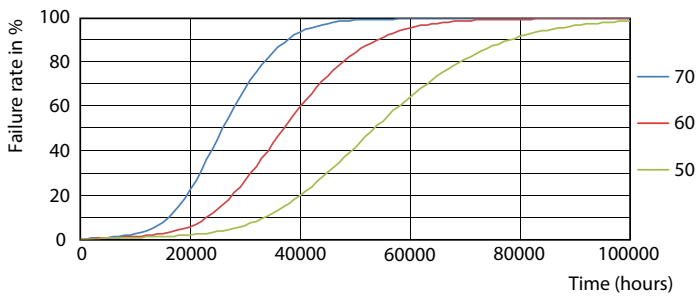
Lifetime



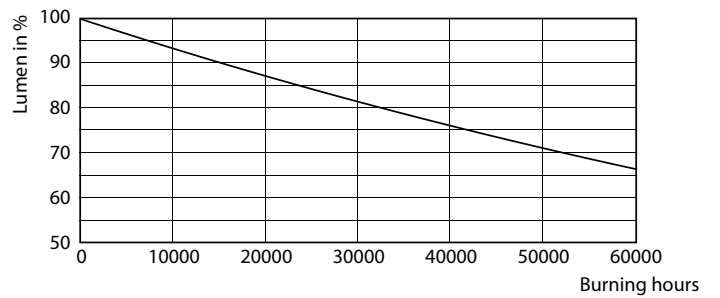
LEDtube 50K-LED



LEDtube COR 8ft 33W 50K LumenVsTc-LMP

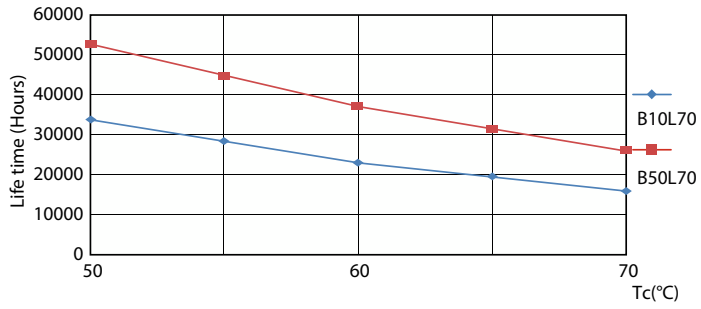


LEDtube COR 8ft 33W 50K FailureRate-LED



LEDtube 50K-LMP

Lifetime



LEDtube COR 8ft 33W 50K LifetimeVsTc-LED

