

CONTACT POLE LOCATION CHART

POLES	LOCATION
2	2 & 5
3	2, 3 & 5
4	2, 3, 4 & 5
6	1 - 6
8	1 - 6, 8 & 11
10	1 - 6, 8, 9, 10 & 11
12	1 - 12

AUXILIARY CONTACT RATING  
 ACC. CLM4097291 (1PDT)  
 ACC. CLM4097292 (2PDT)  
 10A, 1/3 HP  
 277 VAC  
 0.5A, 125VDC  
 0.25A, 250VDC

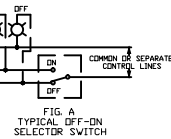
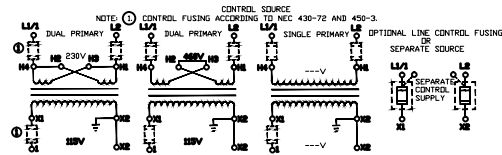
MAIN CONTACT MAXIMUM VOLTAGE RATINGS OPEN OR CLOSED

POLES TO LOAD	AMPERE CONTINUOUS	
	2 FOR 1 <sup>φ</sup>	3 <sup>φ</sup>
250 AC	250 AC	20 TUNGSTEN
277 AC	480 AC	20 BALLAST
347 AC	600 AC	30 GENERAL

20 AMP. DC GENERAL	125V DC MAX. 2 POLES IN SERIES
	250V DC MAX. 3 POLES IN SERIES

SWITCH IS SUITABLE FOR USE IN A CIRCUIT CAPABLE OF DELIVERING NOT MORE THAN THE RMS SYMMETRICAL CURRENT AT THE MAXIMUM VOLTAGE SHOWN BELOW, WHEN PROTECTED BY A 30 AMP CIRCUIT BREAKER HAVING AN INTERRUPTING RATING OF NOT LESS THAN VALUES SHOWN.

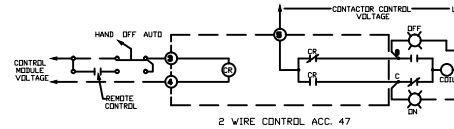
MAXIMUM RMS AMPERES	MAXIMUM AC VOLTS
22,000	250
14,000	480
10,000	600



CONNECTIONS TO CONTROL MODULES

MODULE TERMINAL	CONNECT TO:
1	NOT USED
2	CONT. STATION FOR ACC. 48 & 49
3	CONT. STATION FOR ACC. 47, 48 & 49
4	MODULE CONTROL VOLTAGE *
5	CONTACTOR CONTROL VOLTAGE
0	TERMINAL 'C' ON CONTACTOR
C	TERMINAL 'C' ON CONTACTOR

\* FOR 24 VDC CONTROL MODULES CONNECT TERMINAL 4 TO NEGATIVE (-)



2 WIRE CONTROL ACC. 47

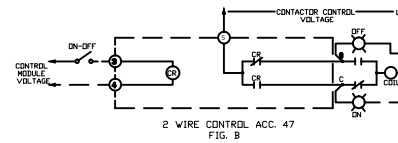


FIG. B

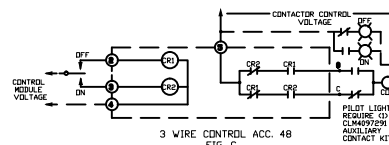


FIG. C

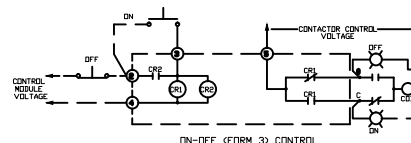


FIG. D

GENERAL NOTES

- WHEN CONTACTOR & LINE VOLTAGE ARE THE SAME, THE CONTACTOR CONTROL VOLTAGE CAN BE DERIVED FROM THE LINE POLES OF THE CONTACTOR SWITCH.
- MAIN CONTACTS ARE SHOWN IN OPEN POSITION WITH CONTROL LINE DE-ENERGIZED. SEE RATINGS BELOW. (SWITCH SHIPPED WITH CONTACTS CLOSED).
- LINE & LOAD TERMINALS ARE REVERSIBLE.
- CONTACTS ARE SINGLE THROW, DOUBLE BREAK, WITH MOMENTARILY ENERGIZED SINGLE COIL OPERATOR MECHANICALLY HELD IN BOTH OPEN & CLOSED POSITIONS.
- CUSTOMER CONNECTIONS TO LINE & LOAD WILL ACCEPT NO. 18AWG TO 10AWG COPPER WIRE. TORQUE LINE POLE CONNECTION TO 18 in. lb.
- CUSTOMER CONNECTIONS TO ELECTRONIC MODULE (ACC. 47, 48, OR 49) WILL ACCEPT NO. 22AWG TO 12AWG COPPER WIRE. TORQUE CONTROL TERMINALS TO 12 in. lb.
- CONTROL MODULE VOLTAGE SUPPLIED BY CUSTOMER.

SIEMENS

24306100401

Format/Size: DIN A4