

**NEW & IMPROVED**  
Interior Coating on EMT  
& IMC reduces coefficient  
of friction up to 35%!

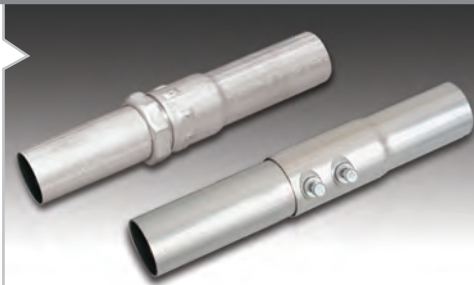
# PRACTICALLY PUTS ITSELF TOGETHER



Save Time & Money with Kwik-Fit®  
EMT, Kwik-Fit® Compression EMT  
and Kwik-Couple® IMC and GRC

Visit [alliedeg.com](http://alliedeg.com) for more information.

**KWIK-FIT® PRODUCTS**



## **KWIK-FIT® & KWIK-FIT® COMPRESSION EMT**

- Built in coupling cuts installation time
- Up to 50% lower labor cost
- Fast two step installation
- Kwik-Fit® EMT meets Buy America and Buy American regulations
- Kwik-Fit® Compression EMT meets Buy American regulations



## **KWIK-COUPLE® IMC AND GRC**

- Up to 50% lower labor cost - no need to turn the conduit
- No more three piece couplings - great in cramped spaces and for offsets and bends
- IMC weighs 1/3 less than rigid conduit and saves up to 30% in cost over GRC
- Kwik-Couple® IMC and GRC meet Buy American requirements

**THINK KWIK!!**



### Kwik-Fit® EMT

Trade Size	Metric Designator	Outside Diameter <sup>1</sup>		Nominal Wall Thickness		Approximate Weight Per 100 Ft. (30.5M)		Quantity in Master Bundle	
		in	mm	in	mm	lb	kg	ft	m
1 1/4	35	1.510	38.35	0.065	1.65	101	45.8	840	256.0
1 1/2	41	1.740	44.20	0.065	1.65	116	52.6	720	219.5
2	53	2.197	55.80	0.065	1.65	148	67.1	500	152.4
2 1/2	63	2.875	73.03	0.072	1.83	216	98.0	350	106.7
3	78	3.500	88.90	0.072	1.83	263	119.3	300	91.4
3 1/2	91	4.000	101.60	0.083	2.11	349	158.3	250	76.2
4	103	4.500	114.30	0.083	2.11	393	178.3	250	76.2



### Kwik-Fit® Compression EMT

Trade Size	Metric Designator	Outside Diameter <sup>1</sup>		Nominal Wall Thickness		Approximate Weight Per 100 Ft. (30.5M)		Quantity in Master Bundle	
		in	mm	in	mm	lb	kg	ft	m
1 1/4	35	1.510	38.35	0.065	1.65	107	48.5	840	256.0
1 1/2	41	1.740	44.20	0.065	1.65	125	56.7	720	219.5
2	53	2.197	55.80	0.065	1.65	162	73.5	500	152.4
2 1/2	63	2.875	73.03	0.072	1.83	239	108.4	350	106.7
3	78	3.500	88.90	0.072	1.83	291	132.0	300	91.4
3 1/2	91	4.000	101.60	0.083	2.11	383	173.7	250	76.2
4	103	4.500	114.30	0.083	2.11	431	195.5	250	76.2

<sup>1</sup>Outside diameter tolerances +/- .005 in. (.13mm) for size 1-1/4 (35) through 2 (53)  
 +/- .010 in. (.25mm) for size 2-1/2 (63);  
 +/- .015 in. (.38mm) for size 3 (78);  
 +/- .020 in. (.50mm) for sizes 3-1/2 (91) and 4 (103).

NOTE: Length = 10 ft. (3.05m) with a tolerance of +/- .25 in. (6mm)



### Kwik-Couple® IMC Conduit

Trade Size	Metric Designator	Average Outside Diameter <sup>1</sup>		Average Wall Thickness <sup>2</sup>		Approximate Weight Per 100 Ft. (30.5M)		Quantity In Master Bundle	
		in.	mm.	in.	mm.	lb.	kg.	ft.	m.
2-1/2	63	2.857	72.56	0.140	3.56	441	200.0	400	122.0
3	78	3.476	88.29	0.140	3.56	543	246.3	300	91.5
3-1/2	91	3.971	100.86	0.140	3.56	629	285.3	250	76.3
4	103	4.466	113.4	0.140	3.56	700	317.5	200	61.0

<sup>1</sup>Outside diameter tolerances: +/- .010 in. (.25mm)

NOTE: Length (w/coupling) = 10 ft. (3.05m) with a tolerance of +/- .25in. (6.35mm).

<sup>2</sup>Wall thickness tolerances: + .020 in. (.51mm) and -.000

### Kwik-Couple® (GRC)

UL Safety Standard 6

Manufactured in accordance with ANSI C80.1



Trade Size	Metric Designator	Outside Diameter <sup>1</sup>		Nominal Wall Thickness <sup>2</sup>		Approximate Weight Per 100 Ft. (30.5M)		Bundle Quantity	
		in	mm	in	mm	lb	kg	ft	m
2 1/2	63	2.875	73.03	0.193	4.90	559	253.6	400	121.9
3	78	3.500	88.90	0.205	5.21	727	329.8	300	91.4
3 1/2	91	4.000	101.60	0.215	5.46	880	399.2	250	76.2
4	103	4.500	114.30	0.225	5.72	1030	467.2	200	61.0
5	129	5.563	141.30	0.245	6.22	1400	635.0	150	45.7

<sup>1</sup>Tolerances: Trade Size 2-1/2 to 5: ± 1%

<sup>2</sup>For information only. Not a requirement of the UL standard.