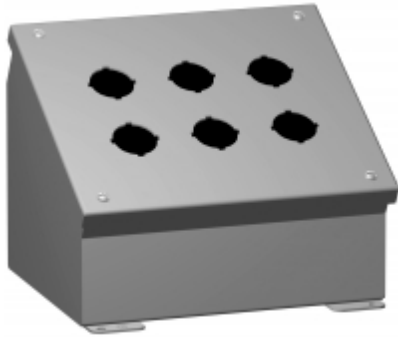




Quality Products. Service Excellence.

Type 12 Mild Steel Pushbutton Enclosures *1490 Series*

Sloped Console



Application

- Designed to accept standard heavy duty oil tight pushbuttons, switches and pilot lights.
- Ideal for wall or surface mounting to provide the necessary control slope.
- Provides protection from dirt, dust, oil and water.

Standards

- UL 508A Type 12 and 13
- CSA Type 12 and 13
- **Complies with**
 - NEMA Type 12 and 13
 - IEC 60529, IP54
- Appropriate components are required to maintain these standards.

Construction

- Formed 14 gauge steel.
- Smooth continuously welded seams.
- Construction provides either a 30° or 60° slope on front cover depending on mounting position.
- Welded brackets provide for enclosure mounting.
- Captive cover screws thread into sealed wells.
- Larger enclosures provide internally hinged removable covers designed to hold the cover open during wiring (as noted in table).
- Oil resistant gasket and adhesive.
- A bonding stud is provided on the door and a grounding stud is provided on the enclosure.

Finish

- Cover and enclosure are phosphatized and finished in ANSI 61 gray powder coating.

Accessories

- Hole Plugs
- Pedestal and Base
- General Accessories

New and improved PDF part drawing files with more detail now available.

Click part number in table below to access PDF, DXF, and STEP files.

| 30.5mm PB | 22.5mm PB | No. Of | Enclosure |
|-----------|-----------|--------|-----------|
|-----------|-----------|--------|-----------|

| Part No. | Part No. | Holes | H | W | D |
|---------------------|----------------------|-------|-------|-------|-------|
| 1490D1 ¹ | 1490MD1 ¹ | 1 | 3.50 | 3.25 | 4.88 |
| 1490D2 ¹ | 1490MD2 ¹ | 2 | 3.50 | 5.50 | 4.88 |
| 1490D3 ¹ | 1490MD3 ¹ | 3 | 3.50 | 7.75 | 4.88 |
| 1490D4 ¹ | 1490MD4 ¹ | 4 | 3.50 | 10.00 | 4.88 |
| 1490G4 | 1490MG4 | 4 | 7.25 | 6.25 | 6.75 |
| 1490G6 | 1490MG6 | 6 | 7.25 | 8.50 | 6.75 |
| 1490G8 | 1490MG8 | 8 | 7.25 | 10.75 | 6.75 |
| 1490H9 | 1490MH9 | 9 | 9.50 | 8.50 | 7.88 |
| 1490G10 | 1490MG10 | 10 | 7.25 | 13.00 | 6.75 |
| 1490G12 | 1490MG12 | 12 | 7.25 | 15.25 | 6.75 |
| 1490J12 | 1490MJ12 | 12 | 11.75 | 8.50 | 9.00 |
| 1490G16 | 1490MG16 | 16 | 7.25 | 19.75 | 6.75 |
| 1490J16 | 1490MJ16 | 16 | 11.75 | 10.75 | 9.00 |
| 1490J20 | 1490MJ20 | 20 | 11.75 | 13.00 | 9.00 |
| 1490K25 | 1490MK25 | 25 | 14.00 | 13.00 | 10.13 |
| 1490K30 | 1490MK30 | 30 | 14.00 | 15.25 | 10.13 |

¹ Not hinged

Data subject to change without notice

© 2021. Hammond Manufacturing Ltd. All rights reserved.