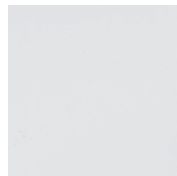


Order code	Description	Color	Material	Type	Maximum wattage (W)	Wiring	Case qty (master)
Post Top Fitter							
35545	POST TOP FITTER POLY BL 3" 4KV	Black	Polycarbonate	Solid Flange	60	Snap-in 4 KV pulse rated	50
35547	POST TOP FITTER POLY WH 3" 4KV	White	Polycarbonate	Solid Flange	60	Snap-in 4 KV pulse rated	50
35546	POST TOP FITTER B-4 HARDWARE KIT	-	-	-	-	-	1

Lens

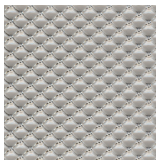


Flat Sheet

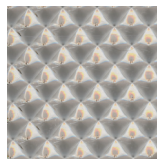


Cracked Ice

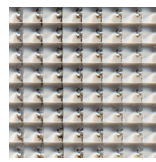
Order code	Description	Colour	Material	Nominal Size (ft)	Actual size (in.)	Thickness (in.)
Flat Sheet						
12405	FLAT SHEET LENS 0.080 ACR OP 1x4	Opal	Acrylic	1 x 4	11-3/4 x 47-3/4	0.080
12406	FLAT SHEET LENS 0.080 ACR WH 1x4 NOM	White	Acrylic	1 x 4	11-3/4 x 47-3/4	0.080
35573	FLAT SHEET LENS 0.125 ACR OP 1x4	Opal	Acrylic	1 x 4	11-3/4 x 47-3/4	0.125
35022	FLAT SHEET LENS 0.080 ACR OP 2x2	Opal	Acrylic	2 x 2	23-3/4 x 23-3/4	0.080
35024	FLAT SHEET LENS 0.080 ACR OP 2x4	Opal	Acrylic	2 x 4	23-3/4 x 47-3/4	0.080
59093	FLAT SHEET LENS 0.125 ACR OP 2x4	Opal	Acrylic	2 x 4	23-3/4 x 47-3/4	0.125
59078	FLAT SHEET LENS 0.020 ACR WH 3x5	White	Acrylic	3 x 5	36 x 60	0.020
59073	FLAT SHEET LENS 0.118 ACR CL 4x8	Clear	Acrylic	4 x 8	48 x 96	0.118
59097	FLAT SHEET LENS 0.125 ACR WH 4x8	White	Acrylic	4 x 8	48 x 96	0.125
Cracked Ice						
59088	CRACKED ICE LENS 0.060 STY CL 2x4	Clear	Styrene	2 x 4	23-3/4 x 47-3/4	0.060
59089	CRACKED ICE LENS 0.060 STY OP 2x4	Opal	Styrene	2 x 4	23-3/4 x 47-3/4	0.060



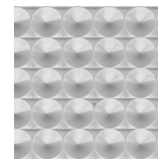
K12



K15



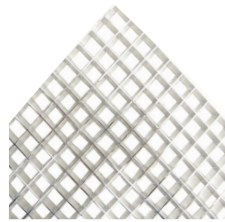
K19



K23

Order code	Description	Colour	Material	Nominal size (ft)	Actual size (in.)	Thickness (in.)
K12 Prismatic						
60111	K12 LENS 0.095 ACR CL 1.25x4	Clear	Acrylic	1.25 x 4	14-3/8 x 47-1/4	0.095
12889	K12 LENS 0.100 ACR CL 1x4 NOM	Clear	Acrylic	1 x 4	11-3/4 x 47-3/4	0.100
35139	K12 LENS 0.100 ACR CL 1x4 FULL	Clear	Acrylic	1 x 4	12 x 48	0.100
11254	K12 LENS 0.110 ACR CL 1x4 FULL	Clear	Acrylic	1 x 4	11-3/4 x 47-3/4	0.110
35570	K12 LENS 0.125 ACR OP 1x4	Opal	Acrylic	1 x 4	11-3/4 x 47-3/4	0.125
11255	K12 LENS 0.125 ACR CL 1x4 FULL	Clear	Acrylic	1 x 4	12 x 48	0.125
58173	K12 LENS 0.100 ACR CL 2x2 NOM	Clear	Acrylic	2 x 2	23-3/4 x 23-3/4	0.100
58174	K12 LENS 0.100 ACR CL 2x2 FULL	Clear	Acrylic	2 x 2	24 x 24	0.100
35005	K12 LENS 0.110 ACR CL 2x2 NOM	Clear	Acrylic	2 x 2	23-3/4 x 23-3/4	0.110
35571	K12 LENS 0.125 ACR OP 2x2	Opal	Acrylic	2 x 2	23-3/4 x 23-3/4	0.125
35222	K12 LENS 0.110 ACR CL 2x2 FULL	Clear	Acrylic	2 x 2	24 x 24	0.110
35006	K12 LENS 0.125 ACR CL 2x2	Clear	Acrylic	2 x 2	23-3/4 x 23-3/4	0.125
64630	K12 LENS 0.100 ACR CL 2x4 FULL	Clear	Acrylic	2 x 4	24 x 48	0.100
64628	K12 LENS 0.110 ACR CL 2x4 NOM	Clear	Acrylic	2 x 4	23-3/4 x 47-3/4	0.110
59087	K12 LENS 0.125 ACR OP 2x4	Opal	Acrylic	2 x 4	23-3/4 x 47-3/4	0.125
64629	K12 LENS 0.110 ACR CL 2x4 FULL	Clear	Acrylic	2 x 4	24 x 48	0.110
64631	K12 LENS 0.125 ACR CL 2x4 NOM	Clear	Acrylic	2 x 4	23-3/4 x 47-3/4	0.125
59086	K12 LENS 0.125 POLY CL 2x4	Clear	Polycarbonate	2 x 4	23-3/4 x 47-3/4	0.125
64632	K12 LENS 0.125 ACR CL 2x4 FULL	Clear	Acrylic	2 x 4	24 x 48	0.125
12395	K12 LENS 0.125 ACR CL 3x3	Clear	Acrylic	3 x 3	35-3/4 x 35-3/4	0.125
61938	K12 LENS 0.110 ACR CL 3.5x4	Clear	Acrylic	3.5 x 4	44 x 47-1/4	0.110
12398	K12 LENS 0.125 ACR CL 4x4	Clear	Acrylic	4 x 4	47-3/4 x 47-3/4	0.125
59070	K12 LENS 0.125 ACR CL 4x8	Clear	Acrylic	4 x 8	48 x 96	0.125
K15 Prismatic						
35579	K15 LENS 0.200 ACR CL 1x4	Clear	Acrylic	1 x 4	11-3/4 x 47-3/4	0.200
59091	K15 LENS 0.200 ACR CL 2x4	Clear	Acrylic	2 x 4	23-3/4 x 47-3/4	0.200
K19 Prismatic						
35029	K19 LENS 0.160 ACR CL 1x4	Clear	Acrylic	1 x 4	11-3/4 x 47-3/4	0.160
35581	K19 LENS 0.160 ACR CL 2x2	Clear	Acrylic	2 x 2	23-3/4 x 23-3/4	0.160
59094	K19 LENS 0.160 ACR CL 2x4	Clear	Acrylic	2 x 4	23-3/4 x 47-3/4	0.160
K23 Prismatic						
59125	K23 LENS 0.100 ACR CL 2x4	Clear	Acrylic	2 x 4	23-3/4 x 47-3/4	0.100

Louver

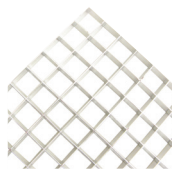


Paracube 1



Paracube 2

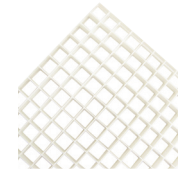
Order code	Description	Colour	Material	Nominal size (ft)	Actual size (in.)	Cell size (in.)
Paracube 1						
35413	PARACUBE 1 ACR SLV 2x4 FLG	Silver	Acrylic	2.0 x 4.0	22-1/2 x 46-1/2	1/2 x 1/2 x 3/8
10395	PARACUBE 1 STY SLV 2x4 FLG	Silver	Styrene	2.0 x 4.0	22-1/2 x 46-1/2	1/2 x 1/2 x 3/8
12751	PARACUBE 1 ACR SLV 2x4 TRM	Silver	Acrylic	2.0 x 4.0	23-3/4 x 47-3/4	1/2 x 1/2 x 3/8
59105	PARACUBE 1 ACR SLV 2x4 GRD	Silver	Acrylic	2.0 x 4.0	23-3/4 x 47-3/4	5/8 x 5/8 x 3/8
12752	PARACUBE 1 STY SLV 2x4 TRM	Silver	Styrene	2.0 x 4.0	23-3/4 x 47-3/4	1/2 x 1/2 x 3/8
59064	PARACUBE 1 STY SLV 2x4 GRD	Silver	Styrene	2.0 x 4.0	23-3/4 x 47-3/4	1/2 x 1/2 x 3/8
35410	PARACUBE 1 STY SLV 2x2 FLG	Silver	Styrene	2.0 x 2.0	22-1/2 x 22-1/2	1/2 x 1/2 x 3/8
35409	PARACUBE 1 ACR SLV 2x2 GRD	Silver	Acrylic	2.0 x 2.0	23-3/4 x 23-3/4	1/2 x 1/2 x 3/8
35412	PARACUBE 1 STY SLV 2x2 GRD	Silver	Styrene	2.0 x 2.0	23-3/4 x 23-3/4	1/2 x 1/2 x 3/8
35406	PARACUBE 1 STY SLV 1x4 FLG	Silver	Styrene	1.0 x 4.0	10-1/2 x 46-1/2	1/2 x 1/2 x 3/8
35404	PARACUBE 1 ACR SLV 1x4 GRD	Silver	Acrylic	1.0 x 4.0	11-3/4 x 47-3/4	1/2 x 1/2 x 3/8
10394	PARACUBE 1 STY SLV 1x4 GRD	Silver	Styrene	1.0 x 4.0	11-3/4 x 47-3/4	1/2 x 1/2 x 3/8
Paracube 2						
35426	PARACUBE 2 STY SLV 2x2 FLG	Silver	Styrene	2.0 x 2.0	22-1/2 x 22-1/2	1-1/2 x 1-1/2 x 1
12755	PARACUBE 2 ACR SLV 1x4 FLG ESP	Silver	Acrylic	1.0 x 4.0	10-1/2 x 46-1/2	1-1/2 x 1-1/2 x 1
35424	PARACUBE 2 STY SLV 1x4 FLG	Silver	Styrene	1.0 x 4.0	10-1/2 x 46-1/2	1-1/2 x 1-1/2 x 1



Paracube 5



Decorative Louvers



Eggcrate

Order code	Description	Colour	Material	Nominal size (ft)	Actual size (in.)	Cell size (in.)
Paracube 5						
35495	PARACUBE 5 STY SLV 2x4 FLG	Silver	Styrene	2.0 x 4.0	22-1/2 x 46-1/2	3/4 x 3/4 x 3/8
Decorative Louvers						
59126	HEXALITE STY SLV 2x4 GRD 1/2x1/2x1/2	Silver	Styrene	2.0 x 4.0	23-3/4 x 47-3/4	1/2 x 1/2 x 1/2
Eggcrate						
35443	EGGCRA TE ACR WH 1x4 1/2x1/2x1/2	White	Acrylic	1.0 x 4.0	11-3/4 x 47-3/4	1/2 x 1/2 x 1/2
35449	EGGCRA TE STY WH 1x4 1/2x1/2x3/8	White	Styrene	1.0 x 4.0	11-3/4 x 47-3/4	1/2 x 1/2 x 3/8
35444	EGGCRA TE STY WH 1x4 1/2x1/2x1/2	White	Styrene	1.0 x 4.0	11-3/4 x 47-3/4	1/2 x 1/2 x 1/2
35629	EGGCRA TE STY WH 2x2 1/2x1/2x3/8	White	Styrene	2.0 x 2.0	23-3/4 x 23-3/4	1/2 x 1/2 x 3/8
35627	EGGCRA TE ACR WH 2x2 1/2x1/2x1/2	White	Acrylic	2.0 x 2.0	23-3/4 x 23-3/4	1/2 x 1/2 x 1/2
59120	EGGCRA TE STY BL 2x4 1/2x1/2x3/8	Black	Styrene	2.0 x 4.0	23-3/4 x 47-3/4	1/2 x 1/2 x 3/8
59112	EGGCRA TE STY SLV 2x4 1/2x1/2x3/8	Silver	Styrene	2.0 x 4.0	23-3/4 x 47-3/4	1/2 x 1/2 x 3/8
59113	EGGCRA TE STY WH 2x4 1/2x1/2x3/8	White	Styrene	2.0 x 4.0	23-3/4 x 47-3/4	1/2 x 1/2 x 3/8
59115	EGGCRA TE ACR WH 2x4 1/2x1/2x1/2	White	Acrylic	2.0 x 4.0	23-3/4 x 47-3/4	1/2 x 1/2 x 1/2
59116	EGGCRA TE STY WH 2x4 1/2x1/2x1/2	White	Styrene	2.0 x 4.0	23-3/4 x 47-3/4	1/2 x 1/2 x 1/2
59110	EGGCRA TE ALM ML 2x4 1/2x1/2x1/2	Mill	Aluminum	2.0 x 4.0	23-3/4 x 47-3/4	1/2 x 1/2 x 1/2
59111	EGGCRA TE ALM WH 2x4 1/2x1/2x1/2	White	Aluminum	2.0 x 4.0	23-3/4 x 47-3/4	1/2 x 1/2 x 1/2