

# HEAVY DUTY MULTIPOLE CONNECTORS



## Hoods

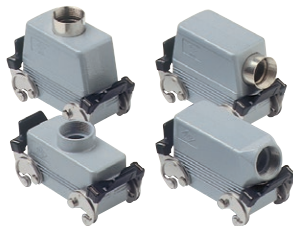
### Series E 16 poles +⊕



Pg	Part #	Pg	NPT Part #	NPT	Hoods
	<b>ESEP16D5</b>	21	<b>ESEP16D11</b>	3/4"	four pegs, side entry
	<b>ESTP16D5</b>	21	<b>ESTP16D11</b>	3/4"	four pegs, side entry, high construction
	<b>ESTP16D6</b>	29	<b>ESTP16D12</b>	1"	four pegs, side entry, high construction
	<b>ETEP16D5</b>	21	<b>ETEP16D11</b>	3/4"	four pegs, top entry
	<b>ETTP16D5</b>	21	<b>ETTP16D11</b>	3/4"	four pegs, top entry, high construction
	<b>ETTP16D6</b>	29	<b>ETTP16D12</b>	1"	four pegs, top entry, high construction
	<b>EFEP16D5*</b>	21	<b>EFEP16D11*</b>	3/4"	four pegs, front entry, high construction
	<b>ECC16D5</b>	21	<b>ECC16D11</b>	3/4"	double levers, top entry, cable coupler
	<b>ECC16D6</b>	29	<b>ECC16D12</b>	1"	double levers, top entry, cable coupler, high construction

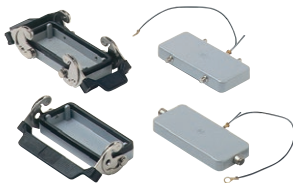


	<b>ESEP16S5</b>	21	<b>ESEP16S11</b>	3/4"	two pegs, side entry
	<b>ESTP16S5</b>	21	<b>ESTP16S11</b>	3/4"	two pegs, side entry, high construction
	<b>ESTP16S6</b>	29	<b>ESTP16S12</b>	1"	two pegs, side entry, high construction
	<b>ETEP16S5</b>	21	<b>ETEP16S11</b>	3/4"	two pegs, top entry
	<b>ETTP16S5</b>	21	<b>ETTP16S11</b>	3/4"	two pegs, top entry, high construction
	<b>ETTP16S6</b>	29	<b>ETTP16S12</b>	1"	two pegs, top entry, high construction
	<b>ECC16S5</b>	21	<b>ECC16S11</b>	3/4"	single lever, top entry, cable coupler
	<b>ECC16S6</b>	29	<b>ECC16S12</b>	1"	single lever, top entry, cable coupler, high construction



	<b>ESEL16D5</b>	21	<b>ESEL16D11</b>	3/4"	double levers, side entry
	<b>ESTL16D5</b>	21	<b>ESTL16D11</b>	3/4"	double levers, side entry, high construction
	<b>ESTL16D6</b>	29	<b>ESTL16D12</b>	1"	double levers, side entry, high construction
	<b>ETEL16D5</b>	21	<b>ETEL16D11</b>	3/4"	double levers, top entry
	<b>ETTL16D5</b>	21	<b>ETTL16D11</b>	3/4"	double levers, top entry, high construction
	<b>ETTL16D6</b>	29	<b>ETTL16D12</b>	1"	double levers, top entry, high construction

## Covers



### Series E 16 poles +⊕

Part #	Covers
<b>EP16DL</b>	four pegs (for housings with double levers)
<b>EP16SL</b>	two pegs (for housings with single lever)
<b>EL16DL</b>	double levers (for hoods with four pegs)
<b>EL16SL</b>	single lever (for hoods with two pegs)

\* special order, consult factory for delivery

For exact dimensions, go to [www.techspan.ca](http://www.techspan.ca)

**B**