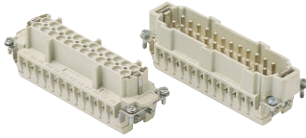


HEAVY DUTY MULTIPOLE CONNECTORS



Inserts

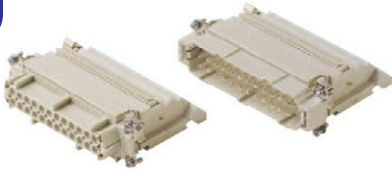
B



Series E **24 poles + ⊕ 16A max - 600V**

Part #	Screw Terminal with wire protection
E24RS	female inserts
E24PS	male inserts
Part #	Cage Clamp
E24RG	female inserts
E24PG	male inserts

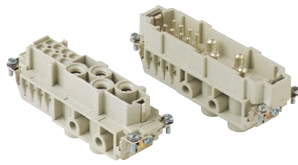
Wire conductor range: 20 ÷ 12 AWG



Series E-TB **24 poles + ⊕ 16A max - 600V**

Part #	Terminal Block Inserts Screw Terminal Connection
E24RS-TBL	female inserts with female contacts (left mounting)
E24RS-TBR	female inserts with female contacts (right mounting)
E24PS-TBL	male inserts with male contacts (left mounting)
E24PS-TBR	male inserts with male contacts (right mounting)

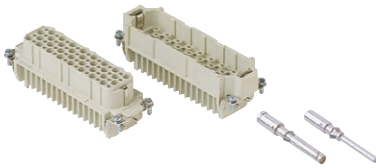
Wire conductor range: 18 ÷ 14 AWG



Series MP **4 poles + 8 poles ⊕ 80A max - 600V + 16A max - 600V**

Part #	Screw Terminal
MP4/8RS	female inserts
MP4/8PS	male inserts

Wire conductor range: 80A/12 ÷ 6 AWG / 16A/18 ÷ 14 AWG



Series D **64 poles + ⊕ 10A max - 600V**

Part #	Crimp Terminal
D64RC	female inserts
D64PC	male inserts

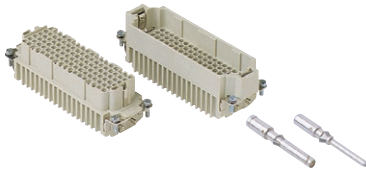
Wire conductor range: 22 ÷ 14 AWG
10A Crimp Contacts must be ordered separately, see page B-28



Series D-TB **64 poles + ⊕ 10A max - 600V**

Part #	Terminal Block Inserts Screw Terminal Connection
D64RS-TBL	female inserts with female contacts (left mounting)
D64RS-TBR	female inserts with female contacts (right mounting)
D64PS-TBL	male inserts with male contacts (left mounting)
D64PS-TBR	male inserts with male contacts (right mounting)

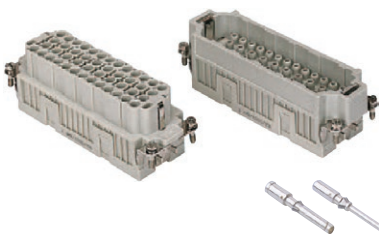
Wire conductor range: 18 ÷ 14 AWG



Series DD **108 poles + ⊕ 10A max - 600V**

Part #	Crimp Terminal
DD108RC	female inserts
DD108PC	male inserts

Wire conductor range: 22 ÷ 14 AWG
10A Crimp Contacts must be ordered separately, see page B-28



Series EQ **46 poles + ⊕ 16A max - 600V**

Part #	Inserts, Crimp Connections
EQ46RC	female inserts for female contacts
EQ46PC	male inserts for male contacts

Wire conductor range: 20 ÷ 12 AWG
16A Crimp Contacts must be ordered separately, see page B-28
All inserts listed above fit into bases on page B-21 and hoods on page B-22
For exact dimensions, go to www.techspan.ca