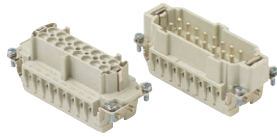


## HEAVY DUTY MULTIPOLE CONNECTORS



### Inserts

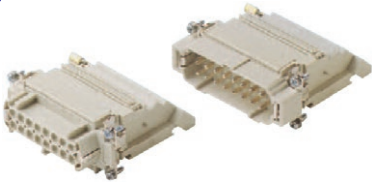
#### Series E **16 poles + ⊕ 16A max - 600V**



Part #	Screw Terminal with wire protection
E16RS	female inserts
E16PS	male inserts
Part #	Cage Clamp
E16RG	female inserts
E16PG	male inserts

Wire conductor range: 20 ÷ 12 AWG

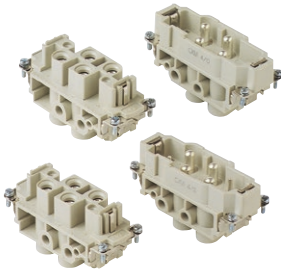
#### Series E-TB **16 poles + ⊕ 16A max - 600V**



Part #	Terminal Block Inserts Screw Terminal Connection
E16RS-TBL	female inserts with female contacts (left mounting)
E16RS-TBR	female inserts with female contacts (right mounting)
E16PS-TBL	male inserts with male contacts (left mounting)
E16PS-TBR	male inserts with male contacts (right mounting)

Wire conductor range: 18 ÷ 14 AWG

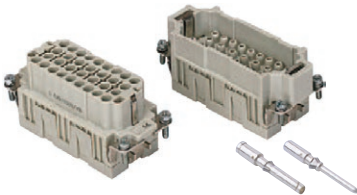
#### Series MP **4 poles + ⊕ 80A max - 600V** **4 + 2 poles + ⊕ 80A max - 600V + 16A max - 600V**



Part #	Screw Terminal
MP4/0RS	female inserts
MP4/0PS	male inserts
MP4/2RS	female inserts
MP4/2PS	male inserts

Wire conductor range: 80A/12 ÷ 6 AWG / 16A/18 ÷ 14 AWG

#### Series EQ **32 poles + ⊕ 16A max - 600V**

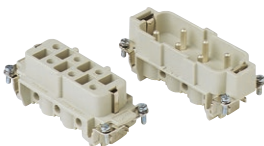


Part #	Inserts, Crimp Connections
EQ32RC	female inserts for female contacts
EQ32PC	male inserts for male contacts

16A Crimp Contacts must be ordered separately, see page B-28

Wire conductor range: 20 ÷ 12 AWG

#### Series S **6 poles + ⊕ 35A max - 600V**



Part #	Screw Terminal
S06RS	female inserts
S06PS	male inserts

Wire conductor range: 16 ÷ 10 AWG

#### Series D **40 poles + ⊕ 10A max - 600V**



Part #	Crimp Terminal
D40RC	female inserts
D40PC	male inserts

Wire conductor range: 22 ÷ 14 AWG

10A Crimp Contacts must be ordered separately, see page B-28

All inserts listed above fit into bases on page B-18 and hoods on page B-19

For exact dimensions, go to [www.techspan.ca](http://www.techspan.ca)

B