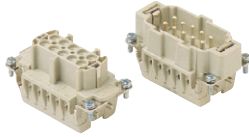


HEAVY DUTY MULTIPOLE CONNECTORS



Inserts



Series E 10 poles + ⊕ 16A max - 600V

Part #	Screw Terminal with wire protection
E10RS	female inserts
E10PS	male inserts

Part #	Cage Clamp
E10RG	female inserts
E10PG	male inserts

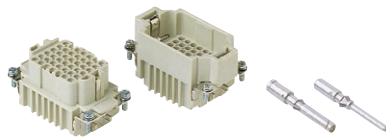
Wire conductor range: 20 ÷ 12 AWG



Series E-TB 10 poles + ⊕ 16A max - 600V

Part #	Terminal Block Inserts Screw Terminal Connection
E10RS-TBL	female inserts with female contacts (left mounting)
E10RS-TBR	female inserts with female contacts (right mounting)
E10PS-TBL	male inserts with male contacts (left mounting)
E10PS-TBR	male inserts with male contacts (right mounting)

Wire conductor range: 18 ÷ 14 AWG

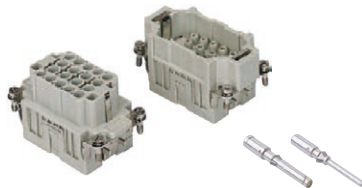


Series DD 42 poles + ⊕ 10A max - 600V

Part #	Crimp Terminal
DD42RC	female inserts
DD42PC	male inserts

Wire conductor range: 22 ÷ 14 AWG

10A Crimp Contacts must be ordered separately, see page B-28

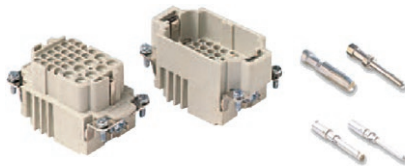


Series EQ 18 poles + ⊕ 16A max - 600V

Part #	Inserts, Crimp Connections
EQ18RC	female inserts for female contacts
EQ18PC	male inserts for male contacts

Wire conductor range: 20 ÷ 12 AWG

16A Crimp Contacts must be ordered separately, see page B-28



Series EA 8 poles (16A max-400V) + 24 poles (10A max-250V) + ⊕

Part #	Inserts, Crimp Connections
EA8/24RC	female inserts for female contacts
EA8/24PC	male inserts for male contacts

Wire conductor range: 10A/22 ÷ 14 AWG, 16A/20 ÷ 12 AWG

16A and 10A Crimp Contacts must be ordered separately, see page B-28

All inserts listed above fit into bases on page B-14 and hoods on page B-15

For exact dimensions, go to www.techspan.ca

B