

Primers

Multi-Purpose Spray – On PVC Cement



No Waste • Sprays on in seconds • Fast setting

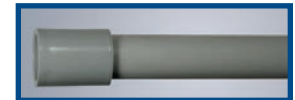
- Equivalent to a medium bodied low-VOC, quick setting clear cement
- No more spills
- Reuse can until empty
- Installation: 10 to 26°C
Storage: 1 to 48°C
- Meets ASTM D-2564
- 3 year shelf life
- One 120 ml can is equivalent to 120 ml of non-aerosol PVC cement*

*Equivalence is subject to usage and will vary



Applications

- For use up to 4 in. dia. Sch 40 PVC electrical conduit
- For use with PVC Raceways only. Not recommended for use on water, sewer, natural gas, compressed gas or air connections.



Temperature Range	Recommended Set Time		
	Pipe Sizes 1/2 in. to 1-1/4 in.	Pipe Sizes 1-1/2 in. to 2 in.	Pipe Sizes 2-1/2 in. to 4 in.
15 to 37.7°C	2 min.	5 min.	30 min.
4 to 15°C	5 min.	10 min.	2 hrs.
-17 to 4°C	10 min.	15 min.	12 hrs.

Recommended set time may vary depending on humidity

Cat. No.	Size	Ctn. Qty.	Ctn. Wt. (lb.)
VC9AC5C	120 ml	12	5.6