

T8

14T8/COR/48-840/IF21/G/DIM 10/1

Our TLEDs are available in InstantFit (Type A / Type C) or MainsFit (Ballast bypass / Type B) versions. The InstantFit lamps work on a broad variety of ballasts and LED drivers. Only InstantFit has over 15,000 lamp & ballast combinations delivering even light output, energy savings and a long lifetime. Our MainsFit products feature a double-ended design, simplifying installation while a proprietary safety circuit minimizes a shock risk. Lamp sizes range from 2-foot to 8-foot and U-bend with a variety of lumen outputs.

Product data

General Information	
Cap-Base	G13 [Medium Bi-Pin Fluorescent]
EU RoHS compliant	Yes
Nominal Lifetime (Nom)	50000 h
Switching Cycle	50000X
Light Technical	
Color Code	841 [CCT of 4100K (841)]
Beam Angle (Nom)	240 °
Luminous Flux (Nom)	2100 lm
Color Designation	Cool White (CW)
Correlated Color Temperature (Nom)	4000 K
Luminous Efficacy (rated) (Nom)	150.00 lm/W
Color Consistency	<6
Color Rendering Index (Nom)	82
LLMF At End Of Nominal Lifetime (Nom)	70 %
Operating and Electrical	
Input Frequency	25000-105000 Hz
Power (Rated) (Nom)	14 W

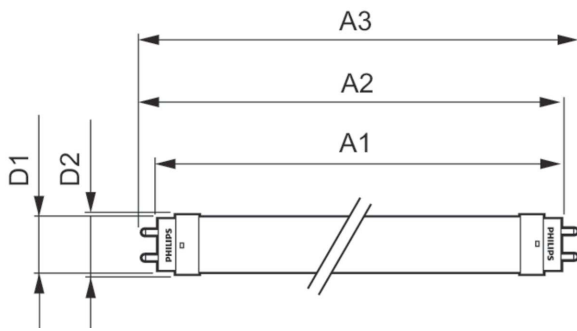
Lamp Current (Max)	260 mA
Lamp Current (Min)	100 mA
Starting Time (Nom)	0.5 s
Warm Up Time to 60% Light (Nom)	0.5 s
UL Type	Type A - works on ballast
Power Factor (Nom)	0.9
Voltage (Nom)	120-277, 347 V
Temperature	
T-Ambient (Max)	45 °C
T-Ambient (Min)	-20 °C
T-Storage (Max)	65 °C
T-Storage (Min)	-40 °C
T-Case Maximum (Nom)	50 °C
Controls and Dimming	
Dimmable	Yes
Mechanical and Housing	
Bulb Material	Glass

T8

Product Length	1200 mm
Bulb Shape	Tube, double-ended
Approval and Application	
Energy Saving Product	Yes
Approval Marks	UL certificate RoHS compliance DLC compliance
Energy Consumption kWh/1000 h	- kWh
Energy Certifications	DLC Standard

Product Data	
Order product name	14T8/COR/48-840/IF21/G/DIM 10/1
EAN/UPC - Product	046677453251
Order code	470112
Numerator - Quantity Per Pack	1
Numerator - Packs per outer box	10
Material Nr. (12NC)	929001343234
Net Weight (Piece)	0.215 kg

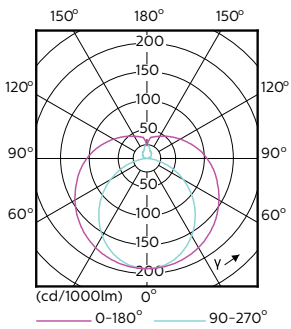
Dimensional drawing



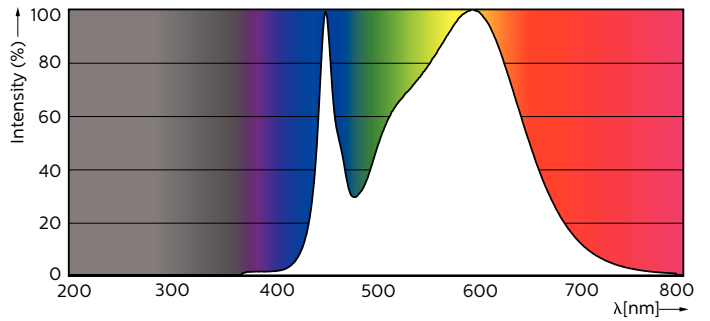
14T8 PRO LED/48-4000 IF G 10/1

Product	D1	D2	A1	A2	A3
14T8/COR/48-840/IF21/G/DIM 10/1	25.7 mm	28 mm	1198 mm	1205 mm	1212 mm

Photometric data

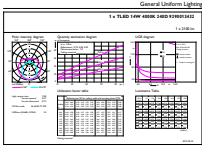


LEDtube 1200mm 17W G13 2100lm



LEDtube PRO 1200mm 14W G13 840 2100lm

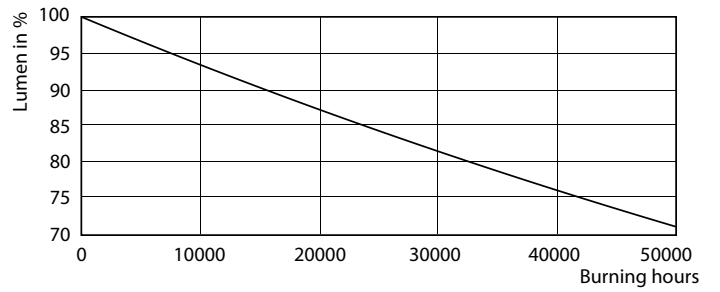
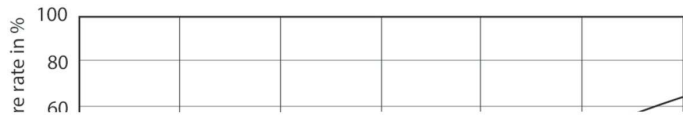
Photometric data



General Information 41 Photo Lighting 81 Page 17

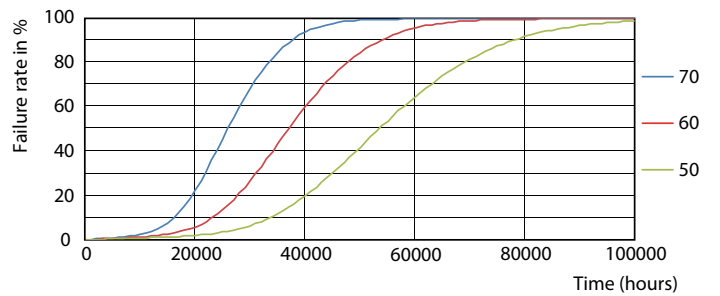
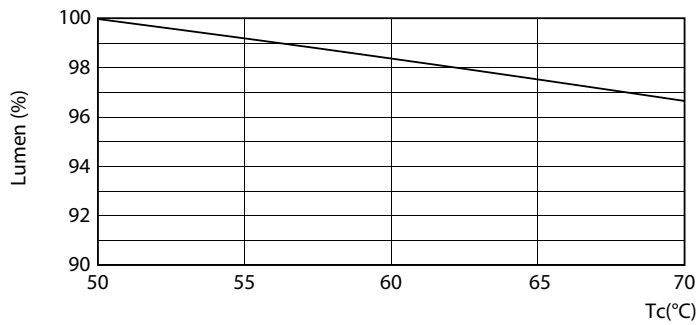
LEDtube PRO 1200mm 14W G13 840 2100lm

Lifetime



LEDtube PRO 1200mm 14W G13 2000lm

LEDtube PRO 1200mm 14W G13 2000lm

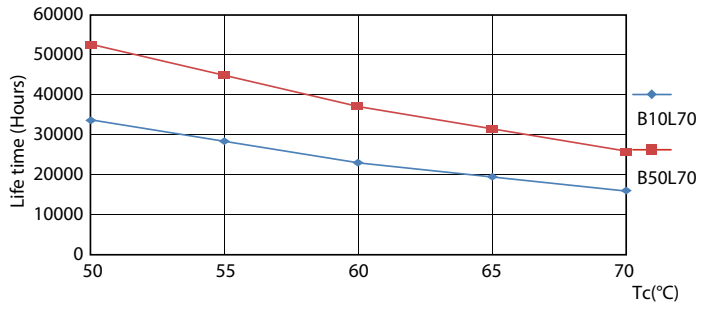


12W G13

12W G13

T8

Lifetime



12W G13

