

# LED Strip Lights

## SL-RGB5LO

- 5 Meter / 16.4 Feet flexible LED tape/ 60 LEDs/M
- Dimensions: 10mm / 1/2" wide/ 4.75mm / 3/16" tall
- IP65 Rated for indoor or outdoor use
- Beam angle: 120°
- Lifetime: 30000H
- Wattage : 12 Watt/meter
- Operating Temperature -20°C to 45°C
- Voltage: 12V DC Input voltage
- 20 colours/ 4 levels of brightness/ 4 modes
- White finish with clear silicone coating
- Cuttable every 50mm / 2" (PVC glue and termination caps sold separately)
- Mounted with 3M backing/ that adheres to any surface. (Additional clips sold separately/ transformer included)
- Warranty: 3 years



## RGB-Puck Light

- LED RGB Puck Light - Recessed Mounted + Surface Mounted
- Diameter : 2-3/4" height : 5/8"
- Beam angle: 110
- Low profile design/ minimal heat emission
- Formed fixture
- Available in 16 colours and 4 play modes
- last colour memory functions
- Dimmable
- Reduced maintenance costs with LED components
- Suitable for household and residential applications
- Available in blister pack that includes 3 puck lights, 1 Remote, 1 Driver



Remote

- RGB 24 keys wireless remote



Power Supply

- Power supply code included



Controller

- 16 static colour, 4 colour changing mode

## SL-RGB 15M

- Watt : 8-10 W per meter
- Voltage: 120V
- Lumens: 780
- Dimensions : 7x14 mm
- Dimmable : Yes
- Mount : Clip or channel
- Lifetime: 50000H
- Warranty: 3 years

\* Available in 16 colours and 4 play modes last colour memory function

\* Comes with Remote ,Controller and clips



## SL-RGB 50M

- Roll Size Available: 50M
- Voltage: 110-130V AC
- Watts: 10 watts per Meter
- Light Source: 5050 SMD
- Size Dimensions: 7.5mm(H)x15(W)mm
- 0.5 cut mark/ unit
- IP67
- Dimmable: yes
- Warranty: 2 years



Accessories SOLD separately



Remote50M - SLRGB

Transformer+Remote for SL-RGB50M 1500W can afford 50m120V or100m220v



RGB 50M - End Cap

- End Cap for RGB



RGB50M-CONN (L)

- L Connector for RGB



RGB50M-CONN

- Straight Connector for RGB



Remote 25M - SLRGB

Transformer+Remote for SL-RGB25M 750W can afford 25m120V or50m220v



Mounting Clips

- Mounting Clips for RGB



RGB50M-CONN (T)

- T Connector for RGB

## SL-25M 3K

## SL-25M 5K

- 25 Meter length of flexible LED with 1500 LEDs
- 4.8W/M
- Light Spread: 140°
- Voltage: 12V DC
- Colour Temp.: 3000K/ 5000K
- Lumens: 318 - 420
- Size: 5000 x 8 x 3 mm
- Double sided tape on back for easy installation
- Should be cut to max 5M lengths for maximum brightness
- IP22 for indoor
- Warranty: 3 years



Accessories SOLD separately



SL-CONN

- Connectors for Strip Lights with 15cm wire



SL-CONN (TWO)

- Connectors for Strip Lights  
- Double side snapon connector with 15cm wire



SL-CONN (SNAP)

- Connectors for Strip Lights  
- Double side snap on connector

## SL-50M 3K

## SL-50M 5K

## SL-50M Blue

- 10W/M
- Light Spread: 140°
- Voltage: 110 V AC-130V AC
- Colors: 3000K, 5000K, Blue
- Lumens: 780/m
- 50000 hours life time
- Size: 7 x14 mm
- 0.5 cutmark/unit
- IP67 for indoor and outdoor
- Warranty: 2 years



Accessories SOLD separately



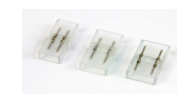
SL50M-CORD

- CORD for SL50M



SL50M-CONN (T)

- T Connector for SL50M



SL50M-CONN

- Connector for SL50M



SL50M-CONN (L)

- L Connector for SL50M



Mounting Clips

- Mounting Clips for SL50M

# Drivers

## OT-08D

- Constant voltage
- 0.68A
- Input: 100-130V AC
- Output: 12V DC
- Maximum Wattage: 8W
- Dimmable
- Suitable for dry or damp location/ IP20
- Suitable for LED Lighting and moving sign applications and others
- Class 2 Driver



## OT-24D

- Constant voltage
- 2A
- Input: 100-130V AC
- Output: 12V DC
- Maximum Wattage: 24W
- Dimmable
- Suitable for dry or damp location/ IP20
- Suitable for LED Lighting and moving sign applications and others
- Class 2 Driver



## OT-60D

- Constant voltage
- 5A
- Input: 108-127V AC
- Output: 12V DC
- Maximum Wattage: 60W
- Dimmable
- Suitable for dry or damp location/ IP20
- Suitable for LED Lighting and moving sign applications and others
- Class 2 Driver



## OT-96D

- 96 Watt
- Dimmable
- Input voltage: 100-240V AC
- Box Dimensions : 240x108x39 mm
- Class 2 Driver



## OT-347

- 12 Watt Driver
- Dimensions : 82x82x33 mm
- Dimmable : No
- Class 2 Driver



## OT-12150-TDWJ

- Voltage: 12V
- Wattage : 150
- High Power Factor PF>0.95
- Min.Load 10% only
- PWM output design
- 5 Years warranty
- Work for 100-277VAC input / 120V Dimmers and 277V dimmers/ allows for flicker free dimming down to 1%.
- Match with triac/electronic low voltage/ magnetic low voltage dimmers.



## OT-24150-TDWJ

- Voltage: 24V
- Wattage : 150
- High Power Factor PF>0.95
- Min.Load 10% only
- PWM output design
- 5 Years warranty
- Work for 100-277VAC input / 120V Dimmers and 277V dimmers/ allows for flicker free dimming down to 1%.
- Match with triac/electronic low voltage/ magnetic low voltage dimmers.



## OT-12200-TDWJ

- Voltage: 12V
- Wattage : 200
- High Power Factor PF>0.95
- Min.Load 10% only
- PWM output design
- 5 Years warranty
- Work for 100-277VAC input / 120V Dimmers and 277V dimmers/ allows for flicker free dimming down to 1%.
- Match with triac/electronic low voltage/ magnetic low voltage dimmers.



## OT-24200-TDWJ

- Voltage: 24V
- Wattage : 200
- High Power Factor PF>0.95
- Min.Load 10% only
- PWM output design
- 5 Years warranty
- Work for 100-277VAC input / 120V Dimmers and 277V dimmers/ allows for flicker free dimming down to 1%.
- Match with triac/electronic low voltage/ magnetic low voltage dimmers.



## OT-12300-TDWJ

- Voltage: 12V
- Wattage : 300
- High Power Factor PF>0.95
- Min.Load 10% only
- PWM output design
- 5 Years warranty
- Work for 100-277VAC input / 120V Dimmers and 277V dimmers/ allows for flicker free dimming down to 1%.
- Match with triac/electronic low voltage/ magnetic low voltage dimmers.



## OT-24300-TDWJ

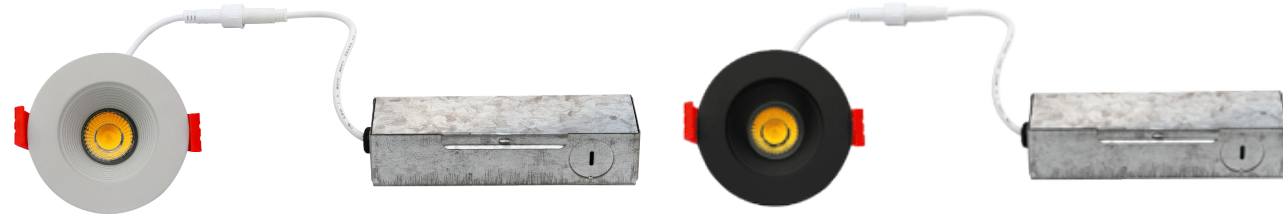
- Voltage: 24V
- Wattage : 300
- High Power Factor PF>0.95
- Min.Load 10% only
- PWM output design
- 5 Years warranty
- Work for 100-277VAC input / 120V Dimmers and 277V dimmers/ allows for flicker free dimming down to 1%.
- Match with triac/electronic low voltage/ magnetic low voltage dimmers.



## 2" LED Slim Lights

*Slim 2-3K WH*      *Slim 2-3K BK*  
*Slim 2-5K WH*      *Slim 2-5K BK*

- 2" Round LED Slim light with driver in connection box
- Rated for damp locations
- IC rated for direct contact with insulation
- Durable aluminum body
- Dimmable up to 90% with most household dimmers
- Can be installed directly into drywall
- Class 2 transformer in junction box is included
- Wattage: 8W
- Lumens: 550
- Beam angle: 36°
- Dimensions: 3-1/8" diameter 2-3/4" depth (round)
- Cutout: 2-5/8"
- Warranty: 5 years
- Lifetime: 50000H
- Finish: White (WH) / Black (BK)
- Colour Temp.: 3000K (Warm White) / 5000K (Cool White)



*Disc 2S-3K WH*    *Disc 2S-3K BK*    *Disc 2S-3K SN*    +    *OT-Slim 2/3 (Driver)*  
*Disc 2S-5K WH*    *Disc 2S-5K BK*    *Disc 2S-5K SN*

- 2" Square LED Slim light with driver in connection box
- Rated for damp locations
- IC rated for direct contact with insulation
- Durable aluminum body
- Dimmable up to 90% with most household dimmers
- Can be installed directly into drywall
- Class 2 transformer in junction box is included
- Wattage: 8W
- Lumens: 550
- Beam angle: 36°
- Dimensions: 3-1/8" x 3-1/8" x 2-3/4" (square)
- Cutout: 2-5/8"
- Warranty: 5 years
- Lifetime: 50000H
- Finish: White (WH) / Black (BK) / Satin Nickel (SN)
- Colour Temp.: 3000K (Warm White) / 5000K (Cool White)



## 3" LED Slim Lights

*DISC3-3K WH*    +    *OT-Slim 2/3 (Driver)*  
*DISC3-5K WH*

- 3" Round LED Slim light with driver in connection box
- Suitable for damp locations where not directly exposed to rain or snow
- IC rated for direct contact with insulation
- Dimmable up to 90% with most household dimmers
- 120 degree beam angle
- Ceiling cutout size: 78mm
- Wattage: 8W
- Lumens: 500
- Warranty: 5 years
- Lifetime: 50000H
- Finish: White (WH)
- Colour Temp.: 3000K (Warm White) / 5000K (Cool White)



## 3" Gimbal LED Slim Lights

*Slim 3Gim-3K SN*    *Slim 3Gim-3K ORB*    |    *DISC 3Gim-3K WH*    +    *OT-Slim 2/3 (Driver)*  
*Slim 3Gim-4K SN*    *Slim 3Gim-4K ORB*    |    *DISC 3Gim-5K WH*  
*Slim 3Gim-5K SN*    *Slim 3Gim-5K ORB*    |    *DISC 3Gim-4K WH*

- Recessed 3" Gimbal Round LED Slim light with driver in connection box
- Rated for damp locations
- IC rated for direct contact with insulation
- Durable aluminum body
- Dimmable upto 90% with most household dimmers
- Can be installed directly into drywall
- Class 2 transformer in junction box is included
- Wattage: 8W
- Lumens: 550
- Beam angle: 120°
- Dimensions: 3-1/2" diameter 1-3/4" height
- Cutout: 2-3/4"
- Warranty: 5 years
- Lifetime: 50000H
- Finish: White (WH) or Satin Nickel (SN) / Oil Rubbed Bronze (ORB)
- Colour Temp.: 3000K (Warm White) / 4000K (Natural White) / 5000K (Cool White)



## 3" Regressed Lights

*DISC-RG3-3K WH*    +    *OT-Slim 2/3 (Driver)*  
*DISC-RG3-5K WH*

- Regressed 3" LED light
- Triac dimming range 10-100%
- This fixture is compatible with industry standard TRIC/ ELV drivers
- IC rated when used with recessed housing rated for direct contact with insulation
- Durable aluminum construction
- Wattage: 8W
- Lumens: 550
- Beam angle: 38°
- CRI: 80
- Dimensions: 5" diameter 2-1/8" height
- Cutout: 3-3/8"
- Warranty: 5 years
- Lifetime: 50000H
- Finish: White (WH)
- Colour Temp.: 3000K (Warm White) or 5000K (Cool White)

