

FEATURES & SPECIFICATIONS

INTENDED USE — Ideal one-for-one replacement of conventional lighting systems such as HID and fluorescent. For use in light Industrial applications such as, warehousing and other large indoor spaces with mounting heights ranging from 10' – permitted. **Certain airborne contaminants can diminish integrity of acrylic and LED's.** [Click here for Acrylic Environmental Compatibility table for suitable uses.](#)

Certain airborne contaminants may adversely affect the functioning of LEDs and other electronic components, depending on various factors such as concentrations of the contaminants, ventilation, and temperature at the end-user location. [Click here for a list of substances that may not be suitable for interaction with LEDs and other electronic components.](#)

CONSTRUCTION — Extruded aluminum channels enable superior thermal performance. Glare Control acrylic lens diffuses light source and reduces glare while protecting LEDs. Lens meets DLC 5.1 standards for UGR (Unified Glare Rating).

ELECTRICAL — 70% lumen maintenance at > 100,000 hours. Thermally protected driver standard with 0-10V dimming. Luminaire surge protection level: designed to withstand up to 6kV/3kA per ANSI C82.77-5-2015 Multi-volt driver, 120-277V standard.

INSTALLATION — Compact Pro™ package includes V-hanger hardware kit with 2- V-hanger brackets and 2- 36" chain lengths. Fixture is suitable for mounting by chain, cable, surface-mount bracket, or hook monopoint. Designed for use in ambient temperatures ranging from -40°C to 55°C when suspended 18" off ceiling. Surface mount to 45°C ambient operation.

LISTINGS — CSA listed. Damp location listed.

DesignLights Consortium™ (DLC) Premium qualified product. Not all versions of this product may be DLC Premium qualified. Please check the DLC Qualified Products List at www.designlights.org/QPL to confirm which versions are qualified.

WARRANTY — 5-year limited warranty. Complete warranty terms located at: www.acuitybrands.com/support/warranty/terms-and-conditions

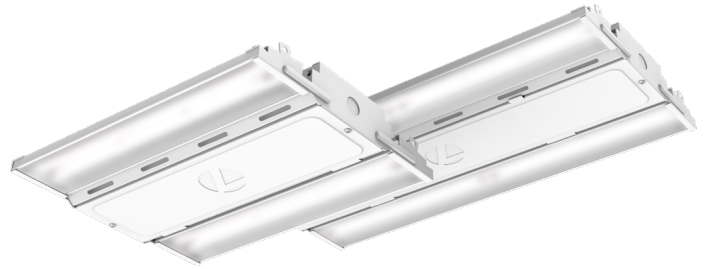
Note: Actual performance may differ as a result of end-user environment and application. All values are design or typical values, measured under laboratory conditions at 25 °C. Specifications subject to change without notice.

Catalog Number
Notes
Type

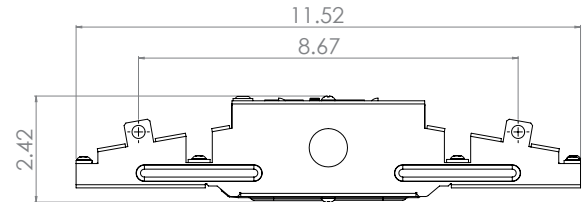
LED High Bay

COMPACT PRO™

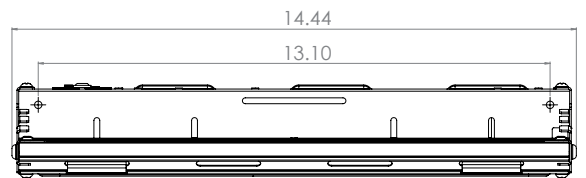
12,000 through 30,000 Lumens



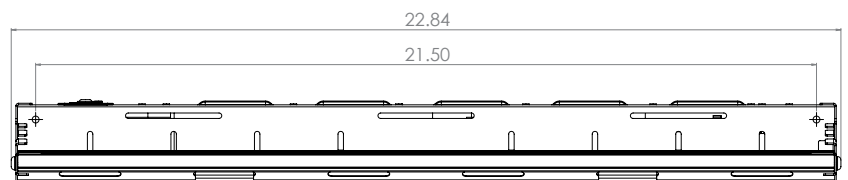
Standard Part Number	Stock Part Number	Stock Part Number CI Code	DLC Product ID	DLC Premium?
CPHB 12000LM SEF GCL MD MVOLT GZ10 40K 80CRI DWH	CPHB 12LM MVOLT 40K	*268SAH	PAMXQBT8	Yes
CPHB 12000LM SEF GCL MD MVOLT GZ10 50K 80CRI DWH	CPHB 12LM MVOLT 50K	*2681J0	POQ23DMQ	Yes
CPHB 15000LM SEF GCL MD MVOLT GZ10 40K 80CRI DWH	CPHB 15LM MVOLT 40K	*2681J2	PLPPHUG	Yes
CPHB 15000LM SEF GCL MD MVOLT GZ10 50K 80CRI DWH	CPHB 15LM MVOLT 50K	*2681J5	PJ97Z0F9	Yes
CPHB 18000LM SEF GCL MD MVOLT GZ10 40K 80CRI DWH	CPHB 18LM MVOLT 40K	*268SAJ	PWHG1E01	Yes
CPHB 18000LM SEF GCL MD MVOLT GZ10 50K 80CRI DWH	CPHB 18LM MVOLT 50K	*2681J9	PSRNYSS1	Yes
CPHB 24000LM SEF GCL MD MVOLT GZ10 40K 80CRI DWH	CPHB 24LM MVOLT 40K	*2681JE	PC2IBASD	Yes
CPHB 24000LM SEF GCL MD MVOLT GZ10 50K 80CRI DWH	CPHB 24LM MVOLT 50K	*2681JL	P7DUT85I	Yes
CPHB 30000LM SEF GCL MD MVOLT GZ10 40K 80CRI DWH	CPHB 30LM MVOLT 40K	*2681JM	PRXQVN2Q	Yes
CPHB 30000LM SEF GCL MD MVOLT GZ10 50K 80CRI DWH	CPHB 30LM MVOLT 50K	*2681JP	PDAUA08P	Yes



End View: CPHB 12LM, 15LM, 18LM, 24LM, 30LM



Side View: 12000LM, 15000LM, 18000LM MVOLT



Side View: 24000LM, 30000LM, 18000LM HVOLT

CPHB LED High Bay



Looking for Contractor Select readily available configurations? Click here to visit Contractor Select™ spec sheet or go to www.contractorselect.com

ORDERING INFORMATION

Lead times will vary depending on options selected. Consult with your sales representative.

Example: CPHB 24000LM SEF GCL MD 120 GZ10 40K 80CRI CPSBW LSXR6 HL DWH

CPHB		SEF	GCL			GZ10	
Series	Lumens	Performance Package	Lens	Distribution	Voltage	Driver	Color Temperature
CPHB Compact Pro High Bay	12000LM 12,000 lumens	SEF Standard Efficiency	GCL Glare Control Lens	MD Medium Distribution ND Narrow Distribution WD Wide Distribution	MVOLT 120-277V	GZ10 0-10V dimming driver	40K 4000 K 50K 5000 K
	15000LM 15,000 lumens				120 120V		
	18000LM 18,000 lumens				208 208V		
	24000LM 24,000 lumens				240 240V		
	30000LM 30,000 lumens				277 277V		
					347‡ 347V		
					480‡ 480V		
					HVOLT‡ 347-480V		

80CRI			DWH
Color Rendering Index	Options		Finish
80CRI 80 CRI	<p>Emergency Options‡</p> <p>E10WCP 10W emergency battery pack, Certified in CA Title 20 MAEDBS‡</p> <p>E15WMCP 15W emergency battery pack, Certified in CA Title 20 MAEDBS‡</p> <p>IE20WCPHE 10W 20W emergency battery pack, Certified in CA Title 20 MAEDBS‡</p> <p>WGX Wireguard installed</p> <p>IMP Integrated modular plug</p> <p>OCS RELOC® OnePass selectable cable 6' installed‡</p> <p>Cord Sets‡</p> <p>CPSBW 6' white damp location cord with straight blade plug (voltage will match fixture, 120V or 277V only)</p> <p>CPTLW 6' white damp location cord with twist-lock plug (voltage will match fixture; Not avail with 208V or 240V)</p> <p>CNPW 6' white cord, no plug</p> <p>CNP4CW 6' white cord, 4 conductors (for use with battery)</p> <p>CNP5CDW 6' white cord, 5 conductors (includes dimming leads)</p> <p>For additional cord set offerings, see table on next page.</p>	<p>Individual Controls (LSXR):‡</p> <p>LSXR6 360° integral high mount motion sensor with standard on/off operation</p> <p>LSXR6 HL 360° integral high mount motion sensor with high/low/(off) occupancy operation. For High/Low/(never off), bypass relay</p> <p>LSXR6 P 360° integral high mount motion sensor with on/off switching photocell</p> <p>LSXR6 ADC 360° integral high mount motion sensor with dimming & switching photocell</p> <p>LSXR6 ANL 360° integral high mount motion sensor with High/Low (Off) occupancy dimming & auto-dimming photocell</p> <p>*For 360° integral LOW MOUNT sensors, replace "6" in nomenclature with "10". For High Mount AISLEWAY sensors, replace "6" in nomenclature with "50". Ex: LSXR50 HL</p> <p>nLight AIR Wireless Controls:</p> <p>NLTAIR2 nLight AIR (wireless) gen 2 control device with high mount occupancy and daylight sensor</p> <p>RLSXR6 nLight AIR (wireless) gen 2 control device (dimming & switching power pack)</p> <p>NLTAIR2 nLight AIR (wireless) gen 2 control device (dimming & switching power pack)</p> <p>RPP20</p> <p>*For 360° integral LOW MOUNT sensors, replace "6" in nomenclature with "10". For High Mount AISLEWAY sensors, replace "6" in nomenclature with "50". Ex: RLSXR50</p>	DWH Gloss White

Accessories: Order as separate catalog number.		
<p>Mounting:</p> <p>IBAC120 M100 Aircraft cable 10' with hook (one pair)</p> <p>IBAC240 M75 Aircraft cable 20' with hook (one pair)</p> <p>IBHMP Hook monopoint</p> <p>ZACVH Aircraft 10' V hanger (one pair)</p> <p>HC36 Hanger chain, 36" (one pair)</p> <p>THUN Tong hanger surface mount bracket (order 2 per fixture)</p>	<p>Wire guards:</p> <p>WGCPHBSM Wire guard for CPHB (12000LM - 18000LM)</p> <p>WGCPHBMD Wire guard for CPHB (24000LM - 30000LM)</p>	<p>Cord sets for IMP option: ‡</p> <p>CS1WIMP Straight plug, 120V</p> <p>CS3WIMP Twist-lock, 120V</p> <p>CS7WIMP Straight plug, 277V</p> <p>CS11WIMP Twist-lock, 277V</p> <p>CS93WIMP 600V SO white cord, no plug (no voltage required)</p>

PHOTOMETRICS

See www.lithonia.com.

‡ Option Value Ordering Restrictions	
Option Value	Ordering Restrictions
347	Not available with 12000LM or 15000LM. For 18000LM - 30000LM fixture includes an additional 10kV surge protector. The 18000LM fixture increases in size to 22.5" length when ordered with 347, 480, or HVOLT.
480	Not available with 12000LM or 15000LM. For 18000LM - 30000LM fixture includes an additional 10kV surge protector. The 18000LM fixture increases in size to 22.5" length when ordered with 347, 480, or HVOLT.
Cord Sets	Must specify voltage on cord sets with plugs.
Cord Sets for IMP	Fixture must be ordered with IMP option. All cord sets are 18/3, 6' white.
Emergency Options	MVOLT only. May alter fixture construction. Consult line art for dimensions. Batteries not for use with surface mount option. If cord set is needed, use CNP4C which will have normal hot and unswitched hot exiting cord set. Not available with IMP option.
E10WCP	Max ambient operating temperature of 35°C.
E15WMCP	Factory installation only. Not approved for field installation. Max ambient operating temperature of 35°C.
HVOLT	Not available with 12000LM or 15000LM. For 18000LM - 30000LM fixture includes an additional 10kV surge protector. The 18000LM fixture increases in size to 22.5" length when ordered with 347, 480, or HVOLT.
IE20WCPHE	Battery backpack is >17" long. Compatible only with 24000LM & 30000LM (22") fixture. Max ambient operating temperature of 40°C.
Individual Controls (LSXR)	Comes standard with SPD. This sensor configuration is suitable for minimum ambient temperature of 14°F (-10°C). Not available with other controls.
OCS	Dry Location listed only. Not available with Battery Options.

ADDITIONAL CORD SET OPTIONS

	Cord Set Nomenclature	Fixture Voltage	Description
12FT Options	CPSBW12FT	277	12', White cord, with NEMA 7-15 plug (277v, 15A, straight blade)
	CPTLW12FT	277	12', White cord, with NEMA L7-15 plug (277v, 15A, twist lock)
	CPTLW12FT	480	12', White cord, with NEMA L8-20 plug (480v, 20A, twist lock)
	CNPW12FT	Any	12', White cord, no plug, 3 conductors (BLK/WHT/GRN)
	CNP5CDW12FT	Any	12', White cord, no plug, 5 conductors for dimming - (BLK/WHT/GRN/PUR/GRY)

15FT Options	CPSBW15FT	277	15', White cord, with NEMA 7-15 plug (277v, 15A, straight blade)
	CPTLW15FT	277	15', White cord, with NEMA L7-15 plug (277v, 15A, twist lock)
	CNPW15FT	Any	15', White cord, no plug, 3 conductors (BLK/WHT/GRN)

*CPHB will have additional cord set options available in April 2021. No additional lengths or configurations available at this time.

PERFORMANCE TABLE

	Glare Control Lens, Medium Distribution			
	Lumen Package	Wattage	Lumen Output	LPW
Delivered Lumens 4000K, 80CRI	12000LM	88	12,261	140
	15000LM	104	14,857	143
	18000LM	134	18,364	137
	24000LM	174	24,890	143
	30000LM	214	30,298	141
Delivered Lumens 5000K, 80CRI	12000LM	88	12,342	141
	15000LM	104	14,955	144
	18000LM	134	18,485	138
	24000LM	174	25,054	144
	30000LM	214	30,498	142

SCALING FACTOR TABLES

Multipliers	
ND	1.00
WD	1.04
WGX	0.95