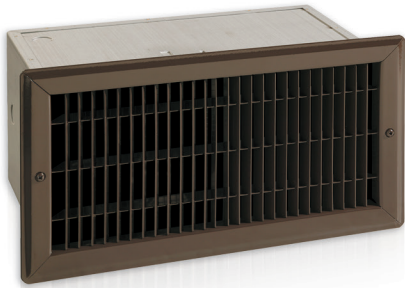


OFH Floor Insert Fan Heater



Features

Color

- Standard: bronze, white, almond.
- Optional (upcharge applicable): metallic silver, metallic charcoal, aluminum, semi-gloss black, sand.
- Custom colors available upon request.

Finish

- Standard: epoxy/polyester powder paint.

Voltage

- 120V, 240/208V, 1-phase.

Construction

- Welded 20-gauge steel.
- Sturdy floor grille (14-gauge).
- Protective screen keeps foreign objects from falling into the unit.
- High-limit temperature control with manual reset.

Fan

- Large diameter, quiet fan operating at 43.9 dBA at 80 cfm.
- Factory-lubricated motor.

Heating element

- Durable tubular heating element with fins.

Installation

- Minimum clearance from adjacent walls: 6 in. (15.2 cm).
- Large wiring compartment.

Warranty

- 5-year warranty against defects.

Application

- Bay window, near patio door.

Note: If an electronic thermostat is used, it must be compatible with forced-air heaters.

Models

Watts	Volts	Product #	Price	Weight	
				lb	kg
500	120	OFH0502	536.00	16.0	7.3
1000	120	OFH1002	551.00	16.0	7.3
1500	120	OFH1502	563.00	16.0	7.3
500/375	240/208	OFH0500	536.00	16.0	7.3
1000/750	240/208	OFH1000	551.00	16.0 <td 7.3	
1500/1125	240/208	OFH1500	563.00	16.0	7.3

Add "BZ" for bronze, "BL" for white, "AM" for almond.
Upcharge available for optional colors shown in the color chart section.

