

**Rittal – The System.**

Faster – better – everywhere.

# COMPACT ENCLOSURES AX

Technical details



ENCLOSURES

POWER DISTRIBUTION

CLIMATE CONTROL

IT INFRASTRUCTURE

SOFTWARE & SERVICES



FRIEDHELM LOH GROUP

# Compact enclosures

## Contents

### Compact enclosures AX, sheet steel

#### Basic enclosure AX

Model No. AX	Width mm	Height mm	Depth mm	Cam lock	3-point locking system	Page
1031.000	380	300	210	1	-	4-5
1033.000	300	300	210	1	-	4-5
1034.000	300	400	210	1	-	4-5
1037.000	400	800	300	2	-	4-5
1038.000	380	600	210	2	-	4-5
1039.000	600	380	210	1	-	4-5
1045.000	400	500	210	2	-	4-5
1050.000	500	500	210	2	-	4-5
1054.000	600	600	250	2	-	4-5
1055.000	800	600	300	2	-	6-7
1057.000	500	700	250	2	-	4-5
1058.000	600	800	250	2	-	4-5
1059.000	600	800	400	2	-	4-5
1060.000	600	600	210	2	-	4-5
1073.000	760	760	300	2	-	6-7
1076.000	600	760	210	2	-	4-5
1077.000	760	760	210	2	-	6-7
1090.000	600	1000	250	2	-	4-5
1091.000	600	1000	400	2	-	4-5
1100.000	1000	760	210	2	-	12-13
1110.000	1000	1000	300	2	-	12-13
1114.000	1000	1,400	300	-	■	14-15
1115.000	1000	1,400	400	-	■	14-15
1116.000	1200	1200	400	-	■	14-15
1130.000	1000	760	300	2	-	12-13
1180.000	800	1000	300	2	-	6-7
1181.000	800	1000	400	2	-	6-7
1213.000	1000	1200	300	-	■	14-15
1214.000	1000	1200	400	-	■	14-15
1260.000	600	1200	300	-	■	8-9
1261.000	600	1200	400	-	■	8-9
1280.000	800	1200	300	-	■	10-11
1281.000	800	1200	400	-	■	10-11
1338.000	380	600	350	2	-	4-5
1339.000	600	380	350	1	-	4-5
1350.000	500	500	300	2	-	4-5
1360.000	600	600	350	2	-	4-5
1376.000	600	760	350	2	-	4-5
1380.000	380	380	210	1	-	4-5

#### Wall-mounted enclosure AX IT with 482.6 mm (19") mounting angles

Model No. AX	Width mm	Height mm	Depth mm	Page
7641.350	600	380	350	20
7643.350	600	600	350	20
7645.350	600	760	350	20
7646.400	600	800	400	20

#### Command panel AX with handle strips

Model No. AX	Width mm	Height mm	Depth mm	Page
6315.150	300	300	210	21
6315.250	380	300	210	21
6315.350	380	380	210	21
6315.450	500	500	210	21
6315.650	600	600	210	21
6320.050	300	200	155	22
6320.350	380	380	210	22
6320.450	500	500	210	22
6320.550	600	380	210	22
6320.650	600	600	210	22

#### Command panel AX for desktop TFT up to 24"

Model No. AX	Width mm	Height mm	Depth mm	Page
6321.050	650	450	155	23

### Compact enclosures AX, stainless steel

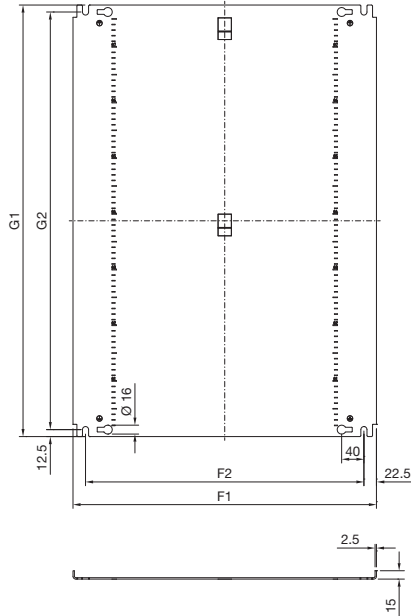
#### Basic enclosure AX

Model No. AX	Width mm	Height mm	Depth mm	Cam lock	3-point locking system	Page
1003.000	300	300	210	1	-	16-17
1005.000	300	380	210	1	-	16-17
1006.000	380	380	210	1	-	16-17
1007.000	500	500	210	2	-	16-17
1008.000	380	600	210	2	-	16-17
1009.000	600	380	210	1	-	16-17
1010.000	600	600	210	2	-	16-17
1011.000	380	300	210	1	-	16-17
1012.000	600	760	210	2	-	16-17
1013.000	500	500	300	2	-	16-17

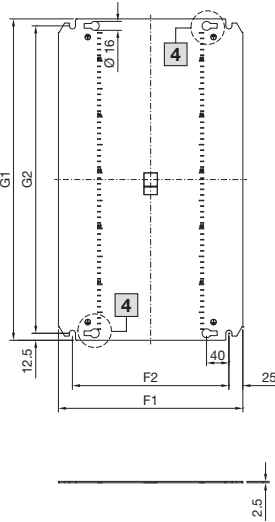
Model No. AX	Width mm	Height mm	Depth mm	Cam lock	3-point locking system	Page
1014.000	760	760	300	2	-	16-17
1015.000	400	500	210	2	-	16-17
1016.000	800	1000	300	2	-	16-17
1017.000	800	1200	300	-	■	18
1018.000	1000	1000	300	2	-	19
1019.000	1000	1200	300	-	■	19
1302.000	300	380	210	1	-	16-17
1303.000	380	380	210	1	-	16-17
1304.000	600	600	210	2	-	16-17
1305.000	1000	1200	300	-	■	19

### Basic enclosure AX with cam lock and one gland plate

Mounting plate type 1,  
with edge fold



Mounting plate type 2,  
without edge fold



#### Enclosure

- B1 = Enclosure width (overall width)
- B2 = Door width
- B3 = Clearance width, enclosure opening
- B4 = Clearance width between door profile strips
- B5 = Mounting distance, door profile strips
- B6 = Mounting distance, enclosures
- B7 = Gland plate opening
- H1 = Enclosure height (overall height)
- H2 = Door height
- H3 = Clearance height, enclosure opening
- H4 = Overall height, 25 mm pitch pattern of holes
- H6 = Mounting distance, enclosures
- N = No. of 25 mm pitch patterns of holes
- T1 = Overall depth
- T2 = Enclosure depth
- T3 = Installation depth (distance from inside of door to mounting plate)
- T7 = Gland plate opening

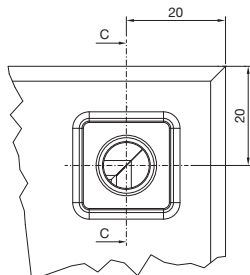
#### Mounting plate

- F1 = Mounting plate width
- F2 = Centre-to-centre spacing of the attachment holes
- G1 = Mounting plate height
- G2 = Centre-to-centre spacing of the attachment holes

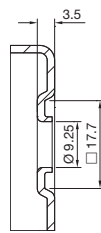
#### Gland plate

- M = Gland plate width
- O = Gland plate depth
- Type = Size of gland plate

Detail Y



Section C - C



ModelNo. AX	Width dimensions mm							Height dimensions mm							Depth dimensions mm				Mounting plate mm					Gland plate mm		
	B1	B2	B3	B4	B5	B6	B7	H1	H2	H3	H4	H6	N	T1	T2	T3	T7	F1	F2	G1	G2	Type	M	O	Type	
1031.000	380	374	332.7	289.5	305	340	303	300	294	256.5	150	260	6	209.7	187.0	189.0	113	330	280	275	250	2	339	149	2	
1033.000	300	294	252.7	209.5	225	260	220	300	294	256.5	150	260	6	209.7	187.0	189.0	113	250	200	275	250	2	256	149	1	
1034.000	300	294	252.7	209.5	225	260	220	400	394	356.5	250	360	10	209.7	187.0	189.0	113	250	200	375	350	2	256	149	1	
1037.000	400	395	352.2	309.5	325	360	265	800	795	756	650	760	26	300.7	277.5	278.7	185	345	300	775	750	1	301	221	5	
1038.000	380	374	332.7	289.5	305	340	303	600	594	556.5	450	560	18	209.7	187.0	188.5	113	330	280	575	550	2	339	149	2	
1039.000	600	594	552.7	509.5	525	560	498	380	374	336.5	250	340	10	209.7	187.0	188.5	113	550	500	355	330	2	534	149	4	
1045.000	400	394	352.7	309.5	325	360	303	500	494	456.5	350	460	14	209.7	187.0	189.0	113	350	300	475	450	2	339	149	2	
1050.000	500	494	452.7	409.5	425	460	411	500	494	456.5	350	460	14	209.7	187.0	188.5	113	450	400	475	450	2	447	149	3	
1054.000	600	594	552.2	509.5	525	560	498	600	594	556	450	560	18	250.2	227.5	228.7	113	550	500	575	550	2	534	149	4	
1057.000	500	495	452.2	409.5	425	460	411	700	695	656	550	660	22	250.7	227.5	228.7	113	450	400	675	650	2	447	149	3	
1058.000	600	595	552.2	509.5	525	560	498	800	795	756	650	760	26	250.7	227.5	228.7	113	545	500	775	750	1	534	149	4	
1059.000	600	595	552.2	509.5	525	560	400	800	795	756	650	760	26	400.7	377.5	378.7	185	545	500	775	750	1	436	221	7	
1060.000	600	594	552.2	509.5	525	560	498	600	594	556	450	560	18	210.2	187.5	188.7	113	550	500	575	550	2	534	149	4	
1076.000	600	595	552.2	509.5	525	560	498	760	755	716	600	720	24	210.7	187.5	188.7	113	550	500	735	710	2	534	149	4	
1090.000	600	595	552.2	509.5	525	560	498	1000	995	956	850	960	34	250.7	227.5	228.7	113	545	500	975	950	1	534	149	4	
1091.000	600	595	552.2	509.5	525	560	400	1000	995	956	850	960	34	400.7	377.5	378.7	185	545	500	975	950	1	436	221	7	
1338.000	380	374	332.2	289.5	305	340	265	600	594	556.5	450	560	18	350.2	327.5	328.7	185	330	280	575	550	2	301	221	5	
1339.000	600	594	552.2	509.5	525	560	400	380	374	336	250	340	10	350.2	327.5	328.7	185	550	500	355	330	2	436	221	7	
1350.000	500	494	452.2	409.5	425	460	365	500	494	456	350	460	14	300.2	277.5	278.7	185	450	400	475	450	2	401	221	6	
1360.000	600	594	552.2	509.5	525	560	400	600	594	556	450	560	18	350.2	327.5	328.7	185	550	500	575	550	2	436	221	7	
1376.000	600	595	552.2	509.5	525	560	400	760	755	716	600	720	24	350.7	327.5	328.7	185	550	500	735	710	2	436	221	7	
1380.000	380	374	332.7	289.5	305	340	303	380	374	336.5	250	340	10	209.7	187.0	189.0	113	330	280	355	330	2	339	149	2	