

MasterConnect T8

14T8/48-840/IF21/MC IA 10/1

Philips MasterConnect LEDtube InstantFit T8, which is Interact Ready, enables an easy upgrade to a connected lighting system without re-wiring the fixtures. The 2.4GHz mesh networking technology allows wireless integration with a variety of control devices, such as sensor and switch, for easy light automation. It also offers secure and reliable communication towards the Interact IoT platform or verified third party systems. The result? Greater energy savings, various control possibilities and a more adaptable space!

Product data

General Information	
Cap-Base	G13 [Medium Bi-Pin Fluorescent]
EU RoHS compliant	Yes
Nominal Lifetime (Nom)	70000 h
Switching Cycle	50000X
Technical Type	14-25-28-30-32W
Light Technical	
Color Code	840 [CCT of 4000K]
Beam Angle (Nom)	160 °
Luminous Flux (Nom)	2100 lm
Color Designation	Cool White (CW)
Correlated Color Temperature (Nom)	4000 K
Luminous Efficacy (rated) (Nom)	150.00 lm/W
Color Consistency	<6
Color Rendering Index (Nom)	82
LLMF At End Of Nominal Lifetime (Nom)	70 %
Operating and Electrical	
Input Frequency	28K to 100K Hz

Power (Nom)	14 W
Lamp Current (Max)	380 mA
Lamp Current (Min)	120 mA
Starting Time (Nom)	0.5 s
Warm Up Time to 60% Light (Nom)	0.5 s
Power Factor (Nom)	0.9
Voltage (Nom)	100-380 V
Temperature	
T-Ambient (Max)	45 °C
T-Ambient (Min)	-20 °C
T-Storage (Max)	65 °C
T-Storage (Min)	-40 °C
T-Case Maximum (Nom)	40 °C
Controls and Dimming	
Dimmable	Wireless Dim
Mechanical and Housing	
Product Length	1200 mm

MasterConnect T8

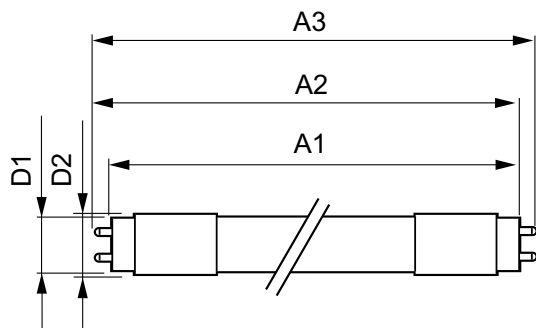
Bulb Shape	Tube, double-ended
Approval and Application	
Energy Saving Product	Yes
Approval Marks	RoHS compliance UL certificate DLC compliance
Energy Consumption kWh/1000 h	- kWh

Product Data

Order product name	14T8/48-840/IF21/MC IA 10/1
--------------------	-----------------------------

EAN/UPC - Product	046677547301
Order code	929002051904
Numerator - Quantity Per Pack	1
Numerator - Packs per outer box	10
Material Nr. (12NC)	929002051904
Net Weight (Piece)	0.220 kg

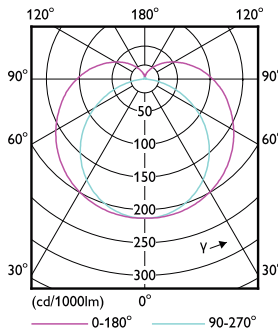
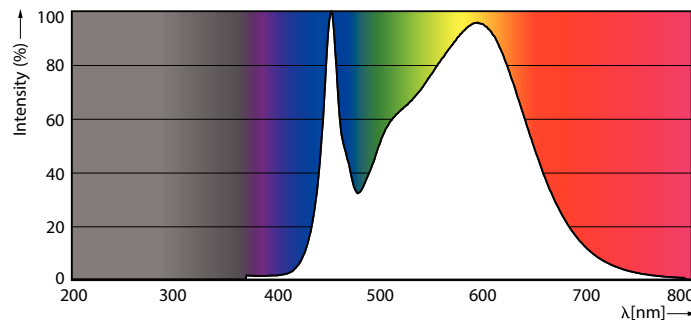
Dimensional drawing



Product	D1	D2	A1	A2	A3
14T8/48-840/IF21/MC IA 10/1	25.7 mm	26.3 mm	1198 mm	1205 mm	1212 mm

TLED 1200 120V 14-32W 2100lm 4000K G13

Photometric data

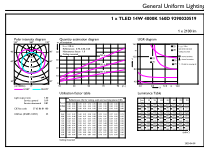


LEDtube 14W G13 2100lm 840

LEDtube 14W G13 2000lm

MasterConnect T8

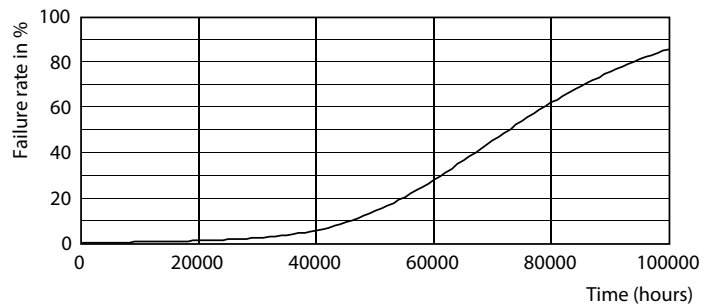
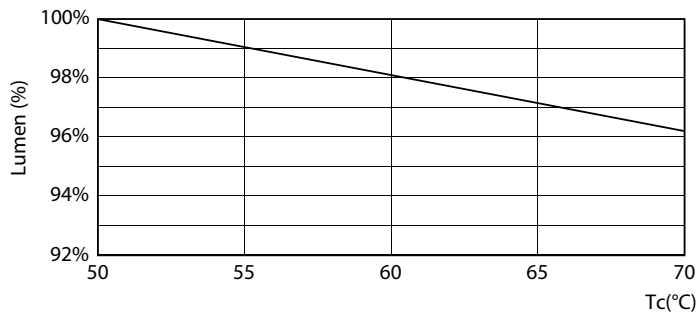
Photometric data



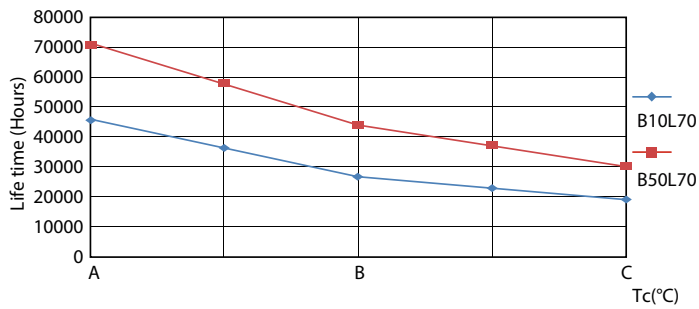
Optical Parameters 43 Page 10

LEDtube 14W G13 2100lm 840

Lifetime



MC LEDtube 16W 60K LumenVsTc



LEDtube_70K-LED

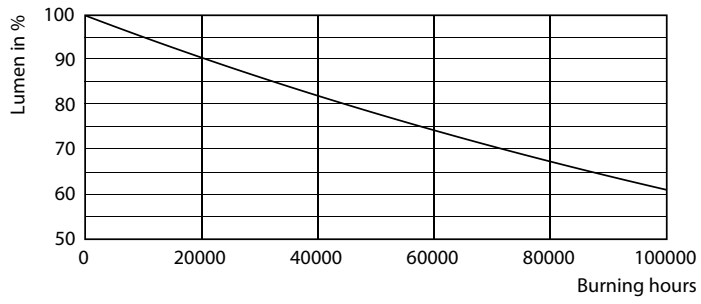


LEDtube_70K_LifetimeVsTc-LED

LEDtube_70K_FailureRate-LED

MasterConnect T8

Lifetime



LEDtube_70K-LMP

