



The RFBA floor box is built for multiple applications and environments

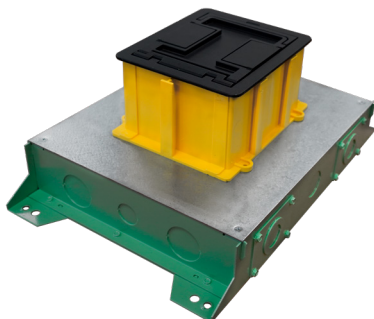
Recessed Floor Boxes for Concrete

RFBA2R, RFBA4R

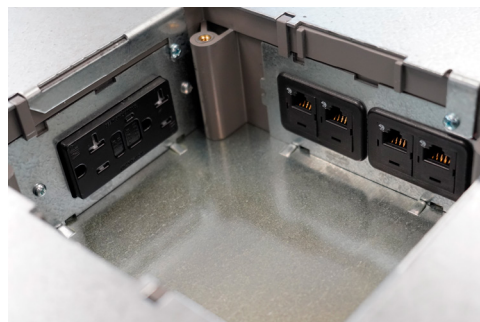
Resource RFBA Series of Floor Boxes are versatile recessed activation solutions that provide power, communication and/or audio/video services to open space areas, or directly to workstations. Resource RFBA Series Floor Boxes are available in two and four-gang models in either shallow (2.5") or standard (3.0") heights. The boxes utilize existing FloorPort covers and can be installed in carpet, wood, tile terrazzo and polished concrete. The RFBA series includes improved wire and cable routing, allowing for easier wire pulling in adjacent compartments and around corners.

Features & Benefits

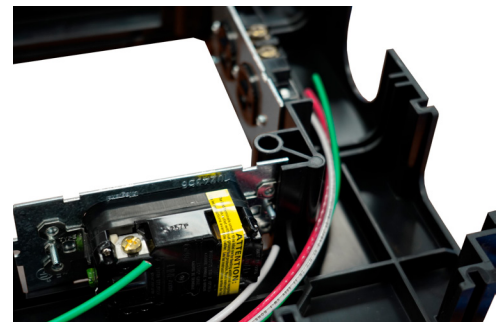
- **Suitable for Various Applications.** Steel and on-grade (epoxy coated) to meet your specific installation requirements with support for installation in carpet, wood, tile terrazzo and polished concrete.
- **Shallow and Standard Depths.** Choose from either a shallow (2.5") depth box or a standard (3.0") depth box.
- **Common Mounting Plates.** All models share the same mounting plates, allowing for easier configuration and specification.
- **Numerous Conduit Knockouts.** Features knockouts on all sides and bottom of box to allow for greater installation flexibility to work within your environment.
- **FloorPort Activation Covers.** Provides TopGuard protection from water, dirt and debris plus added strength and durability. Available in brushed aluminum and five decorative powder coat finishes: Black, Brass, Nickel, Gray and Bronze.
- **Improved Cable Management.** Internal compartments feature improved wire and cable routing for easier wire pulling in adjacent compartments and around corners.
- **Post-Pour Features:** Allows for adjustment post-pour and features removable dividers that can be installed or removed before or after the concrete pour.



Rectangular extension ring can be used to extend height of box up to 4 inches



All models share eight (8) common device plates, allowing for data and power within the same box



Interior compartment of box features rounded corners for improved cable routing

Compliance

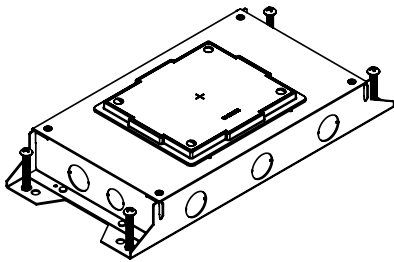
 **cULus Listed:** Metallic Outlet Boxes for tile, terrazzo, carpet and wood floors.
File E2961 Guide QCIT

Resource RFB® Series Floor Boxes with Rectangular Activations Selection Guide

Box Model	Box Type	Box Capacity	Box Depth	Conduit Size
RFBA2R25	Above Grade	2-Gang	2.5"	¾" - 1 ¼"
RFBA2R25OG	On-Grade	2-Gang	2.5"	¾" - 1 ¼"
RFBA2R30	Above Grade	2-Gang	3.0"	¾" - 2"
RFBA2R30OG	On-Grade	2-Gang	3.0"	¾" - 2"
RFBA4R25	Above Grade	4-Gang	2.5"	¾" - 1 ½"
RFBA4R25OG	On-Grade	4-Gang	2.5"	¾" - 1 ½"
RFBA4R30	Above Grade	4-Gang	3.0"	¾" - 2"
RFBA4R30OG	On-Grade	4-Gang	3.0"	¾" - 2"

Resource RFBA Series Floor Boxes with Rectangular Activations Ordering Information

RFBA2R25



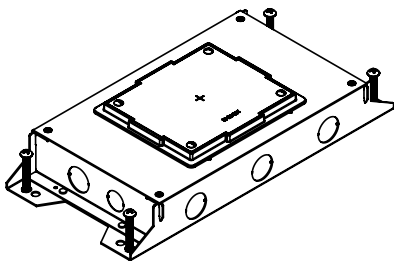
2-Gang RFBA Floor Box, Shallow 2.5" Depth – Steel floor box designed for above grade installations. Features 2-gangs of box capacity with 3" available behind plates. When ordering device plates for box, 2 blank device plates (Cat. No. RFBAB) must also be ordered to seal off wire and cable routing passageways. Fully adjustable before and after concrete pour. Designed for carpet, wood, tile terrazzo and polished concrete applications..

Concrete Pour: Minimum concrete pour without collar is 2.5". If using the collar, pour should be 3".

- Sold Separately:
- FloorPort Covers
 - Device Plates

Country of Origin: USA

RFBA2R25OG



2-Gang RFBA On-Grade Floor Box, Shallow 2.5" Depth – Steel floor box designed for on-grade installations with a fusion-bonded epoxy for use on metal reinforcement bar and related accessories before encapsulating in concrete. Features 2-gangs of box capacity with 3" available behind plates. When ordering device plates for box, 2 blank device plates (Cat. No. RFBAB) must also be ordered to seal off wire and cable routing passageways. Fully adjustable before and after concrete pour.

Concrete Pour: Minimum concrete pour without collar is 2.5". If using the collar, pour should be 3".

- Sold Separately:
- FloorPort Covers
 - Device Plates

Country of Origin: USA

Dimensions:

