



T8

10T8/COR/48-840/IF16/G/DIM 10/1

Our TLEDs are available in InstantFit (Type A / Type C) or MainsFit (Ballast bypass / Type B) versions. The InstantFit lamps work on a broad variety of ballasts and LED drivers. Only InstantFit has over 15,000 lamp & ballast combinations delivering even light output, energy savings and a long lifetime. Our MainsFit products feature a double-ended design, simplifying installation while a proprietary safety circuit minimizes a shock risk. Lamp sizes range from 2-foot to 8-foot and U-bend with a variety of lumen outputs.

Product data

General Information	
Cap-Base	G13 [Medium Bi-Pin Fluorescent]
EU RoHS compliant	Yes
Nominal Lifetime (Nom)	50000 h
Switching Cycle	50000X
Light Technical	
Color Code	840 [CCT of 4000K]
Beam Angle (Nom)	240 °
Luminous Flux (Nom)	1600 lm
Color Designation	Cool White (CW)
Correlated Color Temperature (Nom)	4000 K
Luminous Efficacy (rated) (Nom)	160.00 lm/W
Color Consistency	<6
Color Rendering Index (Nom)	82
LLMF At End Of Nominal Lifetime (Nom)	70 %
Operating and Electrical	
Input Frequency	25000-105000 Hz
Power (Nom)	10 W

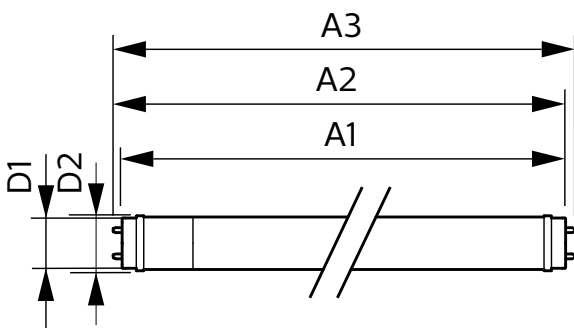
Lamp Current (Max)	260 mA
Lamp Current (Min)	100 mA
Starting Time (Nom)	0.5 s
Warm Up Time to 60% Light (Nom)	0.5 s
UL Type	Type A - works on ballast
Power Factor (Nom)	0.9
Voltage (Nom)	120-277, 347 V
Temperature	
T-Ambient (Max)	45 °C
T-Ambient (Min)	-20 °C
T-Storage (Max)	65 °C
T-Storage (Min)	-40 °C
T-Case Maximum (Nom)	50 °C
Controls and Dimming	
Dimmable	Yes
Mechanical and Housing	
Bulb Material	Glass

T8

Product Length	1200 mm
Bulb Shape	Tube, double-ended
Approval and Application	
Energy Efficiency Label (EEL)	Not applicable
Energy Saving Product	Yes
Approval Marks	RoHS compliance UL certificate DLC compliance
Energy Consumption kWh/1000 h	- kWh

Product Data	
Order product name	10T8/COR/48-840/IF16/G/DIM 10/1
EAN/UPC - Product	046677553234
Order code	929001991734
Numerator - Quantity Per Pack	1
Numerator - Packs per outer box	10
Material Nr. (12NC)	929001991734
Net Weight (Piece)	0.230 kg

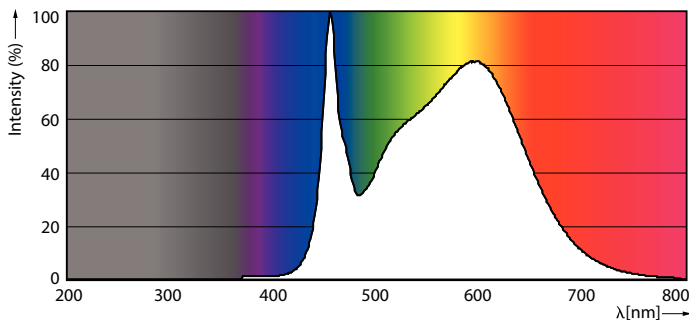
Dimensional drawing



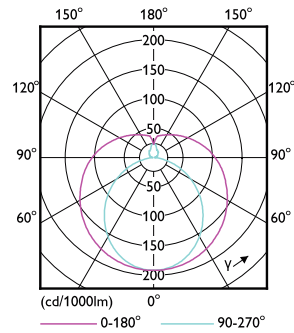
TLED 1200mmT8 120-277 10.5W 1650lm 4000K

Product	D1	D2	A1	A2	A3
10T8/COR/48-840/IF16/G/DIM 10/1	25.7 mm	28 mm	1198.1 mm	1205.2 mm	1212.3 mm

Photometric data

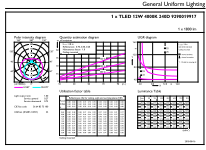


LEDtube 10W G13 840 ND



LEDtube 10W G13 840 ND

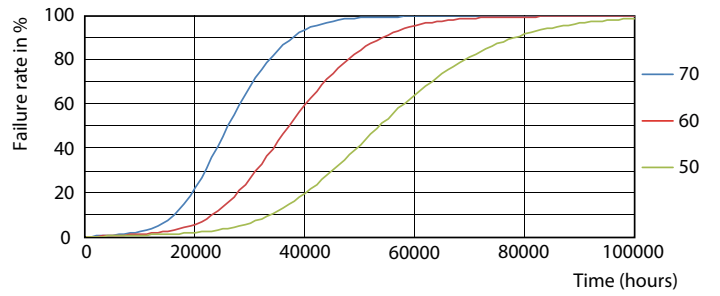
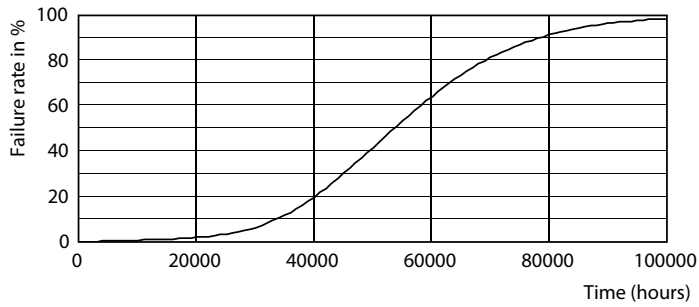
Photometric data



Technical Parameters 43
Photometry 87
Page 10

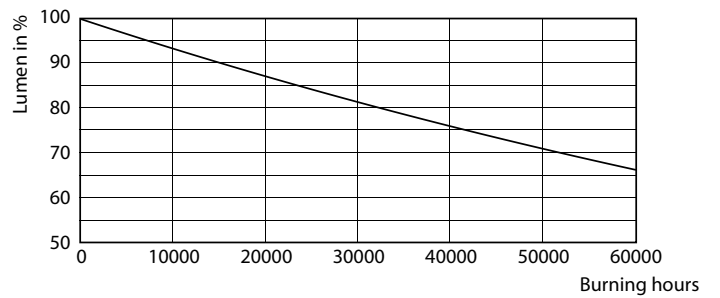
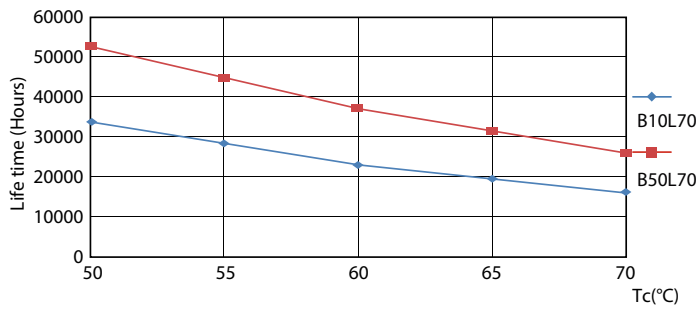
LEDtube 10W G13 840 ND

Lifetime



LEDtube 10W G13 850 ND

LEDtube 10W G13 850 ND



LEDtube 10W G13 850 ND

LEDtube 10W G13 850 ND