

Project		Catalog #		Type	
Prepared by		Notes		Date	



HALO

SMD6 Series

6" Round and Square Surface Mount Downlight
SMD6R & SMD6S

Typical Applications
Residential

Interactive Menu

- Order Information [page 2](#)
- Product Specifications [page 4](#)
- Photometric Data [page 5](#)
- Product Warranty

Product Certification



Refer to ENERGY STAR® Certified Products List.
Can be used to comply with California Title 24 High Efficacy requirements.
Certified to California Appliance Efficiency Database under JAB.

Product Features

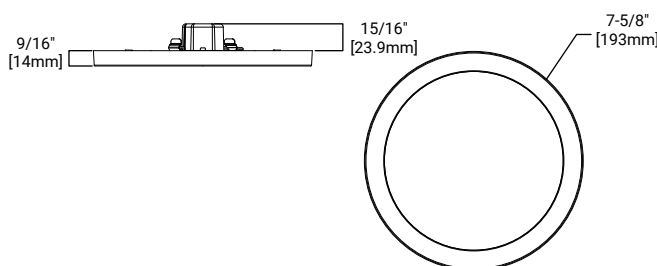


Top Product Features

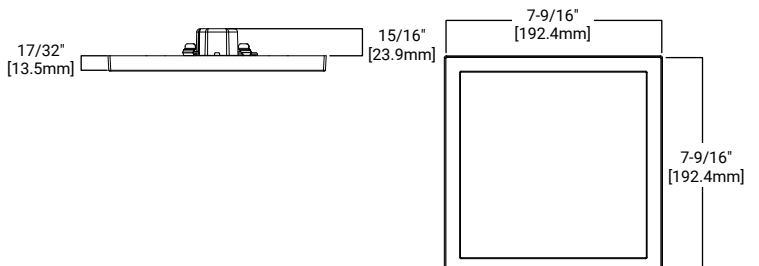
- Ultra-low profile surface luminaire with wide distribution
- Ceiling or wall mounting in compatible junction boxes
- 600 & 1200 lumen; 2700K, 3000K, 3500K, 4000K or 5000K field selectable CCT; 90 CRI
- 120V only and Universal Voltage 120V – 277V options
- Dimmable with 120V dimmers

Dimensional and Mounting Details

SMD6RXXXWH



SMD6SXXXWH



[additional product diagrams](#)

Ordering Information

SAMPLE NUMBER: **SMD6R69SWH** = 6" Round Surface Mount Downlight, 600 lumen, 90CRI, Selectable CCT, White, 120V

Junction Box Installation: Order junction box separately, as supplied by others, to complete installation.

Recessed Installation: Order HALO recessed housing and SMD6ACCKIT separately to complete installation.

Models	Lumens	CRI/CCT	Finish	Voltage
Models SMD6R = 6" Round Surface Mount Downlight SMD6S = 6" Square Surface Mount Downlight	Lumens 6 = 600 lumen series (120V only) 12 = 1200 lumen series	CRI/CCT 9S = 90CRI, 2700K - 5000K Field Selectable CCT	Finish WH = Matte White	Voltage Blank = 120V standard E = UNV Universal 120-277V ⁽¹⁾
Notes	Notes	Notes	Notes	Notes ⁽¹⁾ UNV voltage configuration is offered only in the 1200 lumen series

Accessories

Accessories
<p>Designer Trims SMD6RTRMSN = 6" Round SMD Satin Nickel SMD6RTRMTBZ = 6" Round SMD Tuscan Bronze SMD6RTRMWH = 6" Round SMD White (paintable) SMD6STRMSN = 6" Square SMD Satin Nickel SMD6STRMTBZ = 6" Square SMD Tuscan Bronze SMD6STRMWH = 6" Square SMD White (paintable) T24HWKIT = Title 24 Cable harness kit used to convert incandescent and low voltage housings to LED SMD6ACCKIT = SMD6 accessory kit includes friction clips, torsion springs and a Edison screwbase adapter for recessed housing installation.</p>
Notes

Accessories

Designer Trims



SMD6RTRMWH
round, white (paintable)



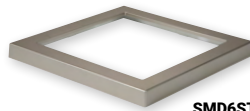
SMD6RTRMSN
round, satin nickel



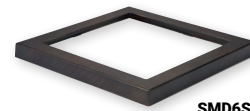
SMD6RTRMTBZ
round, tuscan bronze



SMD6STRMWH
square, white (paintable)



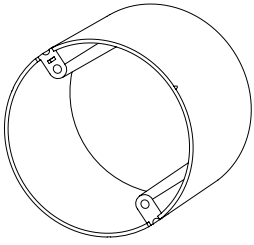
SMD6STRMSN
square, satin nickel



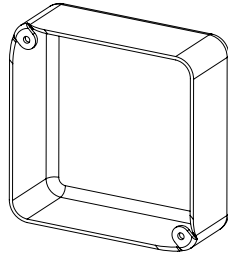
SMD6STRMTBZ
square, tuscan bronze

Junction Box Compatibility

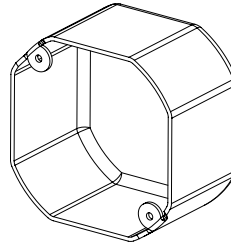
NOTE: The SMD6 1200LM Series has a taller driver. The 4inch x 2-1/8 deep Square junction box is recommended for installation. The depth of the junction box must be a MINIMUM 2-1/8inch deep. The 4inch x 2-1/8 deep Octagon junction box can be used with limited number of wires or smaller gauge wires and wire caps.



Round
Recommend 2" depth
(1-1/2" minimum)



Square
1-1/2" minimum depth



Octagonal
Recommend 4" depth
(2-1/8" minimum)

This is a representative list of compatible junction boxes only. Information contained in this literature about other manufacturers' products is from published information made available by the manufacturer and is deemed to be reliable, but has not been verified. Cooper Lighting Solutions makes no specific recommendation on product selection and there are no warranties of performance or compatibility implied. Installer must determine that site conditions are suitable to allow proper installation of the mounting bracket in the box.

Dimensional and Mounting Details Continued

