

Arktite heavy duty circuit breaking receptacle assemblies and housings

NEMA 4 Watertight

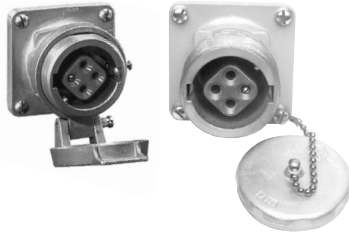
1P

30A, 600 VAC/250 VDC, 50-400 Hz

Ordering information:



Receptacle assembly



Receptacle



Mating plug

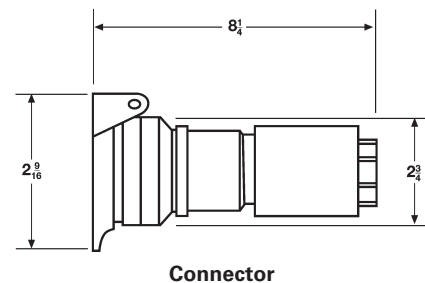
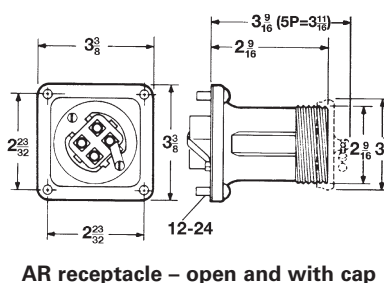
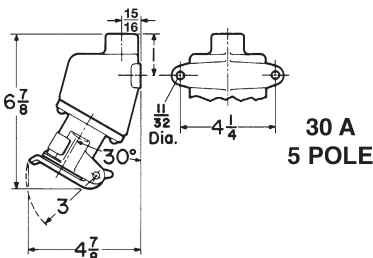
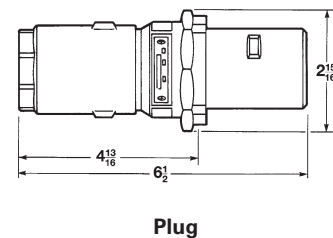
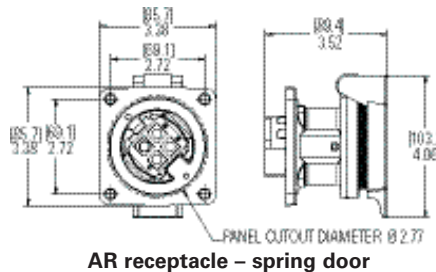
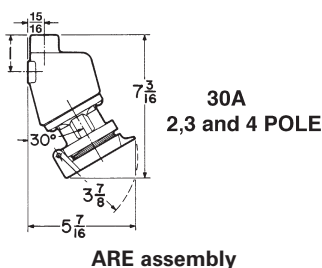


Mating connector

With ARE back boxes			Receptacle housings only		Mating APJ plugs [Ⓐ]		Mating APR connectors	
Description	Hub size	Cat. # Spring door	Cat. # Spring door	Cat. # Threaded cap only	Cat. #	Cable dia.	Cat. #	Cable dia.
Style 1								
2-wire,	1/2"	ARE3211	AR321	AR327	APJ3275	0.39 - 0.875"	APR3255	0.39 - 0.875"
2-pole	3/4"	ARE3212	AR321	AR327	APJ3275	0.39 - 0.875"	APR3255	0.39 - 0.875"
3-wire,	3/4"	ARE3312	AR331	AR337	APJ3375	0.39 - 0.875"	APR3355	0.39 - 0.875"
3-pole	1"	ARE3313	AR331	AR337	APJ3375	0.39 - 0.875"	APR3355	0.39 - 0.875"
4-wire,	3/4"	ARE3412	AR341	AR347	APJ3475	0.39 - 0.875"	APR3455	0.87 - 1.20"
4-pole	1"	ARE3413	AR341	AR347	APJ3475	0.39 - 0.875"	APR3455	0.87 - 1.20"
5-wire,	1"	ARE3513	AR351		APJ3573	0.500 - 0.875"	APR3553	0.500 - 0.875"
5-pole	1"	ARE3513	AR351		APJ3573	0.500 - 0.875"	APR3553	0.500 - 0.875"
Style 2								
2-wire,	3/4"	ARE3322	AR332	AR338	APJ3385	0.39 - 0.875"	APR3365	0.39 - 0.875"
3-pole	1"	ARE3323	AR332	AR338	APJ3385	0.39 - 0.875"	APR3365	0.39 - 0.875"
3-wire,	3/4"	ARE3422	AR342	AR348	APJ3485	0.39 - 0.875"	APR3465	0.39 - 0.875"
4-pole	1"	ARE3423	AR342	AR348	APJ3485	0.39 - 0.875"	APR3465	0.39 - 0.875"
4-wire,	1"	ARE3523	AR352		APJ3583	0.500 - 0.875"	APR3563	0.500 - 0.875"
5-pole	1"	ARE3523	AR352		APJ3585	0.875 - 1.375"	APR3565	0.875 - 1.375"

For applicable 30A back boxes, see page 1332.

Dimensions (in inches):



[Ⓐ]For use on systems less than 60 Hz, the receptacles, plugs and connectors are for disconnect use only.