

Catalog Number
Notes
Type

## FEATURES & SPECIFICATIONS

### INTENDED USE

Provides years of maintenance-free illumination for outdoor use in residential & commercial applications. Ideal for applications such as lighting walkways and stairways for safety and security.

### CONSTRUCTION

Cast-aluminum housing with corrosion-resistant paint in either dark bronze or white finish.

ADA compliant.

### OPTICS

4000K CCT LEDs.

Polycarbonate lens protects the LED from moisture, dirt and other contaminants.

**LUMEN MAINTENANCE:** The LED will deliver 70% of its initial lumens at 50,000 hour average LED life. See Lighting Facts label on page 2 for performance details.

### ELECTRICAL

MVOLT driver operates on any line voltage from 120-277V

Operating temperature -30°C to 40°C.

1KV surge protection standard.

### INSTALLATION

Surface mounts to universal junction box (provided by others).

### LISTINGS

UL Listed to U.S. and Canadian safety standards for wet locations.

Tested in accordance with IESNA LM-79 and LM-80 standards.

**WARRANTY** — 5-year limited warranty. Complete warranty terms located at:

[www.acuitybrands.com/support/customer-support/terms-and-conditions](http://www.acuitybrands.com/support/customer-support/terms-and-conditions)

**Note:** Actual performance may differ as a result of end-user environment and application.

All values are design or typical values, measured under laboratory conditions at 25 °C.

Specifications subject to change without notice.

Outdoor General Purpose

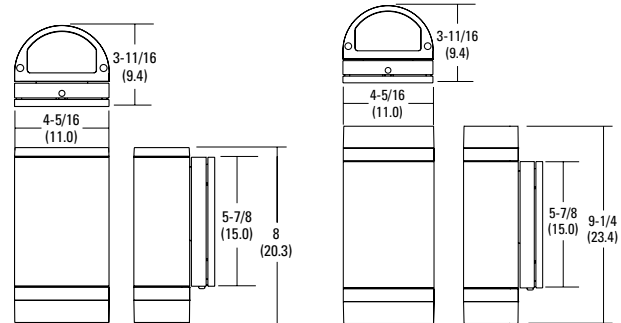
# OLLWD & OLLWU

LED WALL CYLINDER LIGHT



### Specifications

All dimensions are inches (centimeters)



### ORDERING INFORMATION

For shortest lead times, configure products using **bolded options**.

**Example:** OLLWD LED P1 40K MVOLT DDB

Series	Performance Package	Color temperature (CCT)	Voltage	Finish
<b>OLLWD LED</b> Downlight	<b>P1</b>	<b>40K</b> 4000K	<b>MVOLT</b> 120V-277V	<b>DDB</b> Dark bronze
<b>OLLWU LED</b> Up & downlight			<b>120</b> 120V <sup>1</sup>	<b>WH</b> White <sup>2</sup>

### Notes

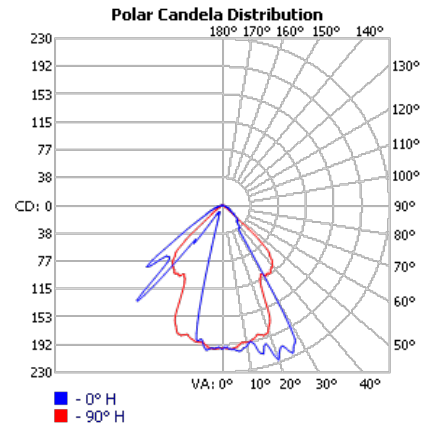
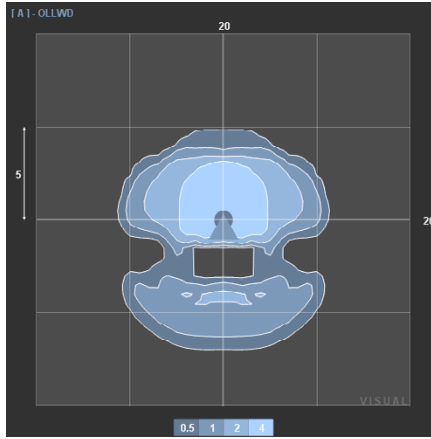
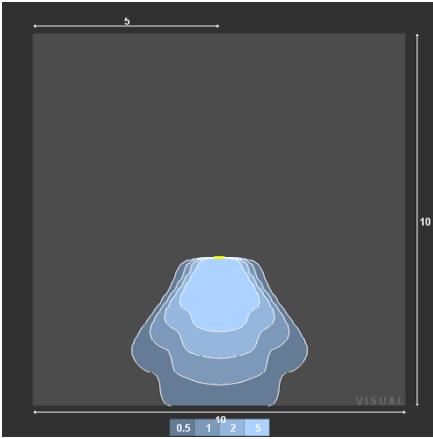
1. Only available with OLLWU and in DDB.
2. Only available with OLLWU.

# OLLWD & OLLWU LED Wall Cylinder Light

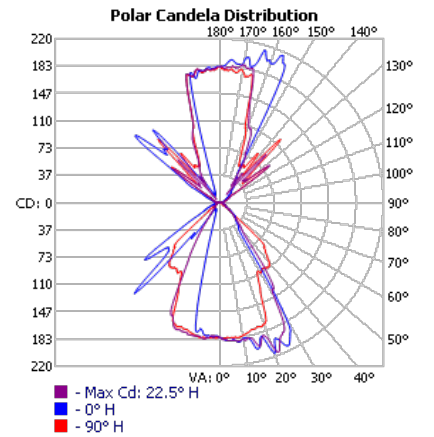
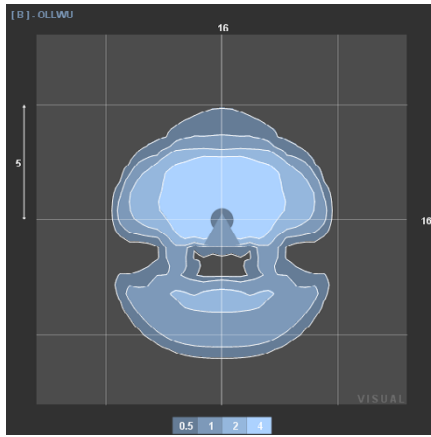
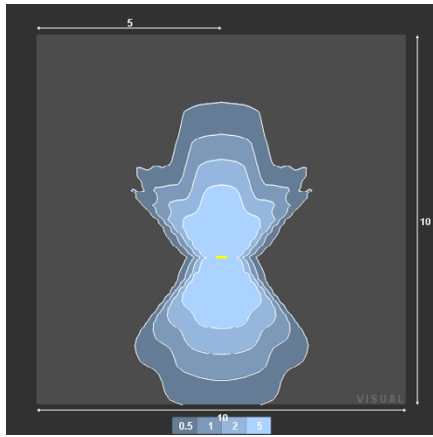
## PHOTOMETRICS

To see complete photometric reports or download .ies files for this product, visit Lithonia Lighting's Outdoor LED homepage  
 Tested in accordance with IESNA LM-79 and LM-80 standards.

### OLLWD



### OLLWU



**LED lighting facts**  
 A Program of the U.S. DOE

**Light Output (Lumens)** 533  
**Watts** 9.1  
**Lumens per Watt (Efficacy)** 58.63

**Color Accuracy** 70  
 Color Rendering Index (CRI)

**Light Color** 4000 (Bright White)  
 Correlated Color Temperature (CCT)

2700K 3000K 4500K 6500K

All results are according to IESNA LM-79-2009: Approved Method for the Electrical and Photometric Testing of Solid State Lighting. The U.S. Department of Energy (DOE) verifies product test data and results.

Visit [www.lightingfacts.com](http://www.lightingfacts.com) for the Label Reference Guide.

Registration Number: NLSM-WFYM (7/20/2016)  
 Model Number: OLLWD LED P1 40K XXXXX XXX  
 Type: Luminaire - Other

**LED lighting facts**  
 A Program of the U.S. DOE

**Light Output (Lumens)** 947  
**Watts** 14  
**Lumens per Watt (Efficacy)** 67.64

**Color Accuracy** 70  
 Color Rendering Index (CRI)

**Light Color** 4000 (Bright White)  
 Correlated Color Temperature (CCT)

2700K 3000K 4500K 6500K

All results are according to IESNA LM-79-2009: Approved Method for the Electrical and Photometric Testing of Solid State Lighting. The U.S. Department of Energy (DOE) verifies product test data and results.

Visit [www.lightingfacts.com](http://www.lightingfacts.com) for the Label Reference Guide.

Registration Number: NLSM-YTHN (8/20/2016)  
 Model Number: OLLWU LED P1 40K XXXXX XXX  
 Type: Luminaire - Other