

Strut Fittings

Catalog #	Description	Std. Pkg.	Net Price
Spring Nuts - Regular Spring			
C6-1420RS	1/4" - 20	100	
C7RS	5/16" - 18	100	
C8RS	3/8" - 16	100	
C10RS	1/2" - 13	100	
C12RS	5/8" - 11	100	
C13RS	3/4" - 10	100	

Stainless Steel, Short, Long or No Spring versions are available



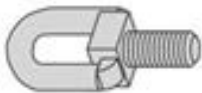
Eyelets

C202*	Eyelet	25
C205*	Eyelet with Stud	25
C204*	Linked Eyelets	25
C203*	Linked Eyelets with Stud	25

*Specify 3/8" or 1/2"



C202



C205



C204



C203

Flat Plate Fittings

C601	2 Hole Splice Plate	50
C602	3 Hole Splice Plate	25
C723	4 Hole Splice Plate	25
C718	3 Hole Flat Angle Plate	50
C719	4 Hole Flat Angle Plate	20
C714	T Plate	25
C712	Cross Plate	10
C619*	Square Washer	10

*Specify Hole Size



Splice Plates



C718



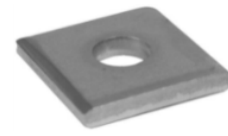
C719



C714



C712



C619

90 Degree Fittings

C603	2 Hole End Angle	50
C604	2 Hole Corner Angle	50
C605	3 Hole Corner Angle	25
C607	4 Hole Corner Angle	25



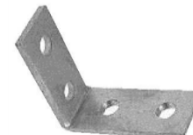
C603



C604



C605



C607

Strut Fittings

Catalog #	Description	Std. Pkg.	Net Price
Angle Fittings			
C793*	4 Hole Closed Angle	25	
C781*	4 Hole Open Angle	25	
C624*	2 Hole Closed Angle	25	
C633*	2 Hole Open Angle	25	
PS9402	2 Hole Hinge Connector	1	
PS9403	3 Hole Hinge Connector	1	
PS9404	4 Hole Hinge Connector	1	

*Specify Angle



C793



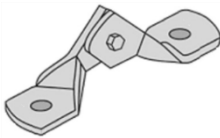
C781



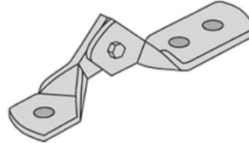
C624



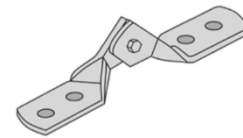
C633



PS9402



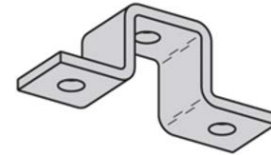
PS9403



PS9404

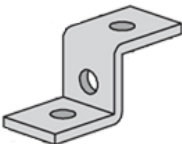
U Support, Zee Fittings and Joiners

C613	U Support	15	
C611	Z Fitting - 1-5/8" Channel	15	
C612	Z Fitting - 1" Channel	25	
C631	2 Hole Strut Joiner	25	
C616	4 Hole Strut Joiner	10	
C649A*	Strut Joiner - Stamped Steel	25	

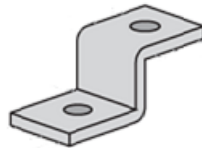


C613

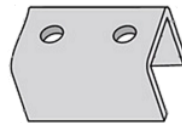
*Includes Flat Head Machine Screws and 4 Hole Splice Plate Nut



C611



C612



C631



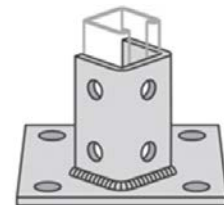
C616



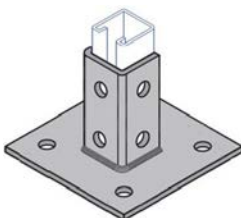
C649A

Post Bases

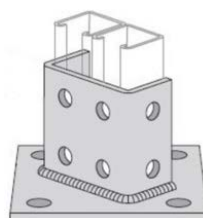
C3033	Single Post Base - Offset	5	
C3033SQ	Single Post Base - Square	5	
C3064	Double Post Base - Offset	5	
C3064SQ	Double Post Base - Square	5	



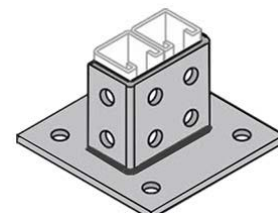
C3033



C3033SQ



C3064



C3064SQ

Strut Fittings

Catalog # **Description** **Std. Pkg. Net Price**

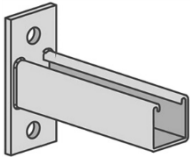
Brackets

C3373	Universal Corner Connector	10
C651*	Reversible Channel Bracket	1
C809*	Double Channel Bracket	1
C3282*	Cable Tray Strut Bracket	1
C732*	Shelf Bracket	1

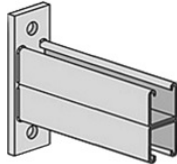
*Specify Length Required



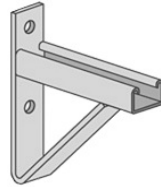
C3373



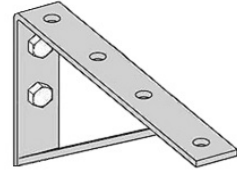
C651



C809



C3282



C732

Beam Clamps

C684S	Beam Clamp	10
C685S	Beam Clamp	10
C686	Beam Clamp	10
C855S	Angular "I" Beam Clamp	15
C2651	U-Bolt Style Clamp - Double Strut	25
C2652	U-Bolt Style Clamp - Single Strut	25
C907S	"I" Beam Clamp	25
C2622	Beam Clamp	25
C2654	Column Bracket	25
C858*	Heavy Duty Clamp - 7/8" Jaw Opening	1
C865*	Heavy Duty Clamp - 1-21/32" Jaw Opening	1
PS86*	C Clamp	1
PS93*	Universal C Clamp - 1-1/4" Jaw Opening	1
PS94*	Wide Throat C Clamp - 1-5/16" Jaw Opening	1

*Specify 3/8", 1/2" or 5/8"



C684S



C685S



C686



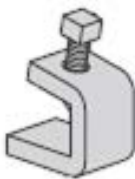
C855S



C2651



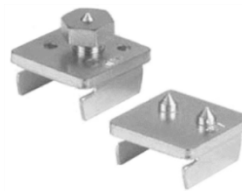
C2652



C907S



C2622



C2654



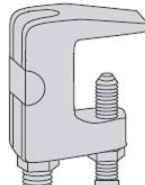
C858



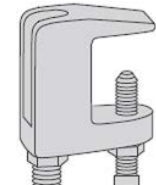
C865



PS86



PS93



PS94