



# T8

## 15T8/COR/48-840/MF21/G 10/1

Our TLEDs are available in InstantFit (Type A / Type C) or MainsFit (Ballast bypass / Type B) versions. The InstantFit lamps work on a broad variety of ballasts and LED drivers. Only InstantFit has over 15,000 lamp & ballast combinations delivering even light output, energy savings and a long lifetime. Our MainsFit products feature a double-ended design, simplifying installation while a proprietary safety circuit minimizes a shock risk. Lamp sizes range from 2-foot to 8-foot and U-bend with a variety of lumen outputs.

### Product data

General Information	
Cap-Base	G13 [ Medium Bi-Pin Fluorescent]
EU RoHS compliant	Yes
Nominal Lifetime (Nom)	50000 h
Switching Cycle	50000X
Technical Type	15-25-28-30-32W
Light Technical	
Color Code	840 [ CCT of 4000K]
Beam Angle (Nom)	240 °
Luminous Flux (Nom)	2100 lm
Color Designation	Cool White (CW)
Correlated Color Temperature (Nom)	4000 K
Luminous Efficacy (rated) (Nom)	140.00 lm/W
Color Consistency	<6
Color Rendering Index (Nom)	82
LLMF At End Of Nominal Lifetime (Nom)	70 %
Operating and Electrical	
Input Frequency	50 to 60 Hz

Power (Nom)	15 W
Lamp Current (Max)	125 mA
Lamp Current (Min)	55 mA
Starting Time (Nom)	0.5 s
Warm Up Time to 60% Light (Nom)	0.5 s
UL Type	Type B - bypass the ballast
Power Factor (Nom)	0.9
Voltage (Nom)	120-277 V
Temperature	
T-Ambient (Max)	45 °C
T-Ambient (Min)	-20 °C
T-Storage (Max)	65 °C
T-Storage (Min)	-40 °C
T-Case Maximum (Nom)	70 °C
Controls and Dimming	
Dimmable	No

# T8

## Mechanical and Housing

Bulb Finish	Frosted
Bulb Material	Glass
Product Length	1200 mm

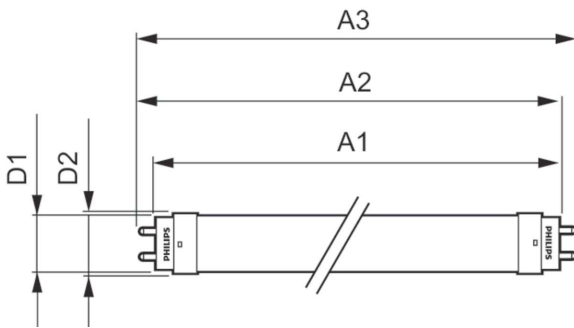
## Approval and Application

Energy Efficiency Label (EEL)	Not applicable
Energy Saving Product	Yes
Approval Marks	RoHS compliance UL certificate DLC compliance
Energy Consumption kWh/1000 h	- kWh

## Product Data

Order product name	15T8/COR/48-840/MF21/G 10/1
EAN/UPC - Product	046677471767
Order code	929002395004
Numerator - Quantity Per Pack	1
Numerator - Packs per outer box	10
Material Nr. (12NC)	929002395004
Net Weight (Piece)	0.215 kg

## Dimensional drawing

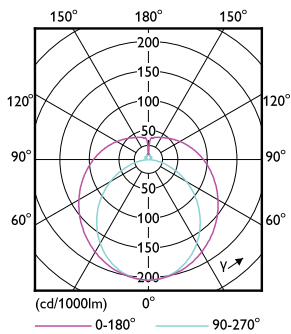


TLED T8 120-277V 15-32W 2100lm 4000K G13

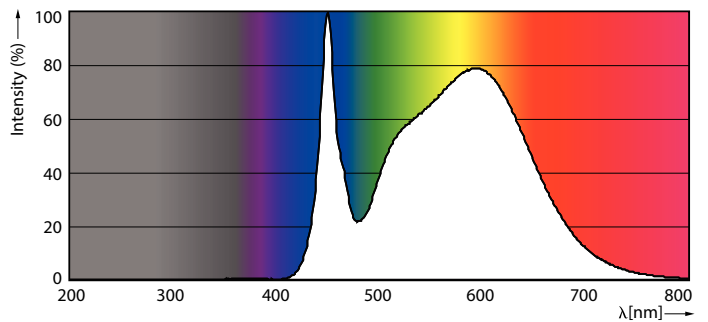
## Product

15T8/COR/48-840/MF21/G 10/1

## Photometric data

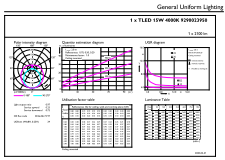


LEDtube G13 COR



LEDtube G13 840 COR

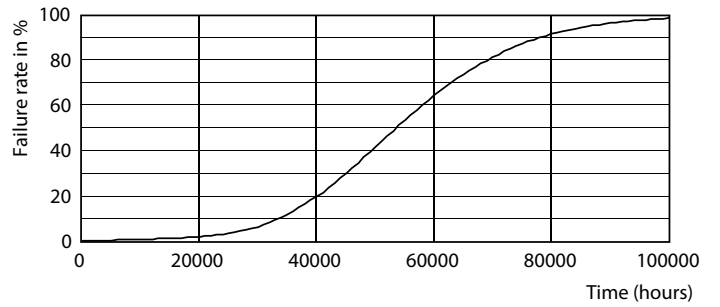
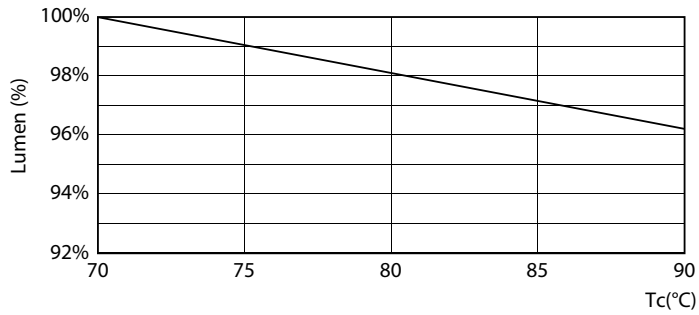
Photometric data



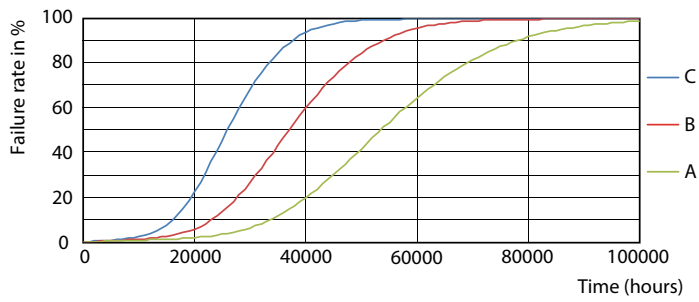
© 2021 Philips Lighting B.V. Page 11

LEDtube 15W G13 2100lm 840

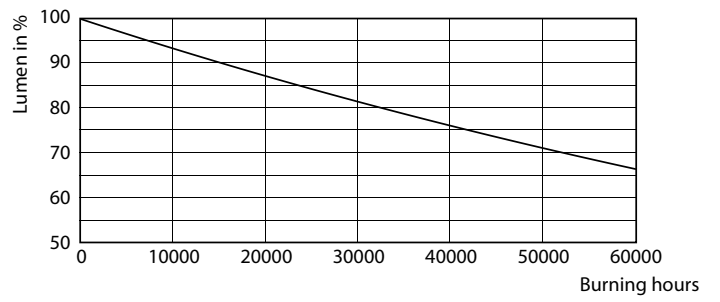
Lifetime



LEDtube 15W 50K LumenVsTc



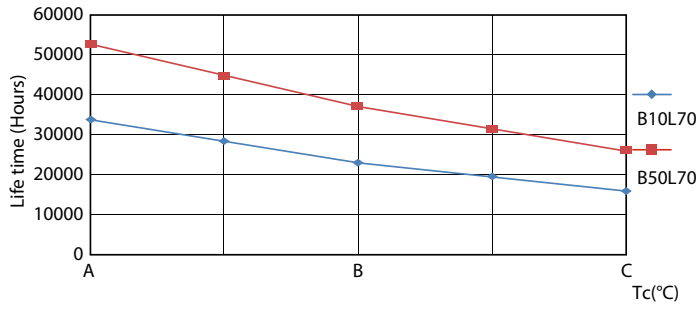
LEDtube 50K-LED



LEDtube 50K FailureRate-LED

LEDtube 50K-LMP

Lifetime



LEDtube 50K LifetimeVsTc-LED

