

NEW

DIAMOND MAX™ DIAMOND GRIT HOLE SAWS

OVERVIEW

Choose the MILWAUKEE® DIAMOND MAX™ Diamond Grit Hole Saw for up to 10X longer life when cutting porcelain, tile, stone, and glass. DIAMOND MAX™ Diamond Grit Hole Saws deliver best-in-class performance, with higher-grade diamonds for maximum heat and fracture resistance. An improved braze provides superior diamond retention when cutting hard, abrasive materials. The DIAMOND MAX™ Threaded Hole Saw features All Access Slot Design for easy plug removal. Designed as the single cutting solution for all tile, stone, and glass applications, DIAMOND MAX™ offers the lowest cost-per-hole on the market. Use it with standard hole saw arbors or with the Angle Grinder Adapter (49-56-7105), or Retractable Starter Bit with Large Arbor (49-56-7135) for even greater productivity and ease of use.



FEATURES

- DIAMOND MAX™: Greater durability and toughness delivers up to 10X longer life
- Higher-grade Diamonds and Improved Braze: Provide best-in-class performance
- All Access Slots: Offers easy plug removal

DIAMOND MAX™ DIAMOND GRIT ONE-PIECE HOLE SAWS

Size	Description	Part No.
3/16"	DIAMOND MAX™ One-Piece Hole Saw	49-56-0503
1/4"	DIAMOND MAX™ One-Piece Hole Saw	49-56-0505
5/16"	DIAMOND MAX™ One-Piece Hole Saw	49-56-0507
3/8"	DIAMOND MAX™ One-Piece Hole Saw	49-56-0509
1/2"	DIAMOND MAX™ One-Piece Hole Saw	49-56-0511
5/8"	DIAMOND MAX™ One-Piece Hole Saw	49-56-0513
3/4"	DIAMOND MAX™ One-Piece Hole Saw	49-56-0515
1"	DIAMOND MAX™ One-Piece Hole Saw	49-56-0517

DIAMOND MAX™ DIAMOND GRIT THREADED HOLE SAWS

Size	Description	Part No.
7/8"	DIAMOND MAX™ Threaded Hole Saw	49-56-5605
1-1/8"	DIAMOND MAX™ Threaded Hole Saw	49-56-5615
1-1/4"	DIAMOND MAX™ Threaded Hole Saw	49-56-5620
1-3/8"	DIAMOND MAX™ Threaded Hole Saw	49-56-5625
1-1/2"	DIAMOND MAX™ Threaded Hole Saw	49-56-5630
2"	DIAMOND MAX™ Threaded Hole Saw	49-56-5645
2-1/2"	DIAMOND MAX™ Threaded Hole Saw	49-56-5660

DIAMOND MAX™ DIAMOND GRIT THREADED HOLE SAW ACCESSORIES

Description	Part No.
1-1/4" – 2-1/2" Angle Grinder Adapter (Large)	49-56-7105
7/8" – 1-1/8" Angle Grinder Adapter (Small)	49-56-7103
1/4" Retractable Starter Bit	49-56-8025
Retractable Starter Bit with Large Arbor	49-56-7135

DIAMOND MAX™ DIAMOND GRIT HOLE SAW SETS

Description	Part No.
3 Pc DIAMOND MAX™ One-Piece Hole Saw Set	49-56-0500
1/4" DIAMOND MAX™ One-Piece Hole Saws (2 pk)	49-56-0501

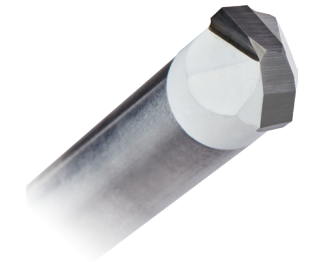
CONCRETE DRILLING & CHISELING

NEW

TILE AND NATURAL STONE BITS

OVERVIEW

MILWAUKEE® Tile and Natural Stone Bits deliver up to 2X life in granite, stone, tile, and glass. Hammer mode capability provides faster drilling speeds when drilling into tile and natural stone. Equipped with an aggressive 8-grind carbide head, these bits deliver up to 20% faster drilling. Reinforced tip protects the carbide head, providing the durability need for hammer drill mode. MILWAUKEE® Tile and Natural Stone Bits can be used in drill-only mode or hammer drill-mode. Not recommended for porcelain tile.



FEATURES

- Up to 2X longer life
- Up to 20% faster drilling in natural stone
- Hammer Mode Capability for Faster Drilling in Granite, Marble, and Stone

TILE AND NATURAL STONE BITS

Description	Part No.
1/8" x 2" Tile and Natural Stone Bit	48-20-8990
3/16" x 2" Tile and Natural Stone Bit	48-20-8991
1/4" x 2-1/4" Tile and Natural Stone Bit	48-20-8992
5/16" x 2-1/4" Tile and Natural Stone Bit	48-20-8993

Description	Part No.
3/8" x 3-3/4" Tile and Natural Stone Bit	48-20-8994
1/2" x 3-3/4" Tile and Natural Stone Bit	48-20-8995
4 Pc Tile and Natural Stone Bit Set (1/8", 3/16", 1/4", 5/16")	48-20-8998

NEW

GLASS AND TILE BITS

OVERVIEW

MILWAUKEE® Glass and Tile Bits use an exact start tip for clean holes and minimal bit walking in glass and ceramic tile. Created with sharpened carbide, MILWAUKEE® Glass and Tile Bits will provide faster tile drilling than standard glass and tile bits. These bits are designed with a reinforced carbide head for increased durability when drilling in high speed. Ideal for glass and ceramic tile in drill/drivers only. Not recommended for porcelain tile.



FEATURES

- Exact Start Tip for minimal bit walking
- Reinforced Carbide Head for increased durability
- For use in glass and ceramic tile

CONCRETE DRILLING & CHISELING

GLASS AND TILE BITS

Description	Part No.
1/8" x 2" Glass and Tile Bit	48-20-8980
3/8" x 2" Glass and Tile Bit	48-20-8981
1/4" x 2-1/4" Glass and Tile Bit	48-20-8982
5/16" x 2-1/4" Glass and Tile Bit	48-20-8983

Description	Part No.
3/8" x 3-3/4" Glass and Tile Bit	48-20-8984
1/2" x 3-3/4" Glass and Tile Bit	48-20-8985
4 Pc Glass and Tile Bit Set (1/8", 3/16", 1/4", 5/16")	48-20-8988

NEW
SHOCKWAVE™ MULTI-MATERIAL BITS
OVERVIEW

MILWAUKEE® SHOCKWAVE™ Carbide Multi-Material Drill Bits are the most versatile bits, designed to tackle materials such as brick, block, concrete, tile, wood, aluminum, PVC, steel, and more. The aggressive multi-grind carbide tip delivers up to 10X longer life in stacked materials and up to 85% faster drilling speeds in metal. Equipped with a 1/4" hex shank, these bits are compatible in impacts, drill/drivers, and hammer drills. MILWAUKEE® SHOCKWAVE™ Multi-Material Drill Bits provide the ideal all-in-one solution for the widest variety of materials, tools, and applications.


FEATURES

- For use with brick, block, concrete, steel, aluminum, ceramic tile, backerboard, wood, PVC, and drywall
- Up to 85% faster in metal vs. standard masonry drill bits
- SHOCKWAVE™ Impact Duty engineered for hammer drills and impacts

SHOCKWAVE™ MULTI-MATERIAL BITS

Diameter	Usable Length	Length	Part No.
1/8"	2"	3-1/2"	48-20-8880
5/32"	4"	6"	48-20-8882
3/16"	4"	6"	48-20-8884
1/4"	4"	6"	48-20-8886
5/16"	4"	6"	48-20-8888

Diameter	Usable Length	Length	Part No.
3/8"	4"	6"	48-20-8890
1/2"	4"	6"	48-20-8892

SHOCKWAVE™ MULTI-MATERIAL BIT SET

Description	Part No.
5 Pc SHOCKWAVE™ Multi-Material Drill Bit Set (5/32", 3/16", 1/4", 5/16", 3/8")	48-20-8898

NEW
CARBIDE HAMMER DRILL BITS
OVERVIEW

MILWAUKEE® SHOCKWAVE™ Carbide Hammer Drill Bits use sharpened carbide, delivering up to 5X life in concrete and up to 2X faster drilling. Engineered with a precision ground tip, these bits will deliver faster starts and less walking in concrete, brick, block, and masonry. Wide flute design removes dust faster, reducing heat and delivering more holes per charge. The extended life of the MILWAUKEE® SHOCKWAVE™ Carbide Hammer Drill Bits provides the ideal solution in concrete, brick, and block for cordless and corded hammer drill/drivers.



UP TO
5X
LIFE
IN CONCRETE

FEATURES

- Up to 5X life in concrete
- Up to 2X faster versus standard masonry bits
- Durable Carbide Tip for longer life in concrete and hard aggregate

CARBIDE HAMMER DRILL BITS

Diameter	Usable Length	Length	Shank Type	1 Pack	5 Pack	25 Pack
1/8"	2"	3-1/2"	1/4" Hex	48-20-9000	-	48-20-9100
5/32"	4"	6"	1/4" Hex	48-20-9001	48-20-9155	48-20-9101
3/16"	2"	4"	1/4" Hex	48-20-9005	-	48-20-9105
3/16"	4"	6"	1/4" Hex	48-20-9006	48-20-9157	48-20-9106
7/32"	4"	6"	1/4" Hex	48-20-9009	-	-
1/4"	2"	4"	1/4" Hex	48-20-9010	-	48-20-9110
1/4"	4"	6"	1/4" Hex	48-20-9011	48-20-9162	48-20-9111
1/4"	10"	12"	3-Flat	48-20-9012	-	-
5/16"	4"	6"	1/4" Hex	48-20-9016	-	48-20-9116
5/16"	8"	10"	3-Flat	48-20-9018	-	-
5/16"	10"	12"	3-Flat	48-20-9017	-	-
3/8"	4"	6"	1/4" Hex	48-20-9021	-	48-20-9121
3/8"	10"	12"	3-Flat	48-20-9022	-	-
3/8"	16"	18"	3-Flat	48-20-9023	-	-
7/16"	4"	6"	1/4" Hex	48-20-9025	-	48-20-9125
1/2"	4"	6"	1/4" Hex	48-20-9030	-	48-20-9130
1/2"	10"	12"	3-Flat	48-20-9031	-	-
1/2"	16"	18"	3-Flat	48-20-9032	-	-
9/16"	4"	6"	3-Flat	48-20-9035	-	-
5/8"	4"	6"	3-Flat	48-20-9040	-	-
5/8"	10"	12"	3-Flat	48-20-9041	-	-
5/8"	16"	18"	3-Flat	48-20-9042	-	-
3/4"	4"	6"	3-Flat	48-20-9045	-	-
3/4"	10"	12"	3-Flat	48-20-9046	-	-
7/8"	4"	6"	3-Flat	48-20-9047	-	-
7/8"	10"	12"	3-Flat	48-20-9048	-	-
1"	4"	6"	3-Flat	48-20-9049	-	-
1"	10"	12"	3-Flat	48-20-9054	-	-

CARBIDE HAMMER DRILL BIT SETS

CARBIDE HAMMER DRILL BIT SETS		
Description	Includes	Part No.
3 Pc SHOCKWAVE™ Carbide Hammer Drill Bit Set	(1) 5/32" x 4" x 6" SHOCKWAVE™ Carbide Hammer Drill Bit (1) 3/16" x 4" x 6" SHOCKWAVE™ Carbide Hammer Drill Bit (1) 1/4" x 4" x 6" SHOCKWAVE™ Carbide Hammer Drill Bit	48-20-9050
5 Pc SHOCKWAVE™ Carbide Hammer Drill Bit Set	(1) 5/32" x 4" x 6" SHOCKWAVE™ Carbide Hammer Drill Bit (1) 3/16" x 4" x 6" SHOCKWAVE™ Carbide Hammer Drill Bit (1) 1/4" x 4" x 6" SHOCKWAVE™ Carbide Hammer Drill Bit (1) 5/16" x 4" x 6" SHOCKWAVE™ Carbide Hammer Drill Bit (1) 3/8" x 4" x 6" SHOCKWAVE™ Carbide Hammer Drill Bit	48-20-9051
7 Pc SHOCKWAVE™ Carbide Hammer Drill Bit Set	(1) 5/32" x 4" x 6" SHOCKWAVE™ Carbide Hammer Drill Bit (2) 3/16" x 4" x 6" SHOCKWAVE™ Carbide Hammer Drill Bit (2) 1/4" x 4" x 6" SHOCKWAVE™ Carbide Hammer Drill Bit (1) 5/16" x 4" x 6" SHOCKWAVE™ Carbide Hammer Drill Bit (1) 3/8" x 4" x 6" SHOCKWAVE™ Carbide Hammer Drill Bit	48-20-9052
7 Pc Large SHOCKWAVE™ Carbide Hammer Drill Bit Set	(1) 1/8" x 2" x 3-1/2" SHOCKWAVE™ Carbide Hammer Drill Bit (1) 5/32" x 4" x 6" SHOCKWAVE™ Carbide Hammer Drill Bit (1) 3/16" x 4" x 6" SHOCKWAVE™ Carbide Hammer Drill Bit (1) 1/4" x 4" x 6" SHOCKWAVE™ Carbide Hammer Drill Bit (1) 5/16" x 4" x 6" SHOCKWAVE™ Carbide Hammer Drill Bit (1) 3/8" x 4" x 6" SHOCKWAVE™ Carbide Hammer Drill Bit (1) 1/2" x 4" x 6" SHOCKWAVE™ Carbide Hammer Drill Bit	48-20-9057

SDS PLUS
NEW MX4™ 4-CUTTER SDS PLUS BITS
OVERVIEW

Our MX4™ 4-Cutter SDS PLUS Rotary Hammer Drill Bits with solid head carbide deliver up to 5X longer life in concrete with rebar. Engineered with rebar guards to provide maximum durability in hard aggregate and rebar. We designed our MX4™ 4-Cutter bits with sharp centering tips for exact spot drilling in concrete and metal decking. 4-cutter design prevents lock-up in rebar, reducing downtime. Variable flutes remove dust faster, reducing heat and delivering up to 20% more holes per battery charge. The wear mark indicator on each drill bit shows you when they no longer meet the ANSI requirement. These MILWAUKEE® MX4™ 4-Cutter Drill Bits are ideal for concrete with rebar and masonry applications. Choose from single bits, bulk packs, or drill bit kits in a variety of sizes.



**UP TO
5X
LIFE
IN REBAR**

FEATURES

- Solid Head Carbide delivers up to 5X longer life in concrete with rebar
- Rebar Guards for maximum durability in hard aggregate and rebar
- Sharp Centering Tip for exact spot drilling in concrete and metal decking

MX4™ 4-CUTTER SDS PLUS BITS

Diameter	Usable Length	Length	1 Pack	Bulk	Monster Pack
5/32"	4"	6"	48-20-7308	-	-
3/16"	2"	4"	48-20-7310	48-20-7910 (15 pk)	-
3/16"	4"	6"	48-20-7311	48-20-7911 (15 pk)	48-20-7990 (100 pk)
3/16"	6"	8"	48-20-7312	48-20-7912 (15 pk)	-
3/16"	8"	10"	48-20-7313	-	-
3/16"	10"	12"	48-20-7314	-	-
1/4"	2"	4"	48-20-7330	48-20-7930 (15 pk)	-
1/4"	4"	6"	48-20-7331	48-20-7931 (15 pk)	48-20-7994 (100 pk)
1/4"	6"	8"	48-20-7332	48-20-7932 (15 pk)	-
1/4"	8"	10"	48-20-7334	-	-
1/4"	10"	12"	48-20-7335	-	-
5/16"	4"	6"	48-20-7341	48-20-7941 (15 pk)	-
5/16"	10"	12"	48-20-7344	-	-
3/8"	4"	6"	48-20-7351	48-20-7951 (10 pk)	-
3/8"	10"	12"	48-20-7354	48-20-7954 (10 pk)	-
3/8"	16"	18"	48-20-7357	-	-
7/16"	4"	6"	48-20-7361	-	-
7/16"	10"	12"	48-20-7364	-	-
1/2"	4"	6"	48-20-7371	48-20-7971 (10 pk)	-
1/2"	10"	12"	48-20-7374	48-20-7974 (10 pk)	-
1/2"	16"	18"	48-20-7377	-	-

Diameter	Usable Length	Length	1 Pack	Bulk	Monster Pack
9/16"	4"	6"	48-20-7381	-	-
9/16"	10"	12"	48-20-7384	-	-
9/16"	16"	18"	48-20-7387	-	-
5/8"	6"	8"	48-20-7200	-	-
5/8"	10"	12"	48-20-7203	-	-
5/8"	16"	18"	48-20-7206	-	-
3/4"	6"	8"	48-20-7210	-	-
3/4"	8"	10"	48-20-7212	-	-
3/4"	10"	12"	48-20-7215	-	-
3/4"	16"	18"	48-20-7220	-	-
7/8"	6"	8"	48-20-7225	-	-
7/8"	8"	10"	48-20-7228	-	-
7/8"	10"	12"	48-20-7230	-	-
7/8"	16"	18"	48-20-7236	-	-
1"	8"	10"	48-20-7240	-	-
1"	16"	18"	48-20-7246	-	-
1-1/8"	8"	10"	48-20-7250	-	-
1-1/8"	16"	18"	48-20-7256	-	-
1-1/4"	16"	18"	48-20-7266	-	-

This product complies with ANSI B212.15 standard