



FL2-LED31

LED Flood Light



SPECIFICATIONS*

Watts	30.39
Lumens	3929
Efficacy	129.29
Replaces Up To	500 W Quartz
Colour Temp**	4000K*, 5000K*
Certification	cULus, IP65, DLC
Operating Temp	-40°C to +40°C
Voltage	120-277*
LED Life	100,000 hours
Housing Material	Die Cast Aluminum
Lens Material	Polycarbonate
Lens Type	Clear
Total Harmonic Distortion	17.33
Power Factor	0.928

*Standard



Yoke Mount



DESCRIPTION

The FL2-LED31 is an energy efficient LED flood that replaces a 500W Quartz fixture.

APPLICATIONS



Building
Facades



Patios & Yards



Landscape
Lighting



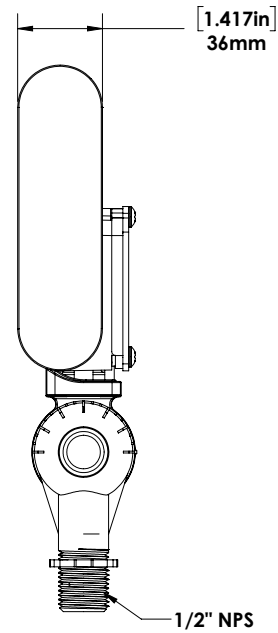
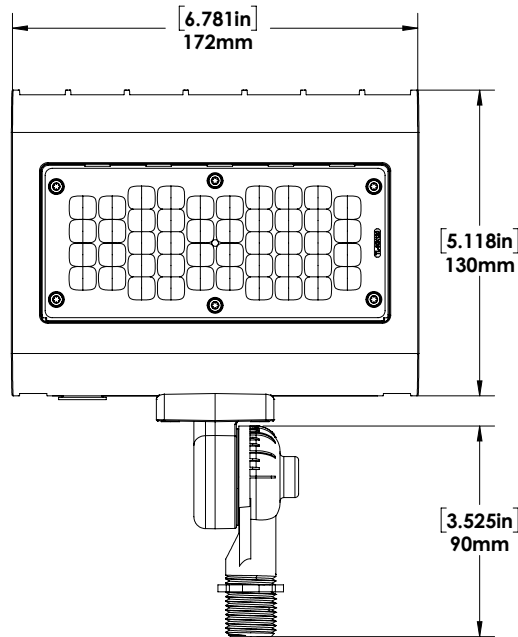
Sign Lighting

FEATURES

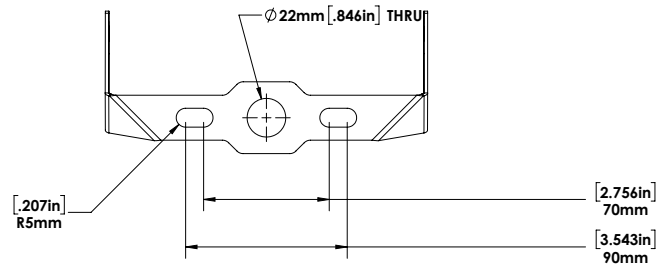
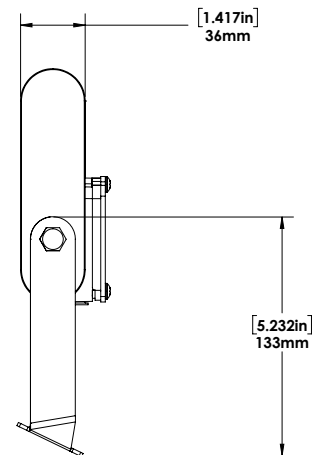
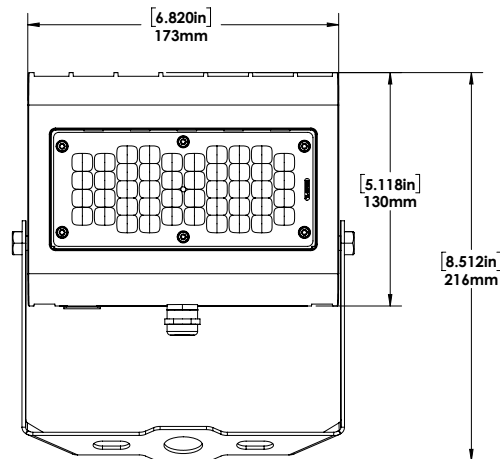
- Die cast aluminum housing with polycarbonate lens.
- Wide 7H X 7V beam is standard.
- Available as a knuckle or yoke mount. Also used as a sign light when combined with various arms.
- Available in 4K or 5K colour temperature.
- Ideal replacement for 500W Quartz floods.

*The above specs apply to the standard product configuration. For spec information on other product configurations please see page 2.

DIMENSIONS



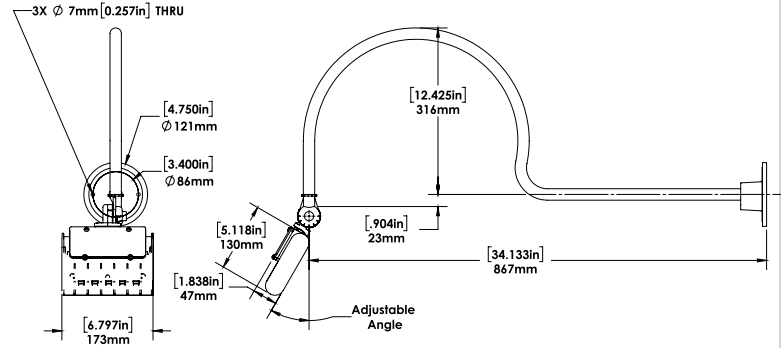
Knuckle Mount



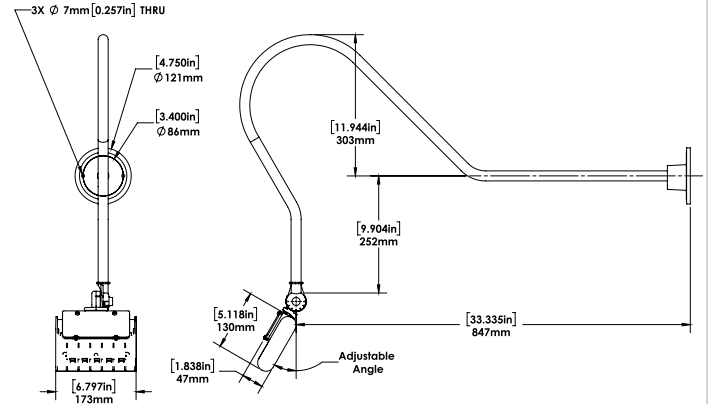
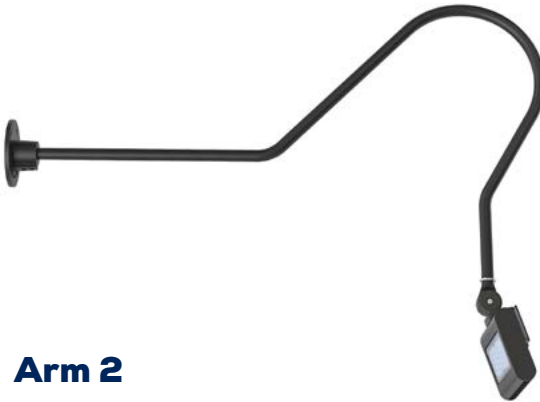
Yoke Mount

SIGN LIGHT DIMENSIONS

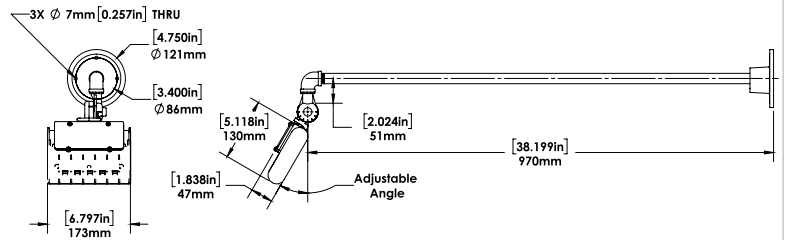
Arm 1



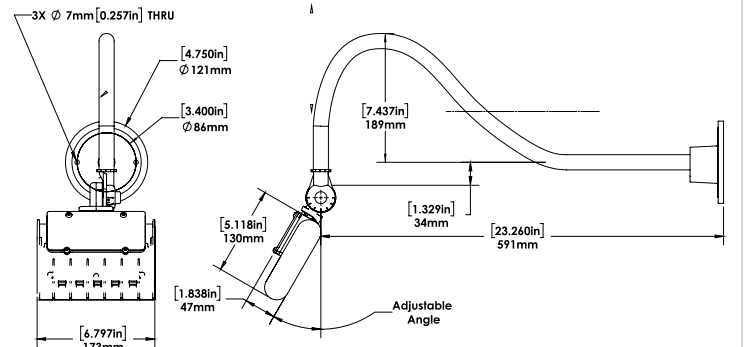
Arm 2



Arm 3



Arm 5



OTHER MODEL SPECIFICATIONS

DESCRIPTION	VOLTAGE (V)	INPUT POWER (W)	LIGHT OUTPUT	EFFICACY (Lm/W)	THD	PF	CCT	CRI
FL2-LED31-B-4K-XXX-XX	120-277V	30.39	3929	129.29	17.33	0.928	4000	71.9
FL2-LED31-B-5K-XXX-XX	120-277V	30.39	3976	130.83	17.33	0.928	5000	71.9

LEGEND

B - 120V-277V
 4K - 4000K, 5K - 5000K
 XXX - FINISH
 XX - MOUNTING

ORDERING GUIDE

1. FLOOD LIGHT

FL2	LED31				
WATTS	VOLTAGE	COLOUR TEMP.	FINISH	MOUNTING	
	B - 120 - 277V*	4K - 4000K* 5K - 5000K*	BRZ - BRONZE*	KN - KNUCKLE MOUNT* YK - YOKE MOUNT*	

2. SIGN LIGHT

FL2	LED31					
WATTS	VOLTAGE	COLOUR TEMP.	FINISH	MOUNTING	ARM	
	B - 120 - 277V*	4K - 4000K* 5K - 5000K*	BRZ - BRONZE CC - CUSTOM COLOUR	KN - KNUCKLE MOUNT	ARM1 ARM2 ARM3 ARM5	

*Standard Configuration.