

Beacon360 Torch Battery Operated

The new Beacon360 Torch Battery Operated worklight is the most versatile & portable work light available. This light comes with four lighting modes, plus a built-in magnet and a built-in hook to best adjust to your task. Boasting a durable exterior and an IP65 weatherproof rating, the applications are endless for this must need product in every contractors toolbox.

KEY FEATURES

- Compact and easily transportable
- LEDs will last over 50,000 hours.
- No bulb replacement required.
- IP65 weatherproof rated
- Instant start-up, at full output, even in cold temperatures.
- Charge with car DC charger, or an AC wall charger
- Built-in hanging hook and magnets for versatile placement



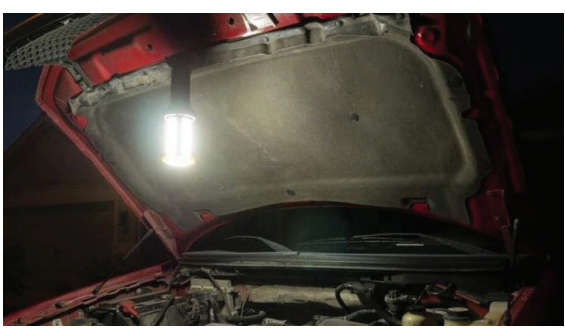
LE360LEDHC
battery operated worklight
with 4 light settings

KEY BENEFITS

- Exceeds military grade drop test requirements
- Innovative & futuristic design
- Replaces all existing worklights
- Extremely versatile light for multiple applications

KEY INDUSTRIES/APPLICATIONS

- General Contractors
- Electrical Contractors
- DIY Handyman
- Mechanical Contractors



SPECIFICATIONS	
Voltage	90-277V • 0.12A @ 120V
Wattage	15W
Light Temperature	5,000K (white light)
Lumens	360° High - 1,100 lumens 360° Low - 500 lumens 180° Mode - 300 lumens Flashlight Mode - 320 lumens
Light Expectancy	Over 50,00 hours of 24/7 use
Construction	Rubber handle & bumpers & aluminum heat sink
Dimensions & Weight	11.5"H x 3.32"D • 2.3 lbs
Weatherproof Rating	IP65
Run Time	360° High - 4 hours 360° Low - 8 hours 180° Mode - 10 hours Flashlight Mode - 10 hours

