

Accessories - Overload

Class 10 - Overload

Current Range	Maximum Fuse	Maximum Circuit Breaker Rating Amps	Product Number
0.16-0.26	1	15	RT1B
0.25-0.41	1	15	RT1C
0.4-0.65	3	15	RT1D
0.65-1.1	6	15	RT1F
1-1.5	6	15	RT1G
1.3-1.9	6	15	RT1H
1.8-2.7	10	15	RT1J
2.5-4.1	15	15	RT1K
4-6.3	20	15	RT1L
5.5-8.5	25	15	RT1M
8.0-12.0	40	30	RT1N
10.0-16.0	50	35	RT1P
14.5-18	60	40	RT1S
17.5-22	70	50	RT1T
21-26	80	60	RT1U
25-32	100	80	RT1V
30-40	100	80	RT1W

Factory assembled DP starters are available. Please refer to Control Catalog.

Class 20 - Overload

Current Range	Maximum Fuse	Maximum Circuit Breaker Rating Amps	Product Number
2.5-4.1	15	15	RT12K
4-6.3	20	15	RT12L
5.5-8.5	25	15	RT12M
8.0-12.0	40	30	RT12N
10.0-16.0	50	35	RT12P
14.5-18	60	40	RT12S
17.5-22	70	50	RT12T
21-26	80	60	RT12U
25-32	100	80	RT12V
30-40	100	80	RT12W



Overload Relay

Accessories – Auxiliary Contact Kits

Type	Mounting	Circuit	Product Number	Rating
250 VAC Auxiliary Contact	Side	SPDT	CR553XC211	11 A, 1/3 HP at 250 VAC; 1/2 A at 125 VDC; 1/4 A at 250 VDC
	Side	2 SPDT	CR553XC222	
600 VAC Auxiliary Contact	Front	1 NO	BCLF10	A600, Q600 Pilot Duty
	Front	1 NC	BCLF01	
	Side	1 NO, 1 NC	BCLL11	
	Side	2 NO	BCLL20	
Mechanical Interlock	-	2 NC	BEL02 includes 2 built-in NC contacts	A600, Q600 Pilot Duty

Spare Coils

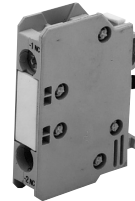
Coil Voltage	Product Number	
	2/3 Pole 25-30FLA	2/3 Pole 40FLA 4 Pole 25-40FLA
110-120V 50/60Hz	DB1AA	DB3AA
208-240V 50/60Hz	DB1AB	DB3AB
440-480V 60Hz	DB1AC	DB3AC
380-415V 50Hz		
550-600V 50/60Hz	DB1AD	DB3AD
12V 50/60Hz	DB1AE	DB3AE
277V 60Hz	DB1AF	DB3AF
24V 50/60Hz	DB1AH	DB3AH



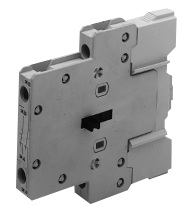
250V Auxiliary Contact Kits



Side-Mount 600V Auxiliary Contact Block



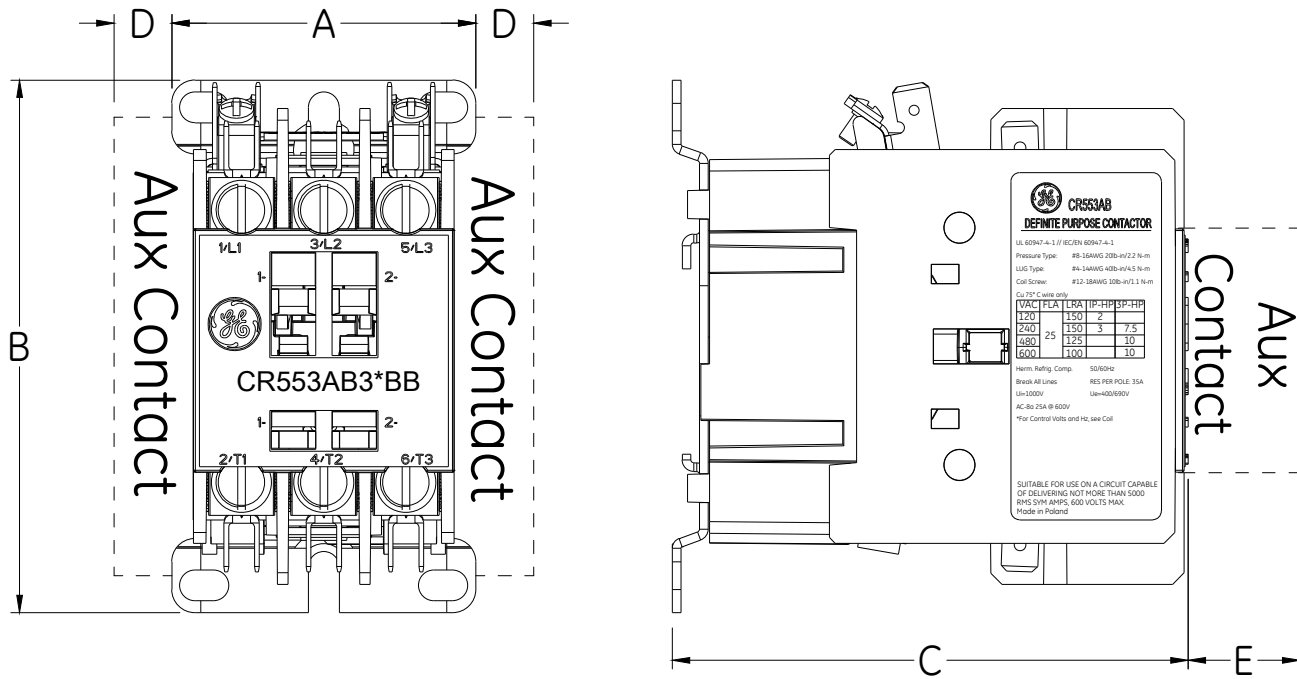
Front-Mount 600V Auxiliary Contact Block



Mechanical Interlock

Outline

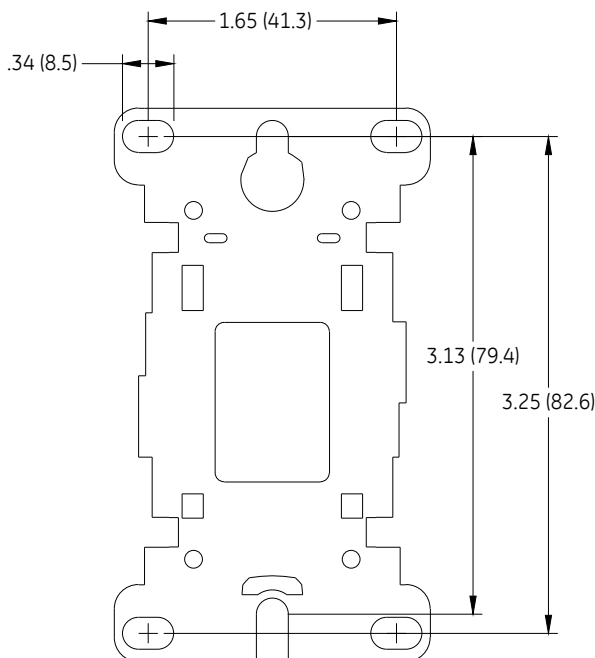
Approximate Dimensions in (mm)



Amp	Poles	A	B	C	D		E
					250V	600V	
25, 30Amp	2, 3	2.07 (53)	3.75 (96)	3.50 (89)	0.55 (14)	0.28 (7)	1.1 (28)
40 Amp	2, 3	2.24 (57)	3.75 (96)	4.02 (102)	0.71 (18)	0.43 (11)	1.1 (28)
25 / 30 / 40Amp	4	2.24 (57)	4.00 (101)	4.02 (102)	0.71 (18)	0.43 (11)	1.1 (28)

CR554 series - FACTORY Assembled Starter
 CR555 series - 2-speed Contactors

Mounting Dimensions



Refer to Control Catalog GEP-1260 for assembled DP starter, 2-speed contactor version

Visit our Definite Purpose Contactor information page at

www.geindustrial.com/products/contactors/definite-purpose-contactors



GE
Industrial Solutions
41 Woodford Avenue
Plainville, CT 06062
1-800-431-7867
www.geindustrial.com

Information provided is subject to change without notice. Please verify all details with GE. All values are design or typical values when measured under laboratory conditions, and GE makes no warranty or guarantee, express or implied, that such performance will be obtained under end-use conditions.

4.15 DET-833B