

M18 FUEL™ STRING TRIMMER w/ QUIK-LOK™

2825-21ST, 2825-20ST

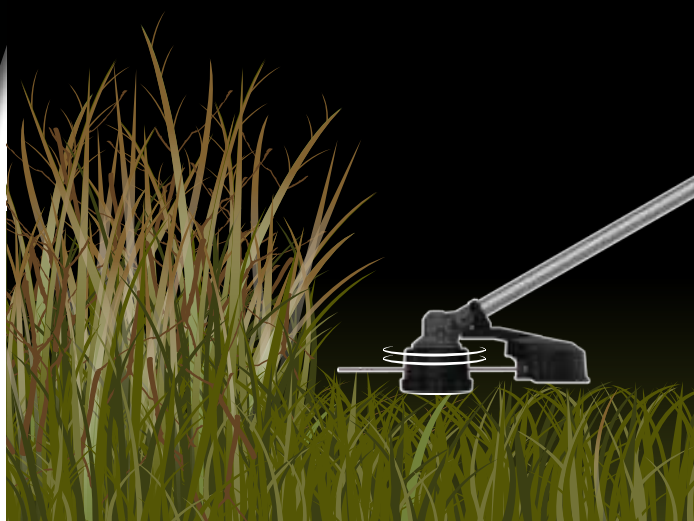


QUIK-LOK™ ATTACHMENT
CAPABLE



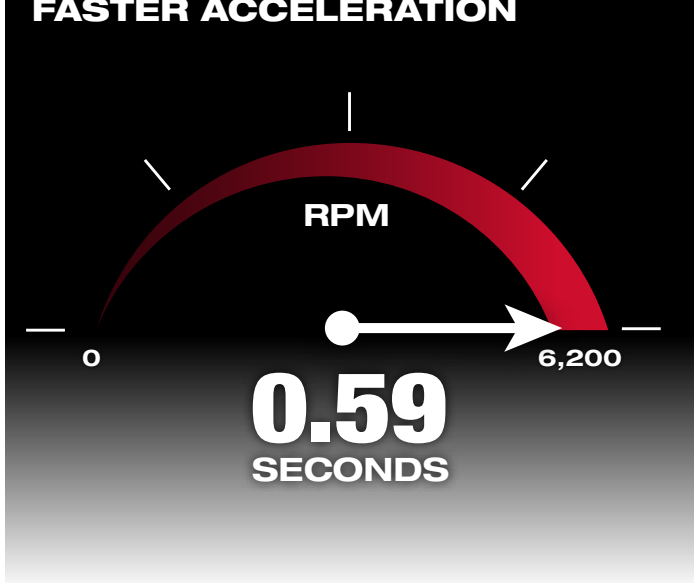
REDLITHIUM
HD9.0

MORE POWER



**POWER
TO CLEAR
THICK BRUSH**

FASTER ACCELERATION



**FULL THROTTLE
UNDER
1 SECOND**

MORE WORK PER CHARGE



**UP TO
1 HOUR
PER CHARGE**

String Trimmer w/ QUIK-LOK™

DESCRIPTION	SPECIFICATIONS
Cutting Swath	14" – 16"
Line Diameter	.080" / .095"
RPM	0 – 4,900 / 0 – 6,200
Trigger	Variable Speed
Feed System	Bump Feed
Length	73.6"
Weight	12.3 lbs



2825-21ST M18 FUEL™ String Trimmer Kit w/ QUIK-LOK™

Includes: 2825-20 M18 FUEL™ Power Head w/ QUIK-LOK™, 49-16-2717 QUIK-LOK™ String Trimmer Attachment, M18™ REDLITHIUM™ HD9.0 Battery Pack, M18™ and M12™ Rapid Charger

SHOP NOW



2825-20ST M18 FUEL™ String Trimmer w/ QUIK-LOK™ (Tool-Only)

Includes: 2825-20 M18 FUEL™ Power Head w/ QUIK-LOK™, 49-16-2717 QUIK-LOK™ String Trimmer Attachment

SHOP NOW

M18 FUEL™
10" POLE SAW
w/ QUIK-LOK™

2825-21PS



QUIK-LOK™ ATTACHMENT CAPABLE



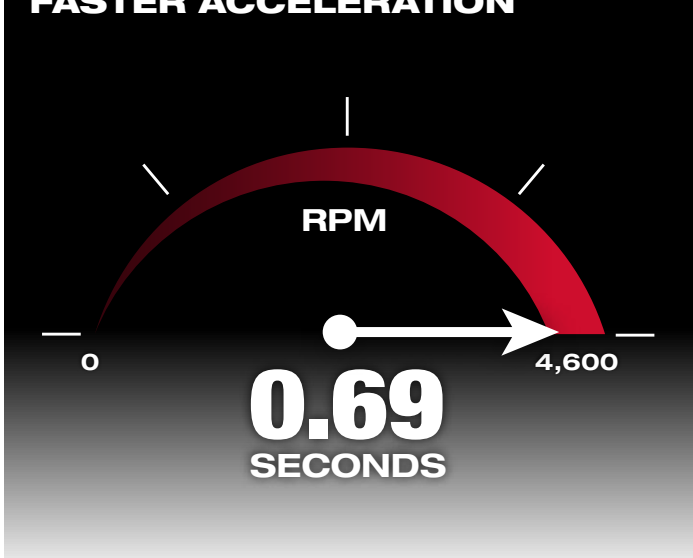
REDLITHIUM™
HD9.0

MORE POWER



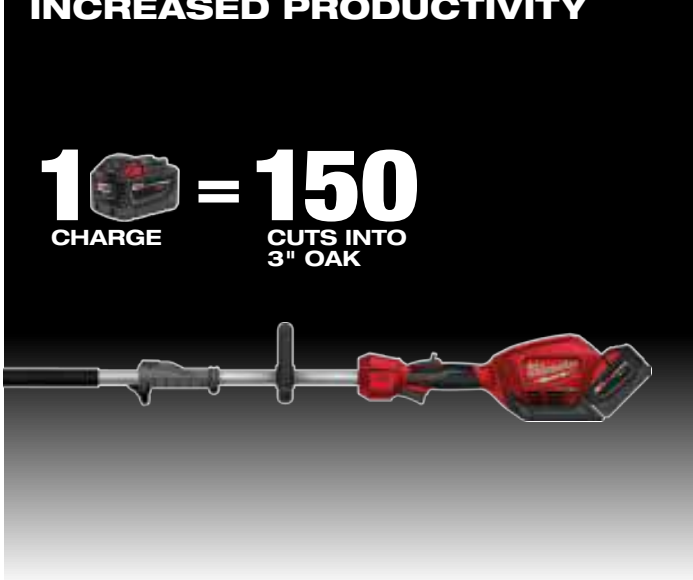
POWER
TO CUT
HARDWOODS

FASTER ACCELERATION



FULL THROTTLE
UNDER
1 SECOND

INCREASED PRODUCTIVITY



UP TO
150 CUTS
PER CHARGE

10" Pole Saw
w/ QUIK-LOK™

DESCRIPTION	SPECIFICATIONS
RPM	0 – 4,600
Bar Length	10"
Chain Gauge	.043"
Chain Pitch	3/8" Low Profile™
Length	84.0"
Weight	12.7 lbs



2825-21PS
M18 FUEL™ 10" Pole Saw
Kit w/ QUIK-LOK™

Includes: 2825-20 M18 FUEL™ Power Head w/ QUIK-LOK™, 49-16-2720 QUIK-LOK™ 10" Pole Saw Attachment, 49-16-2721 QUIK-LOK™ 3' Attachment Extension, M18™ REDLITHIUM™ HD9.0 Battery Pack, M18™ and M12™ Rapid Charger, OREGON® Bar and Chain, Srench

Bar and Chain Oil Sold Separately

SHOP NOW