

FLEX2CODE™ Pin Adaptors

CONDUCTOR RANGE 1000kcmil - #6 AWG

- 30% more compact than the competition
- cULus listed with over 50 tools
- Also qualified with 4 point tools
- Single crimp required for installation
- Rated for power and grounding



TOOLS QUALIFIED TO CRIMP **FLEX2CODE™**

	ILSCO	Burndy	Greenlee	T&B	Harger	Anderson	UTILCO	Ridgid
DIELESS TOOLS	IDT-6	PAT644 series	1990	TBM8-750M Series	MCT81/0	VC6 series	BLL-4PT	RE-6
	IDT-6H	PAT81	EK06FT				UM-4PT	
	IDTB-6 series	Y644 series	EK12ID				UR-4PT	
	IDT-12	Y81 series	HK06FT					
	IDT-12H		HK12ID					
	IDT-12-N		RK06FT					
	IDTB-12							
	IVTB-6 series							
	MT-25							
	TM-6DF1000							
	TR-6DF1000							
	TB-6DF1000-P							
DIE TAKING TOOLS	IILC-10-N	PAT750 series	EK1240	13100A			BLL-U42	RE-12M
	IILC-12 series	Y35 series	EK1550	TBM14 series			UM-U42	
	IILC-14 series	Y39 series	HK1240				UR-U42	
	IILC-750	Y46 series	RK1240					
	IILCB-12-N	Y750 series	RK1550					
	IILCB-12 series							
	94285							
	IILC-15 series							
	TM-12U1000							
	TR-12U1000							
	TB-12U1000-P							

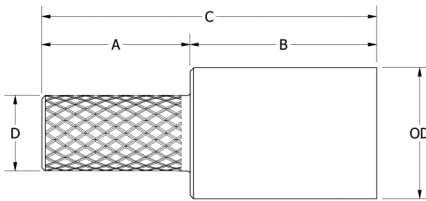
**TYPE
F2C**

Features

- All copper adaptor design
- Compact design, smallest in the industry
- Only requires one crimp
- Certified with ILSCO and major competitor's tools
- Supplied with insulating cover
- UL486A/B Listed for 600V, 90° C
- UL467 Listed for direct bury 500 kcmil - 6 AWG
- Color coded
- Chamfered entry
- Electro-tin plated

Benefits

- Allows flex conductors to be used with equipment rated for code conductors
- Saves space inside electrical panels
- Saves installation time
- Reduces inventory requirements
- Insulates conductor surface
- Ensures reliability
- For grounding and bonding applications
- Identifies the proper compression die
- For easy conductor insertion
- Provides low contact resistance



Front

Back

Catalog Number	Pin Size	Flex Conductor Range	Expanded Conductor Range Class B/C Only	Dimensions				Die Color	Die Index	Cover	OD
				A	B	C	D				
F2C-4-4	#4	#4 FLEX	3-6 AWG	.750	1.075	1.825	.204	White	I-29	PCC-2	.375
F2C-2-2	#2	#2 FLEX	1-6 AWG	.750	1.138	1.880	.258	Green	I-37	PCC-3	.468
F2C-1-1	#1	#1 FLEX	1/0-6 AWG	.750	1.138	1.880	.289	Pink	I-42	PCC-4	.515
F2C-1/0-1/0	1/0	1/0 FLEX	2/0-4 AWG	.870	1.200	2.070	.325	Black	I-45	PCC-5	.562
F2C-2/0-2/0	2/0	2/0 FLEX	3/0 - 2 AWG	.870	1.263	2.133	.365	Orange	I-50	PCC-5	.609
F2C-3/0-3/0	3/0	3/0 FLEX	4/0 - 1 AWG	.900	1.263	2.163	.410	Purple	I-54	PCC-6	.687
F2C-4/0-4/0	4/0	4/0 FLEX	250 kcmil - 1/0 AWG	1.000	1.325	2.325	.460	Yellow	I-62	PCC-7	.750
F2C-250-250	250 kcmil	250 G,H FLEX	300 kcmil - 2/0 AWG	1.100	1.325	2.425	.500	White	I-66	PCC-7	.812
F2C-262-250	250 kcmil	250 I,K,M FLEX 262.2 DLO	350 kcmil - 3/0 AWG	1.100	1.388	2.488	.500	Red	I-71	PCC-8	.890
F2C-313-350	350 kcmil	300 FLEX 313.1 DLO	400 kcmil - 4/0 AWG	1.250	1.450	2.700	.592	Blue	I-76	PCC-9	.937
F2C-373-350	350 kcmil	350 FLEX 373.7 DLO	500 kcmil - 250 kcmil	1.250	1.638	2.888	.592	Brown	I-87	PCC-9	1.062
F2C-444-500	500 kcmil	400 FLEX 444.4 DLO	600 kcmil - 250 kcmil	1.500	1.638	3.138	.707	Green	I-94	PCC-10	1.187
F2C-535-500	500 kcmil	500 FLEX 535.3 DLO	700 kcmil - 350 kcmil	1.500	1.888	3.388	.707	Pink	I-99	PCC-11	1.250
F2C-646-600	600 kcmil	600 FLEX 646.4 DLO	750 kcmil - 500 kcmil	1.500	1.888	3.388	.775	Black	I-106	PCC-12	1.313
F2C-777-750	750 kcmil	750 FLEX 777.7 DLO	1000 kcmil - 750 kcmil	1.700	2.138	3.838	.866	White	I-125	PCC-12	1.500

All wire sizes, unless noted otherwise, are American Wire Gauge (AWG)
Expanded conductor ranges only valid when installed with specified dieless tools
Unless otherwise noted FLEX includes G,H,I,K,M and DLO
Tested to UL486A/B, UL File #E6252
Tested to UL467, UL File E34440 (500kcmil - 6 AWG only)