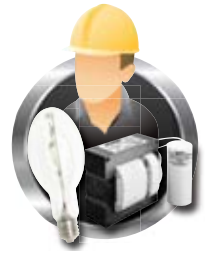


TECHNICAL INFORMATION BULLETIN

LAMP AND BALLAST KIT



Ordering Information

Order code: 61013

ANSI code: S54

Description: LBK/BHPS0100/TRITAP/C/HX/MOG

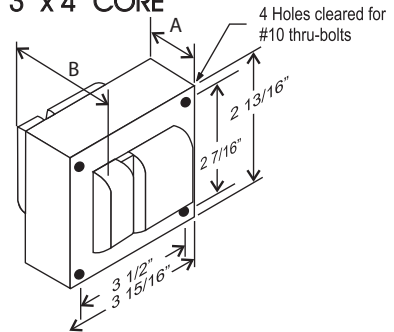
System: High Pressure Sodium

UPC: 69549610132

Ballast Information

Line Voltage	120/277/347V		
Regulation	+/-5%		
Line Volts	WITHIN TRAPEZOID		
Line Watts			
Frequency	60 Hz		
Circuit Type	HX-HPF		
Power Factor (min)	90%		
Insulation Class	H(180°)		
Min. Ambient Starting Temp.	-40° F or -40° C		
Line Voltage (Volts)	120	277	347
Line Current (Amps)			
Operating	1.14	0.49	0.39
Open Circuit	2.00	0.85	0.69
Starting	1.10	0.47	0.36
Input Watts (W)	128	128	128
Open Circuit Voltage (V)	120	120	120
Drop Out Voltage (V)	96	222	277
UL(1029) Bench Top Rise	A	A	A
Recommended Fuse (Amps)	6	3	3
HIGH POTENTIAL TEST (VOLTS)			
1 Minute	2000		
2 Seconds	2500		
Open Circuit Voltage Test(volts)	110-135		
Short-Circuit Current Test (Amps)			
Secondary Current	2.4 - 3.0		
Input Current (Amps)	0.85 - 0.90	0.35 - 0.40	0.28 - 0.32

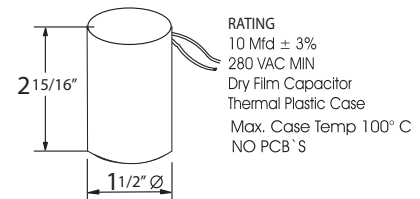
3" x 4" CORE



CORE AND COIL

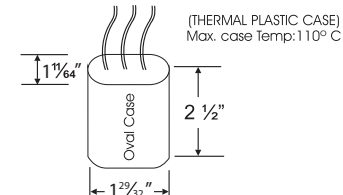
Dimension A (inches)	2.00
Dimension B (inches)	3.30
Weight (Lbs)	6.75
Lead Lengths (inches)	12

CAPACITOR



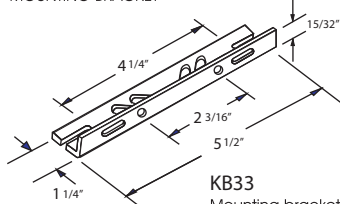
IGNITOR

Ballast to Lamp Distance (BTL): 2 feet



BRACKET

CORE & COIL
MOUNTING BRACKET



KB33

Mounting bracket for
Core & Coil Ballasts
(1 bracket with thru bolts)



C-01

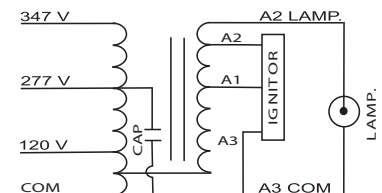
MOUNTING CLIP for round
case (Furnished as standard
with B suffix ballast)



I-01

MOUNTING CLIP for oval
case (Furnished as standard
with B suffix ballast)

WIRING DIAGRAM



120/277/347 VOLT CONNECTION



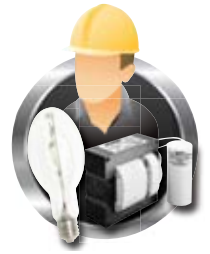
Data is based upon tests performed in a controlled environment and representative of relative performance. Actual performance can vary depending on operating conditions. Specifications are subject to change without notice.



www.standardpro.com

TECHNICAL INFORMATION BULLETIN

LAMP AND BALLAST KIT



Ordering Information

Order code: 61013

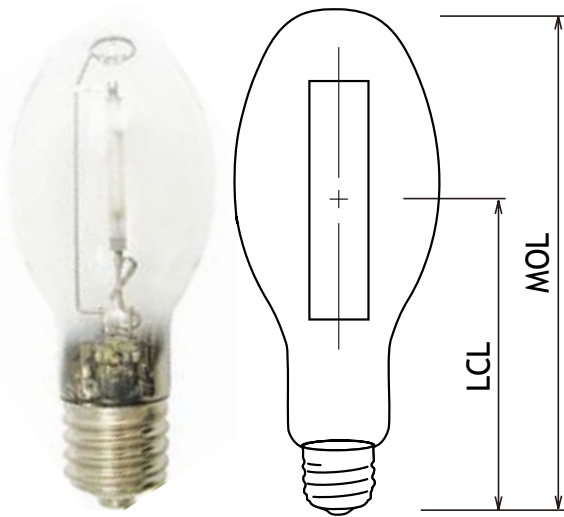
ANSI code: S54

Description: LBK/BHPS0100/TRITAP/C/HX/MOG

System: High Pressure Sodium

UPC: 69549610132

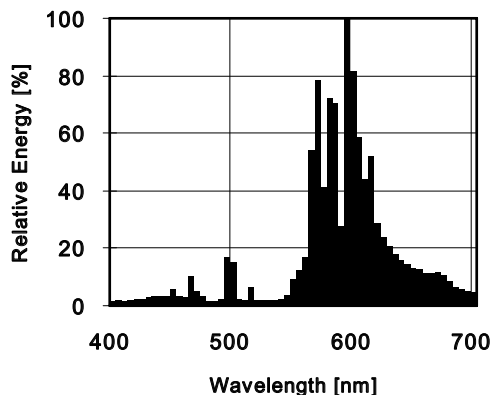
Lamp Information



Wattage (W):	100
Initial lumens (lm):	9 500
Mean lumens (lm):	8 550
Lumens per watt (lm/W):	95
Lamp voltage (V):	55
Colour temperature (K):	1 900
Chromaticity (x,y):	0.525, 0.415
CRI:	22
Average life (hrs):	24 000
Warm up time to 90% (min):	5
Hot restart time to 90% (min):	3
Burn Position:	Universal
Max base temperature:	210
Max lamp temperature:	400

ALL
TOUTES

Spectral Distribution



Physical data / Requirements

Shape:	ED23.5
Base:	Mog Base E39
Finish:	Clear
Luminaire rating:	Open
Diameter (mm/in.):	75.0 (2 15/16)
MOL (mm/in.):	186.0 (7 5/16)
LCL (mm/in.):	127.0 (5)
Effective arc length (mm):	36

Warning

“R” **WARNING:** this lamp can cause serious skin burn and eye inflammation from shortwave ultraviolet radiation if the outer envelope of the lamp is broken or punctured. Do not use where people will remain for more than a few minutes unless adequate shielding or other safety precautions are used. Lamps that will automatically extinguish when the outer envelope is broken or punctured are commercially available. Complies with USA Federal Standard 21 CFR 1040.30 and Canada Standard SOR/80-381.