



# ANCHORS COMPLETE COLLECTION

HOLLOW WALL | UNIVERSAL | MASONRY



Richelieu adds new, innovative products to its complete line of anchoring hardware. Now even more effective and easy to use. Richelieu's high-quality anchors are very functional and a great help in all your projects.



➤ **HOLLOW WALL** anchor:  
for use in drywall, tile or plaster

➤ **UNIVERSAL** anchor:  
for use in hollow walls or solid walls



➤ **MASONRY** anchor:  
for use in concrete, block or brick

Ideal for commercial and residential applications.



## HOLLOW WALL



■ Zinc-plated

### ✓ Advantages and benefits

A solid anchor. Requires pre-drilling, contrary to the expanding drive anchor with machine screw.

### 🔗 Application

Drywall

Product	Diameter	Grip range	Quantity
HWA18LMK	1/8" (long)	5/8" to 1"	Blister of 10 un.
HWA18SMK	1/8" (short)	3/8" to 1/2"	Blister of 10 un.
HWA18XSMK	1/8" (extra-short)	3/8" to 1/2"	Blister of 12 un.
HWA316LMK	3/16" (long)	5/8" to 1"	Blister of 6 un.
HWA316SMK	3/16" (short)	3/8" to 1/2"	Blister of 8 un.

## EXPANDING DRIVE ANCHOR WITH MACHINE SCREW



■ Zinc-plated

■ 1/8" diameter

### ✓ Advantages and benefits

Does not require pre-drilling; installs with a hammer.

### 🔗 Application

Drywall

Product	Quantity
HWDA18LDMK	Blister of 6 units
HWDA18SDMK	Blister of 8 units

HOLLOW WALL

## NYLON SHIELD

Walls only



- Self-drilling anchor
- ✓ **Advantages and benefits**  
Easy to use.
- ➔ **Application**  
Drywall

Product	Screw size	Length	Quantity
NA6VMK	#6	1 1/8"	Blister of 6 units
NA6VMX	#6	1 1/8"	Blister of 18 units
NA6SVA	#6	1 1/8"	Box of 50
NA8LC1	#8	1 5/8"	Box of 100
NA8VMK	#8	1 5/8"	Blister of 5 units
NA8VMX	#8	1 5/8"	Blister of 15 units
NA8LVA	#8	1 5/8"	Box of 40

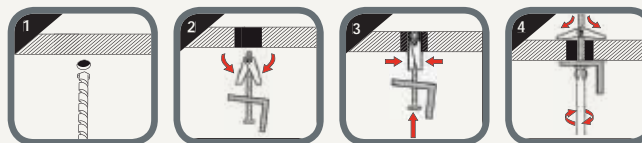


## SPRING TOGGLE BOLT



- Zinc-plated
- ✓ **Advantages and benefits**  
A highly effective and classic design, trusted and used for decades.
- ➔ **Application**  
Can be used with any hollow material.

Product	Diameter	Length	Quantity
STZ143VMK	1/4"	3"	Blister of 2 units
STZ143VVA	1/4"	3"	Box of 15
STZ144VMK	1/4"	4"	Blister of 2 units
STZ144VVA	1/4"	4"	Box of 15
STZ182VMK	1/8"	2"	Blister of 4 units
STZ182VVA	1/8"	2"	Box of 25
STZ183VMK	1/8"	3"	Blister of 4 units
STZ183VVA	1/8"	3"	Box of 25
STZ3163VMK	3/16"	3"	Blister of 4 units
STZ3163VVA	3/16"	3"	Box of 20
STZ3164VMK	3/16"	4"	Blister of 4 units
STZ3164VVA	3/16"	4"	Box of 20



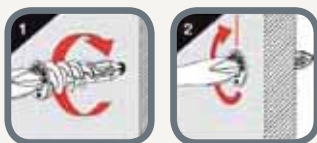
## METAL SHIELD

Walls only



- Self-drilling anchor
- Zinc-Plated
- 1 5/8" long
- #8 screw size
- ✓ **Advantages and benefits**  
Easy to use.
- ➔ **Application**  
Drywall

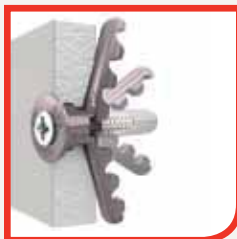
Product	Quantity
MA8LC1	Box of 100
MA8LJ	Box of 150
MA8LVMK	Blister of 5 units
MA8LVMX	Blister of 15 units
MA8LVA	Box of 40



HOLLOW WALL

## ALLIGATOR

Walls and ceilings



- All-purpose expandable anchor
- Polymer



### Advantages and benefits





- The strongest anchor in concrete and solid walls
- Rust-resistant screws



### Application

For drywall, tile, plaster, concrete, block, or brick.

### Safe load

 		 	
Drywall 1/2"	70 lb 31 kg	Concrete	281 lb 127 kg
	×		256 lb 116 kg

Product	Included	Screw Size	Quantity
TGA14J	-	#6-8-10-12 screw	Box of 75
TGA14VDJ*	#8 screw (1 1/2")	#6-8-10-12 screw	Box of 75
TGA14VDMX*	#8 screw (1 1/2")	#6-8-10-12 screw	Blister of 10 un.
TGA516J	-	#8-10-12-14 screw + 1/4 Lag	Box of 50
TGA516VDJ*	#12 Screw (2")	#8-10-12-14 screw + 1/4 Lag	Box of 50
TGA516VDMX*	#12 Screw (2")	#8-10-12-14 screw + 1/4 Lag	Blister of 10 un.

\*Masonry drill bit included

## MP

Walls and ceilings



- Multi-purpose toggle anchor.
- Plastic
- #8 screw size (included)



### Advantages and benefits



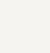
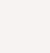
- The most versatile anchor: strong in drywall, and strong in concrete
- Rust-resistant screws



### Application

For drywall, tile, plaster, concrete, block, or brick.

### Safe load

 		 	
Drywall 1/2"	75 lb 34 kg	Concrete	20 lb 9 kg
			130 lb 58 kg

Product	Quantity
TGPT12VDMX	Blister of 10 units
TGPT12VVA	Box of 30

## PLASTIC SHIELD



### Advantages and benefits

- Easy to install
- Can be installed with most screw types
- Notched wings to prevent rotation of the anchor as the screw is inserted



### Application

For concrete, block, or brick.

- The most universally used anchor
- 2 expansion points to prevent rotation

Product	Included	Screw Size	Diameter	Color	Quantity
PA14J	-	#8-9-10 screw	1/4"	Blue	Box of 400
PA14MK	-	#8-9-10 screw	1/4"	Blue	Blister of 16 units
PA14VA	-	#8-9-10 screw	1/4"	Blue	Box of 100
PA14VMK	#8 screw (1 1/4")	#8-9-10 screw	1/4"	Blue	Blister of 8 units
PA316J	-	#5-6-7-8 screw	3/16"	Yellow	Box of 800
PA316M1	-	#5-6-7-8 screw	3/16"	Yellow	Box of 1000
PA316MK	-	#5-6-7-8 screw	3/16"	Yellow	Blister of 20 units
PA316VA	-	#5-6-7-8 screw	3/16"	Yellow	Box of 150
PA316VMK	#8 screw (1")	#5-6-7-8 screw	3/16"	Yellow	Blister of 10 units
PA516MK	-	#12-14 screw	5/16"	Green	Blister of 12 units
PA516VA	-	#12-14 screw	5/16"	Green	Box of 100
PA516VMK	Screw #10 (1 1/2")	#12-14 screw	5/16"	Green	Blister of 6 units

## CANADA

Tel.: 1 800 361-6000 | Fax: 1 800 363-0193

### ALBERTA

Calgary  
Edmonton

### BRITISH COLUMBIA

Kelowna  
Vancouver  
Victoria

### MANITOBA

Winnipeg

### NEW BRUNSWICK

Moncton

### NEWFOUNDLAND

St. John's

### NOVA SCOTIA

Halifax

### ONTARIO

Barrie  
Kitchener  
Mississauga  
Ottawa  
Sudbury  
Thunder Bay  
Toronto

### QUÉBEC

Drummondville  
Laval  
Longueuil  
Montréal  
Québec

### SASKATCHEWAN

Regina  
Saskatoon

## UNITED STATES

Tel.: 1 800 619-5446 | Fax: 1 800 876-7454

### CONNECTICUT

Hartford

### FLORIDA

Dania Beach  
Hialeah  
Pompano Beach  
Riviera Beach

### GEORGIA

Atlanta

### ILLINOIS

Chicago

### INDIANA

Indianapolis

### KENTUCKY

Louisville

### MASSACHUSETTS

Boston

### MICHIGAN

Detroit

### NEW JERSEY

Avenel  
Lincoln Park

### NEW YORK

New York  
Syracuse

### NORTH CAROLINA

Charlotte  
Greensboro  
High Point  
Raleigh

### OHIO

Cincinnati  
Cleveland  
Columbus

### OREGON

Portland

### SOUTH CAROLINA

Greenville

### TENNESSEE

Nashville

### WASHINGTON

Seattle

