

The AWL-LED-14W is a wall pack with an adjustable head that can be aimed straight down for dark sky requirements or aimed out to deliver the light where required.



APPLICATIONS

Ideal for use on outdoor walls along perimeters of buildings, townhouses, condominiums, schools.

Project	
Type	
Date	
Notes	

SPECIFICATIONS

Construction

Die cast aluminum housing with tamperproof stainless steel hardware. Clear tempered glass lens with a gasket. There are 4 conduit entries. The unit has a unique hanging hook assembly for easy installation and a leveling bubble on the back box for proper alignment.

LED configuration

The AWL-LED-14W has one LED Chip On Board (COB) that delivers 1651 lumens. The LEDs have a colour temperature of 5000K as standard. 3000K and 4000K also available. The LEDs have a CRI of greater than 70 and an operating temperature range of -40°C to +40°C.

Adjustable head

The fixture can be aimed 0° - 90° delivering more lumens on the ground where needed.

Electrical

Total system wattage of the unit is 14W. The standard unit has a high efficiency driver that operates at 120 - 277V. 347V drivers are also available.

Finish

Standard finish is Bronze, White and Black. Please consult factory for custom colour.

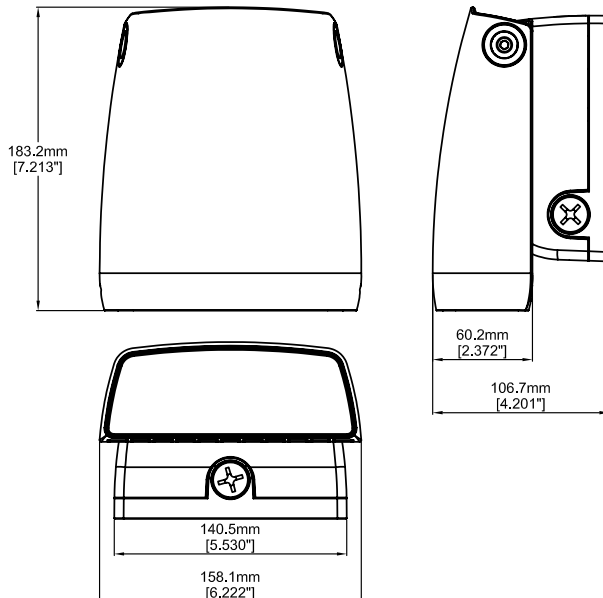
Accessories

Photocell, On/Off Sensor and 0 - 10V Dimmable Smart Sensor.

Equivalent to	up to 150W MH
Input Watts	14W
Lumens	1651 lumens
Efficiency	118 lumens per watt

Operating Temperature	-40°C to +40°C
Certification	cULus, DLC, IP65 meets LM79, LM80
LED life	100,000 hours
Colour Temperature	5000K (standard) 4000K, 3000K (Option)
Warranty	5 Years

DIMENSIONS



Shown with Optional Motion Sensor

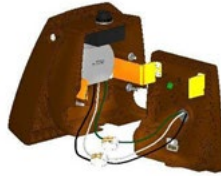


INSTALLATION INFORMATION

1. Open fixture, mount back box to junction box



2. Rest fixture onto hook and connect wires



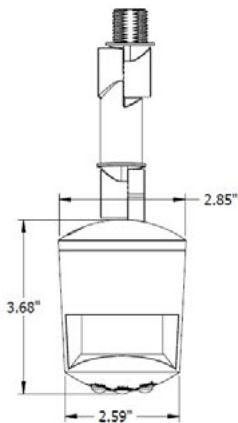
3. Reattach fixture to back box



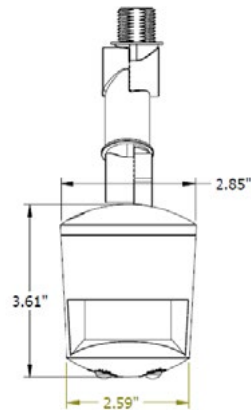
ACCESSORIES

MS180DIM 0 - 10V Dimmable Smart Sensor (DMS)

MS180S On/Off Sensor (SMS)

**Dimmable Smart Sensor**

The MS180DIM is a fully adjustable, dimmable smart sensor that allows you to provide reduced light levels as low as 10% when no motion is detected.

**On/Off Sensor**

The MS180S is a fully adjustable motion sensor that can be set for dusk to dawn operation or other custom applications.

Features: Dimmable Smart Sensor

- Adjustable light levels ensure fixture is fully on when needed and dimmed or off when not.
- Smart dimming reduces electrical load and heat generated by the fixture resulting in increased fixture life.
- Over 92% energy savings compared to traditional wall packs.
- Sensor has an extension arm with two rotatable joints that allow mounting from the bottom conduit access or the side conduit access of fixture.
- Daylight sensor without smart dimming (MS180S) also available in the same design.

Contact us to learn more.

PHOTOMETRIC DATA

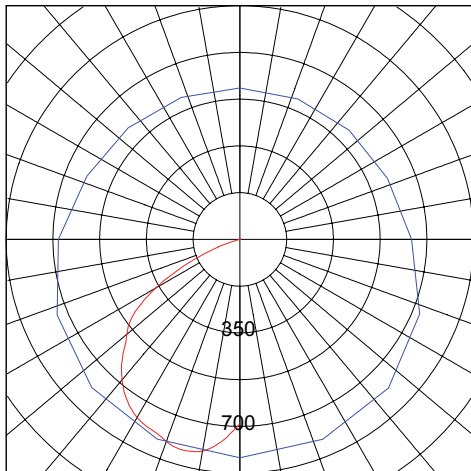
CATALOG NUMBER: AWL-LED14-A-5K-BRZ

FILENAME: AWL-LED14-A-5K-BRZ-PC.IES
 IESNA:LM-63-1995
 [TESTDATE] 2014-12-15
 [ISSUEDATE] 2014-12-15
 [MANUFAC] RAB DESIGN LIGHTING
 [LUMCAT] AWL-LED14-A-5K-BRZ
 [LUMINAIRE] AWL SERIES

SUMMARY DATA

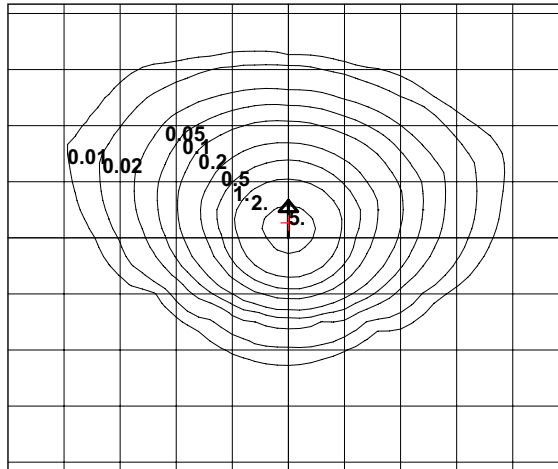
EFFICIENCY (Total): - 170638.4 %
 EFFICIENCY (Down / Up): - 170562.6 % / - 75.8 %
 EFFICIENCY (Street / House): 0.0 % / 0.0 %
 LUMENS/LAMP: -1
 NO. OF LAMPS: 1
 LUMINOUS OPENING: RECTANGULAR
 Width: 0.03 (Meters)
 Length: 0.01
 Height: 0.06
 INPUT WATTS: 13.77

PLANE & CONE DIAGRAM



Max plane at H = 0 Max cone at V = 15
 MAX CANDLEPOWER: 817.0705

ISO-ILLUMINANCE DIAGRAM

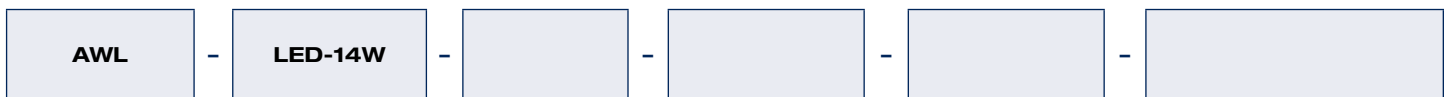


Mounting Height = 10 Feet. Each box represents one mounting height.

Mounting Height	Multiplier
10	1.000
15	0.444
20	0.250
25	0.160
30	0.111
35	0.082
40	0.063
45	0.049
50	0.040

+ = Point of max candela

ORDERING GUIDE



VOLTAGE	COLOUR TEMP	FINISH	OPTIONS
A - 120V*	5K - 5000K*	BRZ- BRONZE*	DMS - Dimmable Sensor
F - 277V	4K - 4000K	WHT - WHITE*	SMS - On/Off Sensor
C - 347V	3K - 3000K	BLK - BLACK*	PCA - 120V Photocell**
		CC - CUSTOM COLOUR	PCF - 277V Photocell**
			PCC - 347V Photocell**

* Standard configuration

** Chosen photocell option must be the same as voltage