

Technical Information Bulletin Fluorescent

E-Lume™

ORDERING INFORMATION

Order code: 56517
 Description: FC12T9/CW/RS/4P/ELUME
 UPC: 69549565173
 Case quantity: 24

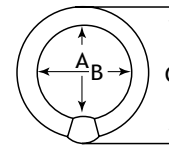


Nominal diameter : 12 in. (305 mm) Dia. : 1 1/2 in. (29.5 mm)

PERFORMANCE DATA

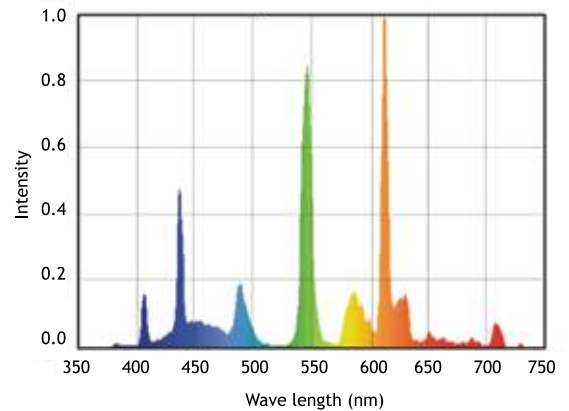
Shape: T9
 Base: 4 pin
 Starting method: Rapid Start (RS)
 Wattage (W): 32
 Colour temperature (K): 4 100
 CRI: 85
 Rated life on IS¹ ballast:
 Based on a 3 hour start 6 000
 Initial lumens (lm): 1 570
 Mean lumens (lm): 1 495
 Nominal efficiency (lm/W): 49
 TCLP compliant: Yes
 Phosphor composition: Triphosphor
 Nominal lamp operating frequency (Hz): 60
² Minimum starting temperature (°C): -10

DIMENSIONS



A Max	B Min / Max	C Max
Inner diameter from base to tube	Inner diameter from tube to tube	Outer overall diameter from base to tube
9.64 in. 245.0 mm	9.42 in./ 9.54 in. 237.5 mm/ 242.5 mm	11.83 in./ 300.5 mm

SPECTRAL DISTRIBUTION



¹ The life rating indicated is based on 3 hour burning cycles under specified conditions and with ballast meeting ANSI specifications.

² The minimum starting temperature is a function of the ballast. The minimum starting temperature is based on a STANDARD brand T9 Circline ballast.

