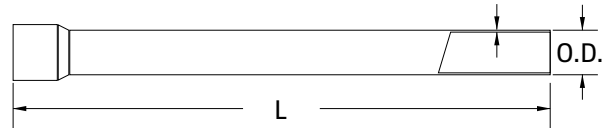


RIGID PVC SCHEDULE 40 CONDUIT

LIGHTWEIGHT MATERIALS

Rigid PVC Conduit is easier to move and handle because it is one-fifth the weight of steel and half the weight of aluminum. See chart below.

RIGID PVC SCHEDULE 40 CONDUIT



APPROXIMATE WEIGHT COMPARISON

SIZE (IN)	PVC (LB/100FT)	ALUMINUM (LB/100FT)	STEEL (LB/100FT)
1/2"	16.1	27	79
3/4"	21.5	37	105
1"	31.9	53	153
1 1/4"	43.8	70	201
1 1/2"	52.3	86	249
2"	70.3	116	334
2 1/2"	112.0	183	527
3"	146.7	239	690
3 1/2"	176.4	288	831
4"	208.9	340	982
5"	283.4	465	1,344
6"	368.0	613	1,771

DIMENSIONS

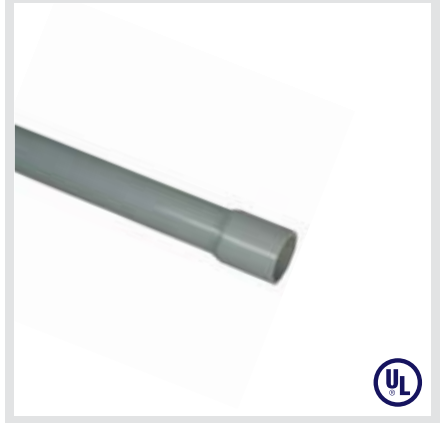
NOMINAL SIZE (IN)	AVG. OUTSIDE DIAMETER (IN)	AVG. INSIDE DIAMETER (IN)	MIN. WALL THICKNESS (IN)	MIN. BELL DEPTH (IN)
1/2"	0.840	0.608	0.109	2.000
3/4"	1.050	0.810	0.113	2.250
1"	1.315	1.033	0.133	2.500
1 1/4"	1.660	1.362	0.140	2.750
1 1/2"	1.900	1.592	0.145	3.000
2"	2.375	2.049	0.154	4.000
2 1/2"	2.875	2.445	0.203	4.000
3"	3.500	3.042	0.216	4.000
3 1/2"	4.000	3.520	0.226	4.000
4"	4.500	3.998	0.237	4.000
5"	5.565	5.017	0.258	5.500
6"	6.625	6.031	0.280	6.500



RIGID PVC SCHEDULE 40 CONDUIT

NOMINAL PIPE SIZE (IN)	RBP PART NUMBER	DESCRIPTION	UPC	APPROX. WEIGHT (LB/100FT)
1/2"	RC4000510	RIGID COND .5IN X 10FT GY	772555155008	16.1
3/4"	RC4000710	RIGID COND .75IN X 10FT GY	772555155206	21.5
1"	RC4001010	RIGID COND 1IN X 10FT GY	772555155404	31.9
1-1/4"	RC4001210	RIGID COND 1.25IN X 10FT GY	772555155602	43.8
1-1/2"	RC4001510	RIGID COND 1.5IN X 10FT GY	772555155800	52.3
2"	RC4002010	RIGID COND 2IN X 10FT GY	772555156005	70.3
2-1/2"	RC4002510	RIGID COND 2.5IN X 10FT GY	772555156203	112.0
3"	RC4003010	RIGID COND 3IN X 10FT GY	772555156401	146.7
3-1/2"	RC4003510	RIGID COND 3.5IN X 10FT GY	772555156609	176.4
4"	RC4004010	RIGID COND 4IN X 10FT GY	772555156708	208.9
5"	RC4005010	RIGID COND 5IN X 10FT GY	772555156906	283.4
6"	RC4006010	RIGID COND 6IN X 10FT GY	772555157101	368.0

SCH 40 RIGID CONDUIT
10 FOOT GRAY



NOMINAL PIPE SIZE (IN)	RBP PART NUMBER	DESCRIPTION	UPC	APPROX. WEIGHT (LB/100FT)
1/2"	RC4000520	RIGID COND .5IN X 20FT GY	772555155107	16.1
3/4"	RC4000720	RIGID COND .75IN X 20FT GY	772555155305	21.5
1"	RC4001020	RIGID COND 1IN X 20FT GY	772555155503	31.9
1-1/4"	RC4001220	RIGID COND 1.25IN X 20FT GY	772555155701	43.8
1-1/2"	RC4001520	RIGID COND 1.5IN X 20FT GY	772555155909	52.3
2"	RC4002020	RIGID COND 2IN X 20FT GY	772555156104	70.3
2-1/2"	RC4002520	RIGID COND 2.5IN X 20FT GY	772555156302	112.0
3"	RC4003020	RIGID COND 3IN X 20FT GY	772555156500	146.7
3-1/2"	RC4003520	RIGID COND 3.5IN X 20FT GY	772555156654	176.4
4"	RC4004020	RIGID COND 4IN X 20FT GY	772555156807	208.9
5"	RC4005020	RIGID COND 5IN X 20FT GY	772555157002	283.4
6"	RC4006020	RIGID COND 6IN X 20FT GY	772555157156	368.0

SCH 40 RIGID CONDUIT
20 FOOT GRAY

