

# Electrical Metallic Tubing (EMT) and True Color™ EMT

## E-Z Pull™ EMT

- Hot galvanized steel using patented inline Flo-Coat® process for long lasting exterior protection
- E-Z Pull interior coating provides a smooth raceway for fast, easier wire-pulling
- Excellent mechanical protection for conductors
- Ductility for faster and easier bending
- Optimal EMI shielding characteristics
- Listed to Underwriters Laboratories Safety Standard UL 797
- Manufactured in accordance with ANSI C80.3
- Available in sizes 1/2 (16) - 4 (103)

## True Color™ EMT

- All the benefits of E-Z Pull EMT
- Instant identification of multiple circuits
- Fire Alarm® Red EMT
- Healthcare Green EMT
- Data Com Blue EMT
- Available in 8 colors
- Available in sizes 1/2 (16) - 4 (103)

## True Color™ Applications

### Black EMT

- Blends in dark colored areas

### Fire Alarm® EMT

- Emergency circuits
- Fire alarm and Security systems

### Orange EMT

- Construction/research areas
- Fiber optic systems
- Auto repair/maintenance

### Yellow EMT

- High voltage wiring
- Caution areas
- Special equipment

### Green EMT

- Hospital and healthcare areas
- Nurse call stations
- Critical circuits

### Blue EMT

- Low voltage wiring
- Data com/video
- Network security

### Purple EMT

- Specialty wiring systems
- Security systems

### White EMT

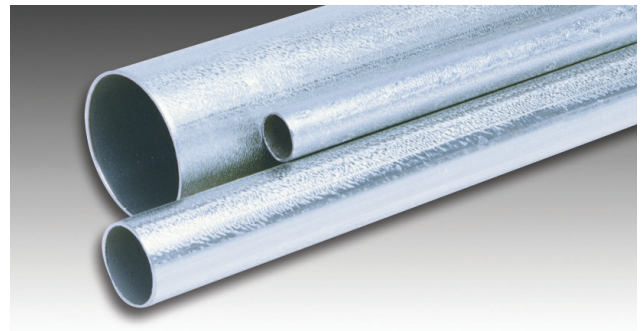
- Blends in light colored areas

### Silver EMT

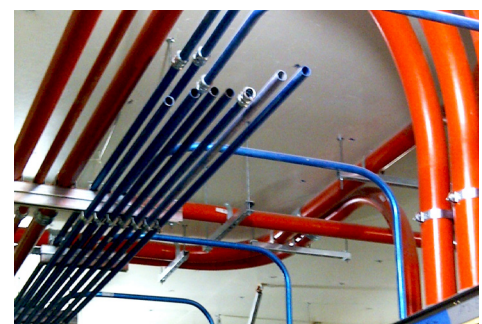
- Standard Use
- Contemporary architecture



## Quality Electrical Metallic Tubing



## Identify Important Circuits Instantly!



## Project Information

Company Name: \_\_\_\_\_  
 Address: \_\_\_\_\_  
 City: \_\_\_\_\_  
 State & Zip: \_\_\_\_\_  
 Phone: \_\_\_\_\_  
 Project Name: \_\_\_\_\_  
 City: \_\_\_\_\_  
 State: \_\_\_\_\_

NOTE: Special orders are non-cancelable, non-returnable and non-refundable

# Electrical Metallic Tubing (EMT) and True Color™ EMT

## FEATURES & SPECIFICATIONS

### Manufactured for Long Life

Columbia-MBF® EMT is precision manufactured from high grade mild strip steel for exceptional durability and long-lasting life. Columbia-MBF EMT is hot galvanized using a patented inline Flo-Coat™ process. This process combines zinc, a conversion coating, and a clear organic polymer topcoat to form a triple layer of protection against corrosion and abrasion.

E-Z Pull™ EMT combines strength with ductility, providing easy bending, cutting and joining while resisting flattening, kinking and splitting. Available in sizes 1/2 (16) - 4 (103).

### Coatings

Columbia-MBF's EMT (Electrical Metallic Tubing) has a special low friction ID coating called E-Z Pull that greatly improves the slip properties between conduit and wire. With E-Z Pull EMT, wire pulls through the EMT smoothly and easily, making installation easier and faster.

### EMI Shielding

Columbia-MBF EMT is very effective in reducing electromagnetic field levels for encased power distribution circuits, shielding computers and other sensitive electronic equipment from the effects of electromagnetic interference.

For more information on EMT shielding, visit [www.columbia-mbf.ca](http://www.columbia-mbf.ca) to obtain the **GEMI** (Grounding and Electro-Magnetic Interference) software analysis program.

### Codes & Standards Compliance

Columbia-MBF EMT is Certified to Canadian Standards Association C22.2 No.83.1. As a metal raceway, EMT functions as an equipment bonding conductor when installed in compliance with the Canadian Electrical Code (CEC), including Section 10 *Grounding and Bonding* and Section 12-1400 *Electrical Metallic Tubing*. Documentation is available in the GEMI (Grounding and Electro-Magnetic Interference) analysis software and related research studies found at the [www.columbia-mbf.ca](http://www.columbia-mbf.ca) website.

Installation of EMT shall be in accordance with the Canadian Electrical Code and the CSA Certification information.

### Specification Data

To specify Columbia-MBF EMT, include the following: Electrical Metallic Tubing shall be equal to that manufactured by Columbia-MBF Inc. EMT shall be hot galvanized steel O.D. with an organic corrosion resistant I.D. coating, and shall be CSA Certified to Standard C22.2 No. 83.1 and manufactured in accordance with ANSI C80.3.

## Electrical Metallic Tubing (EMT) and True Color™ EMT

Certified to Canadian Standards Association Safety Standard CSA C22.2 No.83.1  
Manufactured in accordance with ANSI C80.3



Trade Size	Metric Designator	Outside Diameter <sup>1</sup>		Nominal Wall Thickness <sup>2</sup>		Approximate Weight Per 100 Ft. (30.5M)		Standard Bundle Quantity		True Color** Bundle Qty.	
		in	mm	in	mm	lb	kg	ft	m	ft	m
1/2	16	0.706	17.93	0.042	1.07	30	13.6	2500	762.0	3500	1066.8
3/4	21	0.922	23.42	0.049	1.24	46	20.9	2000	609.6	2500	762.0
1	27	1.163	29.54	0.057	1.45	67	30.4	1000	304.8	1500*	457.2
1-1/4	35	1.510	38.35	0.065	1.65	101	45.8	500	152.4	2000	609.6
1-1/2	41	1.740	44.20	0.065	1.65	116	52.6	500	152.4	1500	457.2
2	53	2.197	55.80	0.065	1.65	148	67.1	510	155.4	1200	365.7
2-1/2	63	2.875	73.03	0.072	1.83	216	98.0	250	76.2	610	185.9
3	78	3.500	88.90	0.072	1.83	263	119.3	200	61.0	510	155.4
3-1/2	91	4.000	101.60	0.083	2.11	349	158.3	100	30.5	370	112.7
4	103	4.500	114.30	0.083	2.11	393	178.3	100	30.5	300	91.5

<sup>1</sup>Outside diameter tolerances: +/- .005 in. (.13mm) for size 1/2 (16mm) through 2 (53mm);

+/- .010 in. (.25mm) for size 2-1/2 (63);

+/- .015 in. (.38mm) for size 3 (78);

+/- .020 in. (.50mm) for size 3-1/2 (91) and 4 (103).

NOTE: Length = 10 ft. (3.05m) with a tolerance of +/- .25 in. (6mm)

<sup>2</sup>For information only. Not a requirement of the CSA standard.

\*True Color Blue size 1 (27) bundle quantity: 3000 ft / (914.4m)

\*\* True Color Size 2 (53)- 4 (103) are available through special order

NOTE: Special orders are non-cancelable, non-returnable and non-refundable