

**Rittal – The System.**

Faster – better – everywhere.

# COMPACT ENCLOSURES AX

Technical details



ENCLOSURES

POWER DISTRIBUTION

CLIMATE CONTROL

IT INFRASTRUCTURE

SOFTWARE & SERVICES



FRIEDHELM LOH GROUP

# Compact enclosures

## Contents

### Compact enclosures AX, sheet steel

#### Basic enclosure AX

| Model No. AX | Width mm | Height mm | Depth mm | Cam lock | 3-point locking system | Page  |
|--------------|----------|-----------|----------|----------|------------------------|-------|
| 1031.000     | 380      | 300       | 210      | 1        | -                      | 4-5   |
| 1033.000     | 300      | 300       | 210      | 1        | -                      | 4-5   |
| 1034.000     | 300      | 400       | 210      | 1        | -                      | 4-5   |
| 1037.000     | 400      | 800       | 300      | 2        | -                      | 4-5   |
| 1038.000     | 380      | 600       | 210      | 2        | -                      | 4-5   |
| 1039.000     | 600      | 380       | 210      | 1        | -                      | 4-5   |
| 1045.000     | 400      | 500       | 210      | 2        | -                      | 4-5   |
| 1050.000     | 500      | 500       | 210      | 2        | -                      | 4-5   |
| 1054.000     | 600      | 600       | 250      | 2        | -                      | 4-5   |
| 1055.000     | 800      | 600       | 300      | 2        | -                      | 6-7   |
| 1057.000     | 500      | 700       | 250      | 2        | -                      | 4-5   |
| 1058.000     | 600      | 800       | 250      | 2        | -                      | 4-5   |
| 1059.000     | 600      | 800       | 400      | 2        | -                      | 4-5   |
| 1060.000     | 600      | 600       | 210      | 2        | -                      | 4-5   |
| 1073.000     | 760      | 760       | 300      | 2        | -                      | 6-7   |
| 1076.000     | 600      | 760       | 210      | 2        | -                      | 4-5   |
| 1077.000     | 760      | 760       | 210      | 2        | -                      | 6-7   |
| 1090.000     | 600      | 1000      | 250      | 2        | -                      | 4-5   |
| 1091.000     | 600      | 1000      | 400      | 2        | -                      | 4-5   |
| 1100.000     | 1000     | 760       | 210      | 2        | -                      | 12-13 |
| 1110.000     | 1000     | 1000      | 300      | 2        | -                      | 12-13 |
| 1114.000     | 1000     | 1,400     | 300      | -        | ■                      | 14-15 |
| 1115.000     | 1000     | 1,400     | 400      | -        | ■                      | 14-15 |
| 1116.000     | 1200     | 1200      | 400      | -        | ■                      | 14-15 |
| 1130.000     | 1000     | 760       | 300      | 2        | -                      | 12-13 |
| 1180.000     | 800      | 1000      | 300      | 2        | -                      | 6-7   |
| 1181.000     | 800      | 1000      | 400      | 2        | -                      | 6-7   |
| 1213.000     | 1000     | 1200      | 300      | -        | ■                      | 14-15 |
| 1214.000     | 1000     | 1200      | 400      | -        | ■                      | 14-15 |
| 1260.000     | 600      | 1200      | 300      | -        | ■                      | 8-9   |
| 1261.000     | 600      | 1200      | 400      | -        | ■                      | 8-9   |
| 1280.000     | 800      | 1200      | 300      | -        | ■                      | 10-11 |
| 1281.000     | 800      | 1200      | 400      | -        | ■                      | 10-11 |
| 1338.000     | 380      | 600       | 350      | 2        | -                      | 4-5   |
| 1339.000     | 600      | 380       | 350      | 1        | -                      | 4-5   |
| 1350.000     | 500      | 500       | 300      | 2        | -                      | 4-5   |
| 1360.000     | 600      | 600       | 350      | 2        | -                      | 4-5   |
| 1376.000     | 600      | 760       | 350      | 2        | -                      | 4-5   |
| 1380.000     | 380      | 380       | 210      | 1        | -                      | 4-5   |

#### Wall-mounted enclosure AX IT with 482.6 mm (19") mounting angles

| Model No. AX | Width mm | Height mm | Depth mm | Page |
|--------------|----------|-----------|----------|------|
| 7641.350     | 600      | 380       | 350      | 20   |
| 7643.350     | 600      | 600       | 350      | 20   |
| 7645.350     | 600      | 760       | 350      | 20   |
| 7646.400     | 600      | 800       | 400      | 20   |

#### Command panel AX with handle strips

| Model No. AX | Width mm | Height mm | Depth mm | Page |
|--------------|----------|-----------|----------|------|
| 6315.150     | 300      | 300       | 210      | 21   |
| 6315.250     | 380      | 300       | 210      | 21   |
| 6315.350     | 380      | 380       | 210      | 21   |
| 6315.450     | 500      | 500       | 210      | 21   |
| 6315.650     | 600      | 600       | 210      | 21   |
| 6320.050     | 300      | 200       | 155      | 22   |
| 6320.350     | 380      | 380       | 210      | 22   |
| 6320.450     | 500      | 500       | 210      | 22   |
| 6320.550     | 600      | 380       | 210      | 22   |
| 6320.650     | 600      | 600       | 210      | 22   |

#### Command panel AX for desktop TFT up to 24"

| Model No. AX | Width mm | Height mm | Depth mm | Page |
|--------------|----------|-----------|----------|------|
| 6321.050     | 650      | 450       | 155      | 23   |

### Compact enclosures AX, stainless steel

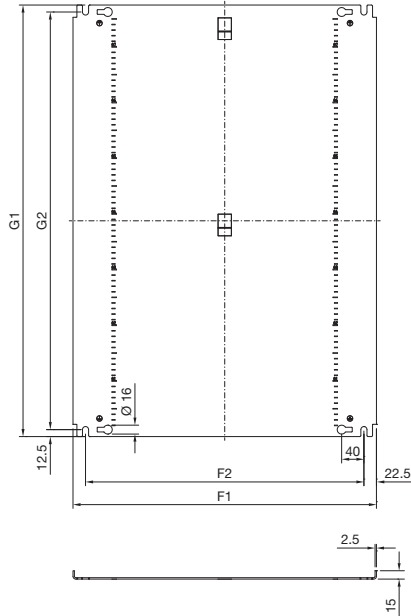
#### Basic enclosure AX

| Model No. AX | Width mm | Height mm | Depth mm | Cam lock | 3-point locking system | Page  |
|--------------|----------|-----------|----------|----------|------------------------|-------|
| 1003.000     | 300      | 300       | 210      | 1        | -                      | 16-17 |
| 1005.000     | 300      | 380       | 210      | 1        | -                      | 16-17 |
| 1006.000     | 380      | 380       | 210      | 1        | -                      | 16-17 |
| 1007.000     | 500      | 500       | 210      | 2        | -                      | 16-17 |
| 1008.000     | 380      | 600       | 210      | 2        | -                      | 16-17 |
| 1009.000     | 600      | 380       | 210      | 1        | -                      | 16-17 |
| 1010.000     | 600      | 600       | 210      | 2        | -                      | 16-17 |
| 1011.000     | 380      | 300       | 210      | 1        | -                      | 16-17 |
| 1012.000     | 600      | 760       | 210      | 2        | -                      | 16-17 |
| 1013.000     | 500      | 500       | 300      | 2        | -                      | 16-17 |

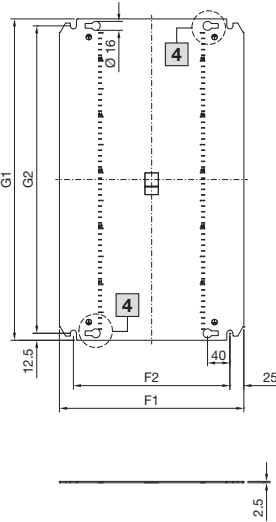
| Model No. AX | Width mm | Height mm | Depth mm | Cam lock | 3-point locking system | Page  |
|--------------|----------|-----------|----------|----------|------------------------|-------|
| 1014.000     | 760      | 760       | 300      | 2        | -                      | 16-17 |
| 1015.000     | 400      | 500       | 210      | 2        | -                      | 16-17 |
| 1016.000     | 800      | 1000      | 300      | 2        | -                      | 16-17 |
| 1017.000     | 800      | 1200      | 300      | -        | ■                      | 18    |
| 1018.000     | 1000     | 1000      | 300      | 2        | -                      | 19    |
| 1019.000     | 1000     | 1200      | 300      | -        | ■                      | 19    |
| 1302.000     | 300      | 380       | 210      | 1        | -                      | 16-17 |
| 1303.000     | 380      | 380       | 210      | 1        | -                      | 16-17 |
| 1304.000     | 600      | 600       | 210      | 2        | -                      | 16-17 |
| 1305.000     | 1000     | 1200      | 300      | -        | ■                      | 19    |

### Basic enclosure AX with cam lock and one gland plate

Mounting plate type 1,  
with edge fold



Mounting plate type 2,  
without edge fold



#### Enclosure

- B1 = Enclosure width (overall width)
- B2 = Door width
- B3 = Clearance width, enclosure opening
- B4 = Clearance width between door profile strips
- B5 = Mounting distance, door profile strips
- B6 = Mounting distance, enclosures
- B7 = Gland plate opening
- H1 = Enclosure height (overall height)
- H2 = Door height
- H3 = Clearance height, enclosure opening
- H4 = Overall height, 25 mm pitch pattern of holes
- H6 = Mounting distance, enclosures
- N = No. of 25 mm pitch patterns of holes
- T1 = Overall depth
- T2 = Enclosure depth
- T3 = Installation depth (distance from inside of door to mounting plate)
- T7 = Gland plate opening

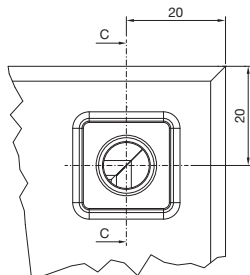
#### Mounting plate

- F1 = Mounting plate width
- F2 = Centre-to-centre spacing of the attachment holes
- G1 = Mounting plate height
- G2 = Centre-to-centre spacing of the attachment holes

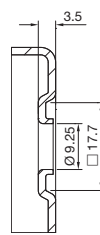
#### Gland plate

- M = Gland plate width
- O = Gland plate depth
- Type = Size of gland plate

Detail Y



Section C - C



| ModelNo.<br>AX | Width dimensions<br>mm |     |       |       |     |     |     | Height dimensions<br>mm |     |       |     |     |    |       | Depth dimensions<br>mm |       |     |     | Mounting plate<br>mm |     |     |      |     | Gland plate mm |      |  |
|----------------|------------------------|-----|-------|-------|-----|-----|-----|-------------------------|-----|-------|-----|-----|----|-------|------------------------|-------|-----|-----|----------------------|-----|-----|------|-----|----------------|------|--|
|                | B1                     | B2  | B3    | B4    | B5  | B6  | B7  | H1                      | H2  | H3    | H4  | H6  | N  | T1    | T2                     | T3    | T7  | F1  | F2                   | G1  | G2  | Type | M   | O              | Type |  |
| 1031.000       | 380                    | 374 | 332.7 | 289.5 | 305 | 340 | 303 | 300                     | 294 | 256.5 | 150 | 260 | 6  | 209.7 | 187.0                  | 189.0 | 113 | 330 | 280                  | 275 | 250 | 2    | 339 | 149            | 2    |  |
| 1033.000       | 300                    | 294 | 252.7 | 209.5 | 225 | 260 | 220 | 300                     | 294 | 256.5 | 150 | 260 | 6  | 209.7 | 187.0                  | 189.0 | 113 | 250 | 200                  | 275 | 250 | 2    | 256 | 149            | 1    |  |
| 1034.000       | 300                    | 294 | 252.7 | 209.5 | 225 | 260 | 220 | 400                     | 394 | 356.5 | 250 | 360 | 10 | 209.7 | 187.0                  | 189.0 | 113 | 250 | 200                  | 375 | 350 | 2    | 256 | 149            | 1    |  |
| 1037.000       | 400                    | 395 | 352.2 | 309.5 | 325 | 360 | 265 | 800                     | 795 | 756   | 650 | 760 | 26 | 300.7 | 277.5                  | 278.7 | 185 | 345 | 300                  | 775 | 750 | 1    | 301 | 221            | 5    |  |
| 1038.000       | 380                    | 374 | 332.7 | 289.5 | 305 | 340 | 303 | 600                     | 594 | 556.5 | 450 | 560 | 18 | 209.7 | 187.0                  | 188.5 | 113 | 330 | 280                  | 575 | 550 | 2    | 339 | 149            | 2    |  |
| 1039.000       | 600                    | 594 | 552.7 | 509.5 | 525 | 560 | 498 | 380                     | 374 | 336.5 | 250 | 340 | 10 | 209.7 | 187.0                  | 188.5 | 113 | 550 | 500                  | 355 | 330 | 2    | 534 | 149            | 4    |  |
| 1045.000       | 400                    | 394 | 352.7 | 309.5 | 325 | 360 | 303 | 500                     | 494 | 456.5 | 350 | 460 | 14 | 209.7 | 187.0                  | 189.0 | 113 | 350 | 300                  | 475 | 450 | 2    | 339 | 149            | 2    |  |
| 1050.000       | 500                    | 494 | 452.7 | 409.5 | 425 | 460 | 411 | 500                     | 494 | 456.5 | 350 | 460 | 14 | 209.7 | 187.0                  | 188.5 | 113 | 450 | 400                  | 475 | 450 | 2    | 447 | 149            | 3    |  |
| 1054.000       | 600                    | 594 | 552.2 | 509.5 | 525 | 560 | 498 | 600                     | 594 | 556   | 450 | 560 | 18 | 250.2 | 227.5                  | 228.7 | 113 | 550 | 500                  | 575 | 550 | 2    | 534 | 149            | 4    |  |
| 1057.000       | 500                    | 495 | 452.2 | 409.5 | 425 | 460 | 411 | 700                     | 695 | 656   | 550 | 660 | 22 | 250.7 | 227.5                  | 228.7 | 113 | 450 | 400                  | 675 | 650 | 2    | 447 | 149            | 3    |  |
| 1058.000       | 600                    | 595 | 552.2 | 509.5 | 525 | 560 | 498 | 800                     | 795 | 756   | 650 | 760 | 26 | 250.7 | 227.5                  | 228.7 | 113 | 545 | 500                  | 775 | 750 | 1    | 534 | 149            | 4    |  |
| 1059.000       | 600                    | 595 | 552.2 | 509.5 | 525 | 560 | 400 | 800                     | 795 | 756   | 650 | 760 | 26 | 400.7 | 377.5                  | 378.7 | 185 | 545 | 500                  | 775 | 750 | 1    | 436 | 221            | 7    |  |
| 1060.000       | 600                    | 594 | 552.2 | 509.5 | 525 | 560 | 498 | 600                     | 594 | 556   | 450 | 560 | 18 | 210.2 | 187.5                  | 188.7 | 113 | 550 | 500                  | 575 | 550 | 2    | 534 | 149            | 4    |  |
| 1076.000       | 600                    | 595 | 552.2 | 509.5 | 525 | 560 | 498 | 760                     | 755 | 716   | 600 | 720 | 24 | 210.7 | 187.5                  | 188.7 | 113 | 550 | 500                  | 735 | 710 | 2    | 534 | 149            | 4    |  |
| 1090.000       | 600                    | 595 | 552.2 | 509.5 | 525 | 560 | 498 | 1000                    | 995 | 956   | 850 | 960 | 34 | 250.7 | 227.5                  | 228.7 | 113 | 545 | 500                  | 975 | 950 | 1    | 534 | 149            | 4    |  |
| 1091.000       | 600                    | 595 | 552.2 | 509.5 | 525 | 560 | 400 | 1000                    | 995 | 956   | 850 | 960 | 34 | 400.7 | 377.5                  | 378.7 | 185 | 545 | 500                  | 975 | 950 | 1    | 436 | 221            | 7    |  |
| 1338.000       | 380                    | 374 | 332.2 | 289.5 | 305 | 340 | 265 | 600                     | 594 | 556.5 | 450 | 560 | 18 | 350.2 | 327.5                  | 328.7 | 185 | 330 | 280                  | 575 | 550 | 2    | 301 | 221            | 5    |  |
| 1339.000       | 600                    | 594 | 552.2 | 509.5 | 525 | 560 | 400 | 380                     | 374 | 336   | 250 | 340 | 10 | 350.2 | 327.5                  | 328.7 | 185 | 550 | 500                  | 355 | 330 | 2    | 436 | 221            | 7    |  |
| 1350.000       | 500                    | 494 | 452.2 | 409.5 | 425 | 460 | 365 | 500                     | 494 | 456   | 350 | 460 | 14 | 300.2 | 277.5                  | 278.7 | 185 | 450 | 400                  | 475 | 450 | 2    | 401 | 221            | 6    |  |
| 1360.000       | 600                    | 594 | 552.2 | 509.5 | 525 | 560 | 400 | 600                     | 594 | 556   | 450 | 560 | 18 | 350.2 | 327.5                  | 328.7 | 185 | 550 | 500                  | 575 | 550 | 2    | 436 | 221            | 7    |  |
| 1376.000       | 600                    | 595 | 552.2 | 509.5 | 525 | 560 | 400 | 760                     | 755 | 716   | 600 | 720 | 24 | 350.7 | 327.5                  | 328.7 | 185 | 550 | 500                  | 735 | 710 | 2    | 436 | 221            | 7    |  |
| 1380.000       | 380                    | 374 | 332.7 | 289.5 | 305 | 340 | 303 | 380                     | 374 | 336.5 | 250 | 340 | 10 | 209.7 | 187.0                  | 189.0 | 113 | 330 | 280                  | 355 | 330 | 2    | 339 | 149            | 2    |  |