



GP series GP 12340



Valve Regulated Lead Acid Battery

Maintenance-Free Sealed Lead Acid Battery.

Absorbent Glass Mat (AGM) technology for efficient gas recombination of up to 99%.

Design for Standby Power Applications

【Design Life】

Up to 5 Years in Standby Service at 25°C

Eurobat (20°C) : 3-5 years, Standard Commercial

【Operating Temperature Range】

Nominal Operating Temperature : 25°C (77°F)

Discharge : -15°C ~ 50°C (5°F~122°F)

Charge: -15°C ~ 40°C (5°F~104°F)

Storage: -15°C ~ 40°C (5°F~104°F)

【Float Charging Voltage】

13.5 ~ 13.8 VDC/Unit at 25°C (77°F)

【Equalization Charging Voltage】

14.4 ~ 15.0 VDC/Unit at 25°C (77°F)

【Self Discharge】

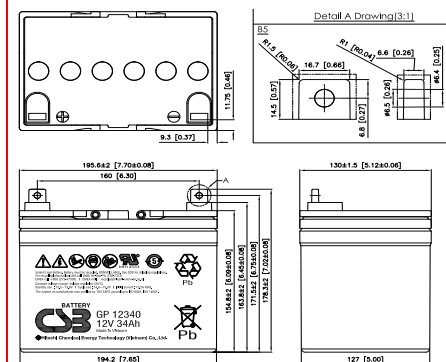
Less than 10% after 90 days, can be stored up to 6 months at 25°C (77°F);

Fully recharging is required before usage, and charged sooner if stored at higher temperature than 25°C (77°F).

Specification

Design according with IEC 61056-1/2: 2012

Nominal Voltage	12V (6 cells per unit)		
Nominal Capacity	34 Ah @20hr-rate to 1.75V per cell @25°C (77°F)		
Weight	Approx. 10.48 Kg (23.10 lbs)		
Maximum Discharge Current	380A (5sec)		
Internal Resistance	Approx. 9.5mΩ		
Short Circuit Current	915A		
Maximum Charge Current	10.20A		
Terminal types	B5 terminal to accept M6 bolt		
Terminal tightening torque	51.7±10.3 Kgf·cm / 44.9±9.0 Lbf·in / 5.10±1.0 N·m		
Container Material	ABS (UL 94-HB) & Flame Retardant (94-V0) available upon request		
Dimensions	Length (L)	195.6±2.0 mm	7.70±0.08 inch
	Width (W)	130.0±1.5 mm	5.12±0.08 inch
	Container Height (h)	154.8±2.0 mm	6.09±0.08 inch
	Overall Height (H)	178.3±2.0 mm	7.02±0.08 inch



Constant Current Discharge Characteristics Unit: A (25°C, 77°F)

F.V/Time	5 MIN	10MIN	15MIN	30MIN	60MIN	90MIN	2HR	3HR	5HR	8HR	10HR	20HR
1.60V	148	101	75.0	43.2	24.9	18.0	14.3	10.3	6.66	4.40	3.60	1.91
1.67V	134	95.5	72.8	42.6	24.7	17.9	14.2	10.2	6.62	4.37	3.58	1.90
1.70V	127	91.9	71.4	42.2	24.5	17.8	14.1	10.1	6.60	4.36	3.57	1.89
1.75V	112	84.2	67.9	41.1	24.1	17.6	14.0	10.0	6.54	4.33	3.55	1.88
1.80V	99.9	75.6	62.4	39.3	23.4	17.1	13.7	9.91	6.43	4.26	3.49	1.86
1.85V	84.3	68.4	55.5	36.8	22.1	16.3	13.1	9.52	6.18	4.10	3.36	1.79

Constant Power Discharge Characteristics Unit: W (25°C, 77°F)

F.V/Time	5MIN	10MIN	15MIN	30MIN	60MIN	90MIN	2HR	3HR	5HR	8HR	10HR	20HR
1.60V	1458	1057	822	517	302	217	172	123	79.4	52.6	43.1	23.0
1.67V	1339	1014	804	511	299	216	171	122	79.1	52.4	43.0	22.9
1.70V	1284	986	792	506	297	215	170	121	79.0	52.3	42.8	22.8
1.75V	1198	925	757	494	293	213	169	120	78.4	52.0	42.6	22.7
1.80V	1088	852	702	475	285	209	167	119	77.4	51.3	42.1	22.5
1.85V	950	786	639	448	268	199	161	115	74.8	49.7	40.8	21.8

Please refer to the official site for the latest rating confirmation. URL: www.csb-battery.com

Issued: 200213

Sales Offices

日立化成能源科技股份有限公司
Hitachi Chemical Energy Technology Co., Ltd.

BUSINESS HEADQUARTERS

Tel: +886-2-2880-5600

Fax: +886-2-2888-3300

USA OFFICE

Tel: +1-817-244-7777 / 1-(800)3-CSB-USA (272872)

Fax: +1-817-244-4445

SHENZHEN OFFICE (CHINA)

Tel: +86-755-8831-6488, 8831-6775

Fax: +86-755-8831-6075

EUROPE (EMEA) OFFICE

Tel: +31(0)180-418-140

Fax: +31(0)180-418-327

SHANGHAI OFFICE (CHINA)

Tel: +86-21-5046-1622, 5046-0833

Fax: +86-21-5046-1046

TAIPEI OFFICE

Tel: +886-2-2880-5600

Fax: +886-2-2888-3300

BEIJING OFFICE (CHINA)

Tel: +86-10-5820-5336, 5820-5338

Fax: +86-10-5820-3053

Recognized under UL 1989,
and certified by ISO 9001, 14001.

