

Accessories

Stainless Steel Sealing Rings

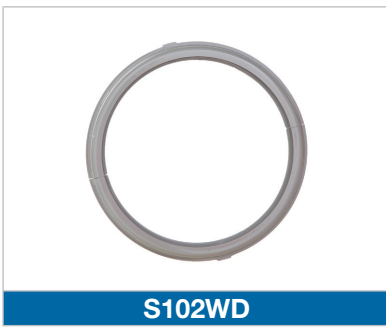
Cat. No.	Description
MSR-C2	Stainless steel sealing ring, tamper-proof
SM002A	Screw on type, tamper resistant



MSR-C2



SM002A



S102WD



MP01 / MP02

Polycarbonate Sealing Ring

Cat. No.	Description
S102WD	Ring, available with any meter socket

When ordering any meter socket, add suffix "Z" to meter socket cat. no. to exchange standard stainless steel ring for S102WD model.

Meter Protectors

Product Specifications

- Meter protector for use in problem areas (trailer parks, playgrounds, conservation areas)
- Steel construction (16 ga. galv. steel)
- Clear, unbreakable polycarbonate front cover, which allows full view of meter revenue reading and serial number
- Sealing and padlocking provision
- Grey painted

Cat. No.	Description
MP01	7-1/6 in. dia. x 4-3/4 in. deep for use with single phase residential meters
MP02	7-1/6 in. dia. x 8-3/4 in. deep for use with all meters, other than single phase residential meters

Accessories



BS087 / BS089 / BS090



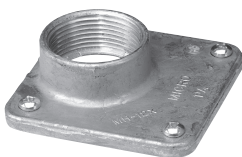
CM-BS100



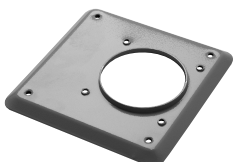
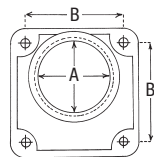
LS500



MH200



MH10X



BS052

Blank Meter Cover Plates

Cat. No.	Description
BS087	Grey ABS
BS089	Plastic "throw-away" cover
BS090	Clear unbreakable polycarbonate

Jumper Bar



Cat. No.	Description
CM-BS100	200 A Max.

Meter Jaw Safety Shroud

Cat. No.	Description
LS500	Red polycarbonate, 100/200 A

Mast Coupler



Cat. No.	Description
MH200	Fits all sockets with regular 2-1/2 in. hub opening

Masts Coupler



Cat. No.	PVC Cat. No.	A Hub Size (in.)	B
MH10X	—	1	For 2-1/2 in. regular hub opening (add hub adapter plate BS052 if used with units having 4 in. hub openings)
MH12X	PH12	1-1/4	
MH15	PH15	1-1/2	
MH20	PH20	2	
MH25	PH25	2-1/2	For 4 in. hub opening
MH30	—	3	
MH35	—	3-1/2	
MH40	—	4	

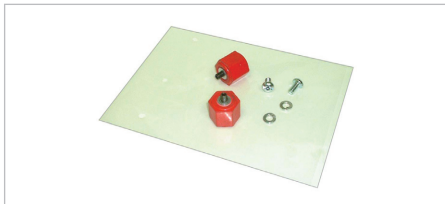
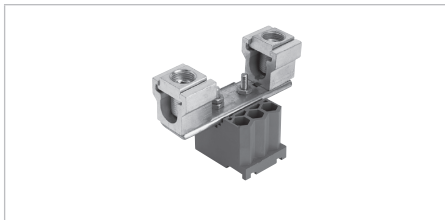
Supplied with 4 Robertson head screws.

Hub Adapter Plate



Cat. No.	Description
BS052	Permits use of regular size hubs on larger hub openings

Accessories



Consist of thermoplastic insulators with jaws and connectors assembled for replacement of one meter socket

Hub Opening Closure Plates



Cat. No.	Description
BS051	Inside attachment for regular hub opening (i.e.: 1 in. to 2-1/2 in.)
BS054	Inside attachment for larger hub opening (i.e.: 3 in. to 4 in.)

Insulated Neutral Kits



Cat. No.	Description
IN1000BA, IN1000BE, IN1000PL	100 A Max.
IN2000BS, IN2000PL	200 A Max.

Specify socket upon ordering.

Insulated Neutral Kit



Cat. No.	Description
IN4000JS	400 A Max. (JS4)

Ground Lug On Neutral Kit

Cat. No.	Description
GN2000	200 A Max. for BQ2, BS2 Series

Micro-ID-Kit

Cat. No.	Description	Markers Kit Includes	Qty.
MINI-ID-KIT	Plastic case	Stainless steel markers of each numbers 0 thru 9 (dash + service)	10
MICRO-ID-KIT	Blue metal carrying case	Stainless steel markers of each letters A thru D	10
		Stainless steel markers of each numbers 0 thru 9	
		Words "SERVICE"	4
		CM-BS100 Jumper Bar 200 A Max.	10
		LS500 Meter Jaw Safety Shroud	

Supplied with 4 Robertson head screws.

Identification Markers

Cat. No.	Description
No. 0 through No. 9	Clipped to the upper lip of the enclosure; provides permanent customer identification. Packed and sold in polyethylene bags of 10 identical markers except "SERVICE" which has 7 individual letters
No. A through No. Z	
No. SERVICE	



Replacement + Block Assemblies

Cat. No.	Description
BA3-X	Fits BA3 / BE1 Series
BS2-X-UNI	Fits BQ2 / BS2 Series uni block
M02-X-UNI	Fits M02 Series uni block
PL27-XEB	Fits PL27 Series uni block

Add suffix "B" to cat. no. above if mounting bridge is required

Accessories

Fifth Jaw Assemblies



Meter Socket Series	Standard capacity 9 o' position	Full capacity 9 o' position		Full capacity 6 o' position	
	C205	Z105*	Z205*	CM-B106*	B306*†
BA3	•	•			
BDC	•		•		•
BE1	•	•		•	
BE2	•	•			
BEC	•	•			
BD2	•		•		•
BQ2	•		•		•
BS2 / BS2L	•		•		•
BS4 / BSC4	•		•		•
CO1	•	•		•	
CO2	•		•		•
CO1 Multigang	•	•		•	

* CSA not applicable † For mono blocks only

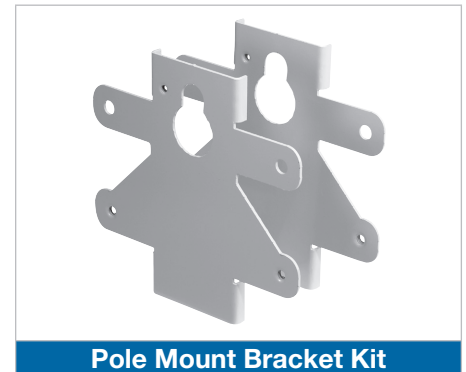


Fifth Jaw Assemblies

Pole Mount Bracket Kit

Cat. No.	Description	Conductor Range	Use w/Series	Option 1	Option 2
PMB200	Secures Microelectric meter socket to a wooden pole via Option 1 or 2	14-2 AWG	BA3, BE1, BQ2, BS, CL, CO1, CO2, CT, M02, PL17, PL27, VT	Use a lag bolt through 5/8 in. center keyhole	Use the two side bracket mounting holes (0.320 in. dia.) to wrap around the pole

Suitable for any Microelectric meter socket with mounting holes 5 in. apart. Attach meter socket using one or two bracket(s). PMB200 kit comes complete with 2 brackets, 1 ground connector. Includes assembly hardware.



Pole Mount Bracket Kit

Pole Mounting Kit

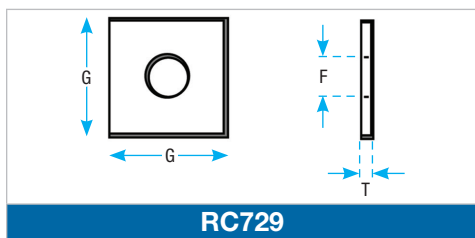
Cat. No.	Kit Includes	Qty.
PMBJS4	Support hangers	2
	1/2 in. x 4 in. lag bolt	1
	3/8 in. x 3 in. lag bolt	4
	5/16 in. x 1 in. carriage bolts, nuts and lock washers	



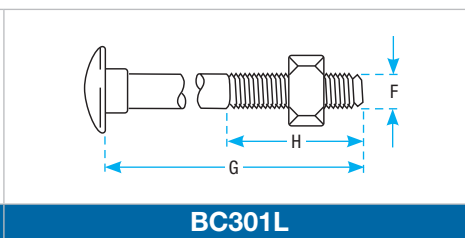
Pole Mounting Kit

Pole Line Hardware

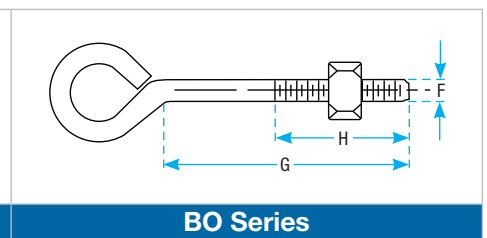
Cat. No.	Description	F Dia. (in.)	G Dia. (in.)	H Dia. (in.)	T Thick (in.)	Weight (100 pcs)		Std. Pkg.
						lb.	kg	
RC729	Square washer	5/8	2	-	3/16	22	10.0	400
BC301L	Carriage bolt	3/8	1-1/2	1-1/2	-	11	5.0	50
B0506	Oval eye bolt	5/8	6	3		122	55.4	
B0508			8	4		136	61.8	
B0510			10	4		150	68.1	
B0512			12	4		168	76.3	



RC729



BC301L



BO Series

Accessories



Meter Adaptor Bracket

Meter Adaptor Bracket

Cat. No.	Description
C03417M-1-FG	Adjustable Mounting Bracket for C02 Series meters to adapt to Siemens, SD and Cutler Hammer breakers



Flexible Braid Kit

Flexible Braid Kit

Cat. No.	Description
C02FB-KIT	Connection wires adaptor kit for C02 Series meter sockets for field installation. To be used with Cutler Hammer breakers



CIEFA-1/2 / CIEFA-4 CIEFSA-1/2 / CIEFSA-4

Service Entrance Heads

Cat. No.	Trade Size	KO Dimensions		
		Small	Large	Center
Service Entrance Heads (Cast Aluminum) Rigid Conduit				
CIEFA-1/2	1/2	0.312	—	—
CIEFA-3/4	3/4	0.375	0.400	
CIEFA-1	1	0.438	0.500	
CIEFA-1 1/4	1-1/4		0.625	
CIEFA-1 1/2	1-1/2	0.610	0.750	0.400
CIEFA-2	2	0.750	1.000	0.525
CIEFA-2 1/2	2-1/2	0.875	1.300	1.000
CIEFA-3	3	1.125	1.750	1.125
CIEFA-3 1/2	3-1/2			
CIEFA-4	4			
Service Entrance Heads (Cast Aluminum) E.M.T.				
CIEFSA-1/2	1/2			
CIEFSA-3/4	3/4			
CIEFSA-1	1			
CIEFSA-1 1/4	1-1/4			
CIEFSA-1 1/2	1-1/2			
CIEFSA-2	2			
CIEFSA-2 1/2	2-1/2			
CIEFSA-3	3			
CIEFSA-3 1/2	3-1/2			
CIEFSA-4	4			

KO Configuration

